

# COM Port Connectivity Kit

P/N: **OBK-S-CN1**

P/N: **OBK-S-CS1**

## Overview

The Outback-S COM Port Connectivity Kit provides expansion capability to the base guidance system. The DGPS signals of the Outback-S can be shared with 3rd party mobile applications such as Farm Works®, Ag Leader, AGCO FieldStar, and MicroTrak Grain Trak. Any application designed to receive DGPS signals from an external receiver over an RS232 Serial Interface using either NMEA 0183 or RTCM messages will work with the Outback-S Guidance System.

### Default Configuration and Supported Options

Baud Rate	4800	9600	19200
NMEA Messages			
GGA	OFF	1 Hz	5 Hz
GLL	OFF	1 Hz	5 Hz
VTG	OFF	1 Hz	5 Hz
GSV	OFF	1 Hz	
RMC	OFF	1 Hz	5 Hz
GSA	OFF	1 Hz	
ZDA	OFF	1 Hz	5 Hz
GST	OFF	1 Hz	
RTCM Message	OFF	ON	

Serial Data Format: Data Bits=8, Stop Bits=1, Parity=None, Flow Control=None

## Kit Contents

There are two connectivity kits available. OBK-S-CS1 contains a 6ft serial extension cable. OBK-S-CN1 contains a 10ft serial crossover cable (often referred to as a null modem cable) a gender changer and installation instructions. Configuration of the proper Outback-S NMEA messages is supported directly on the Outback-S console with application version 2.0 and above.

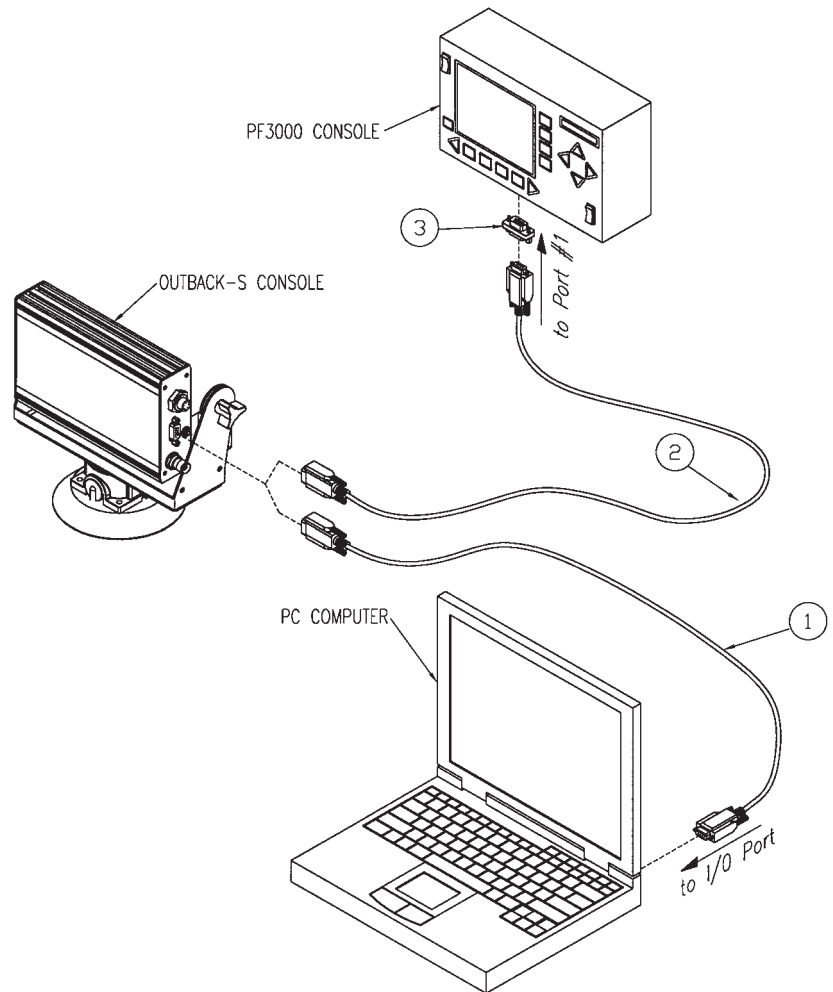
## Cable Connections

For PC-based applications, use the 6ft serial extension cable included in OBK-S-CS1 between the Outback-S COM port and the PC I/O serial port. For the Ag Leader, FieldStar, and GrainTrak applications, use the 10ft serial crossover cable together with the gender changer included in OBK-S-CN1 between the Outback-S COM port and the monitor console.

For other applications, refer to their installation manual for specific cabling guidelines. An array of connecting cables and kits are available for specific applications. Contact your local Outback Guidance Center™ to determine the appropriate cable for your needs.

## Default Communication Protocol

For successful communication, both the Outback-S console and the external application must be configured in the same way. Applications like Farm Works® and the Ag Leader use the default Outback-S communication protocol. Other applications will require alteration from the default settings.



REF.	P/N	DESCRIPTION	QTY.
1	CS1	Cable, 9-pin Extension - DB9MF, 6ft Lg.	1
2	CN1	Cable, 9-pin Crossover - DB9MF, 10ft Lg.	1
3	CN1	Connector, 9-pin Gender Changer - DB9MM	1



## Outback-S COM Port Connectivity - Application Guide

Mapping Application	Cable Connection	Communication Protocol
Deere Green Star - Older Series	Order OBK-S-GS1 Cable Kit	Baud= <b>4800</b> NMEA= <b>GGA,RMC,GSA @ 1Hz</b>
Deere Green Star - 50 Series	Order OBK-S-GS2 Cable Kit	Baud= <b>4800</b> NMEA= <b>GGA,RMC,GSA @ 1Hz</b>
CasIH AFS & AFS+	Order OBK-S-AS1 Cable Kit	Baud= <b>4800</b> NMEA= <b>GGA,VTG,RMC,GSA @ 1Hz</b>
<b>OBK-S-CN1</b>		
AGCO FieldStar	10ft Null Modem Cable plus Gender Changer	Baud= <b>4800</b> NMEA= <b>GGA,VTG,GSA @ 1Hz</b>
MicroTrak Grain Trak	10ft Null Modem Cable plus Gender Changer	Baud= <b>4800</b> NMEA= <b>GGA,VTC,GSA,ZDA @ 1Hz</b>
Ag Leader YM2000/PF3000/Insight	10ft Null Modem Cable plus Gender Changer	Baud= <b>4800</b> NMEA= <b>GGA,VTG @ 1Hz</b>
New Holland Yield Monitor (Ag Leader PF 3000)	10ft Null Modem Cable plus Gender Changer	Baud= <b>4800</b> NMEA= <b>GGA,VTG @ 1Hz</b>
<b>OBK-S-CS1</b>		
Ag Leader PF 3000 Pro/PF Advantage	6ft Serial Cable & Ag Leader P.N. 2000990	Baud= <b>4800</b> NMEA= <b>GGA,VTG @ 1Hz</b>
Farm works / PC-based / Outback S Software	6ft Serial Cable	Baud= <b>4800</b> NMEA= <b>GGA,VTG @ 1Hz</b>
RDS 8000 Yield Monitor	6ft Serial Cable	Baud= <b>4800</b> NMEA= <b>GGA,VTG @ 1Hz</b>
Catepillar Cebris Yield Monitor	6ft Serial Cable	Baud= <b>4800 or 9600</b> NMEA= <b>GGA @ 1Hz</b>
AG CHEM Falcon	6ft Serial Cable	Baud= <b>4800</b> NMEA= <b>GGA,VTC @ 1Hz</b>
AG CHEM Falcon w/ Falcon Track	6ft Serial Cable	Baud= <b>19200</b> NMEA= <b>GGA,VTG @ 1Hz</b>



P.O. Box 394 • 2005 West Oregon Street  
Hiawatha, Kansas 66434 USA  
Phone (785) 742-2949 • FAX (785) 742-7174  
Call Toll Free 1-800-247-3808  
[www.outbackguidance.com](http://www.outbackguidance.com)