

Automated Steering Hydraulic Installation Kit

P/N: ED-SPX4260

Fits Case IH Sprayer Model:
SPX4260 (-2001)



Overview

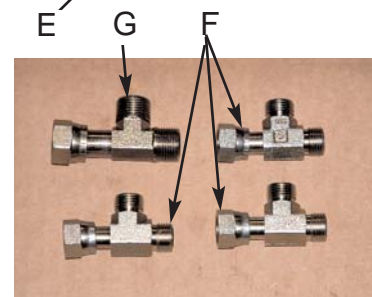
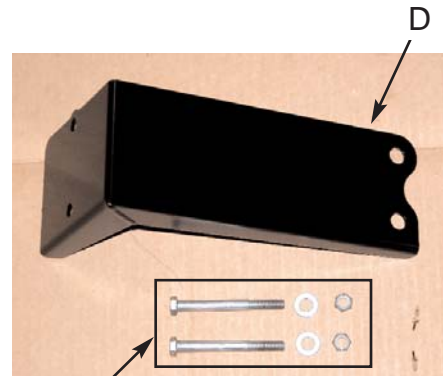
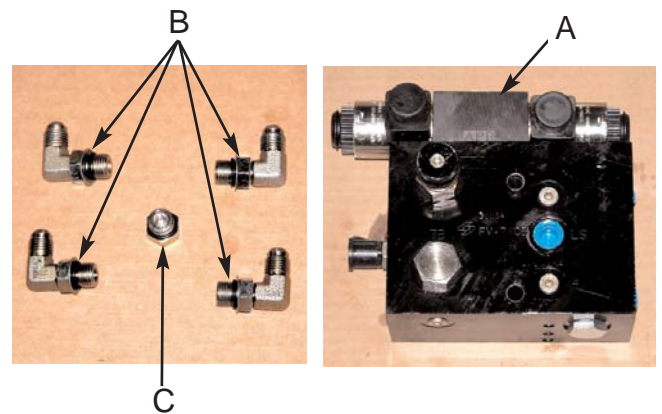
A series of equipment specific hydraulic installation kits have been developed to work in conjunction with your automated steering system. This kit contains the necessary components and instructions to install automated steering hydraulics on the SPX4260 sprayers ending with the 2001 model year, service model #778B and prior. Please read this manual thoroughly before beginning the installation.

Machine Preparation

Before attempting to install hydraulics, park the machine on a clean level floor with adequate clearance to work all around.

Kit Contents

Unpack the installation kit and identify the required parts as shown.



REF	P/N	QTY	DESCRIPTION
A	760-0003	1	Assy, Hyd. Valve Block - LS
Bag #1 of 3 includes B & C			
B	760-2058	4	Adapter, Hyd. 90 Elbow - #6maleJIC x #6maleORB
C	760-2045	1	Adapter, Hyd. Plug - #6maleORB
D	640-0019	1	Hyd. Block Mnt, SPX4260
Bag #2 of 3 includes E			
E	675-2005	2	Bolt, 3/8NC x 3-1/4 Gr5 ZP
	678-1054	2	Washer, Narrow Flat - 3/4"OD x 13/32"ID x 1/16"thk ZP
	676-1035	2	Nut, NyLock - 3/8NC ZP
Bag #3 of 3 includes F & G			
F	760-2046	3	Adapter, Hyd Run Tee - #6 ORFF
G	760-2069	1	Adapter, Hyd Run Tee - #8 ORFF

Kit Contents (cont.)

REF	P/N	QTY	DESCRIPTION
H	760-1056	2	Hose, Hyd. - 1/4" x 22", #6femJICswiv x #6femORFFswiv 90EL
I	760-1057	1	Hose, Hyd. - 3/8" x 15", #6femJICswiv x #6femORFFswiv 90EL
J	760-1058	1	Hose, Hyd. - 3/8" x 18", #6femJICswiv x #8femORFFswiv 90EL
K	051-0143	1	Cable, Interface - 15 ft.
	677-2001	20	Tie Strap, 11" Heavy Duty, Not Shown
	710-0053	1	Kit, Steering Wheel Switch, Not Shown



WARNING: **HIGH-PRESSURE FLUID HAZARD.** Hydraulic oil may be hot and under high pressure. To prevent serious injury or death: Relieve system pressure and allow to cool before repairing or disconnecting. Wear proper hand and eye protection when searching for leaks, using wood or cardboard instead of hands. Keep all hydraulic components in good repair.

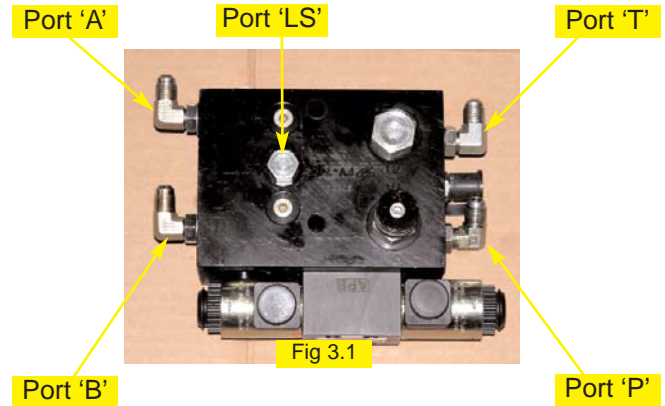
IMPORTANT: **PREVENT HYDRAULIC SYSTEM CONTAMINATION.** It is essential to thoroughly clean hydraulic system fittings and hose connections prior to disconnecting or removing. Use a spray cleaner such as 'Brake Clean' to prevent hydraulic system contamination. Note that o-rings used on ORB and ORFF type fittings may be damaged by solvent cleaners such as 'Brake Clean'. If a fitting is to be cleaned internally, the o-ring should first be removed and cleaned with a fiberless cloth.

INSTALLATION

1. Prepare Hydraulic Control Block:

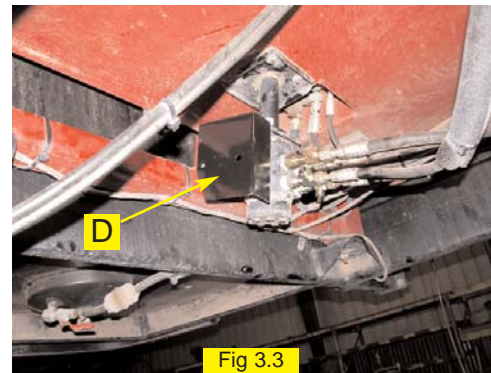
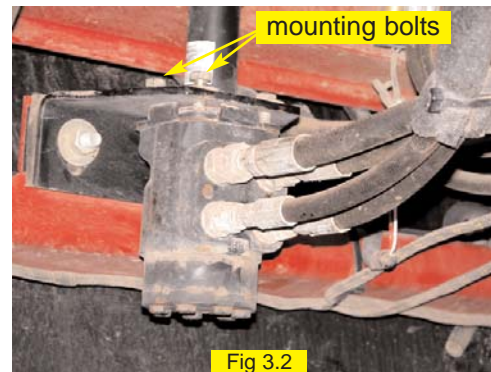
Make sure the hydraulic control block is clean and dust free. Remove the plastic plugs and install elbow adapters (**B**) in the **P**, **T**, **A**, and **B** ports. Install the ORB plug fitting (**C**) in the **LS** port. (Figure 3.1)

*Note: To install the elbow fittings into the **P** and **T** ports, the pressure test port fitting must first be removed. Once the elbows are installed, reinstall the pressure test port fitting.*



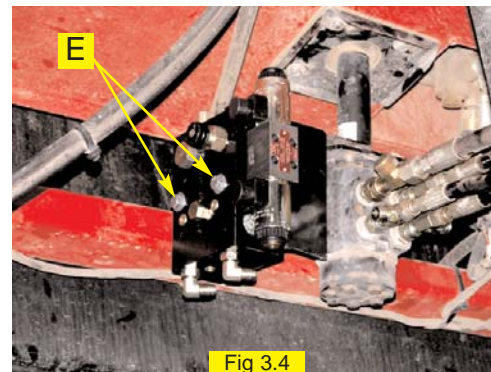
2. Install Mounting Bracket:

Locate the steering orbital under the cab. Remove the two mounting bolts from the top of the orbital. (Figure 3.2) Install the mounting bracket (**D**) onto the top of the orbital using the two existing bolts as shown. (Figure 3.3)



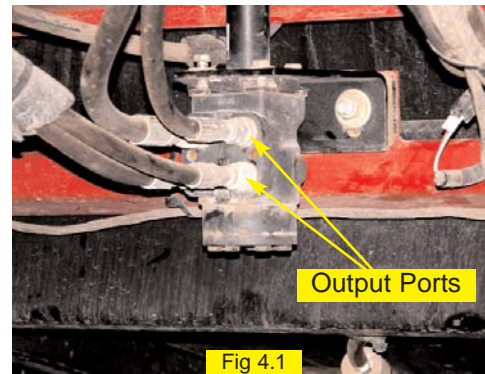
3. Install Hydraulic Control Block:

Install the hydraulic control block, as prepared in step 1, to the mounting bracket as shown using the mounting hardware in group (**E**). (Figure 3.4) Tighten mounting bolts securely.

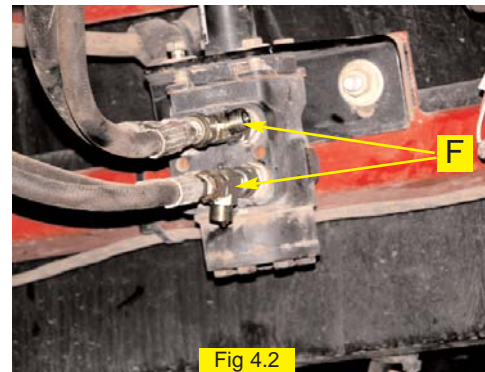


4. Install Steering Output Fittings:

Locate the steering output ports on the right side of the steering orbital under the cab. (Figure 4.1) The output ports will be stamped **R** and **L** on the orbital casting.



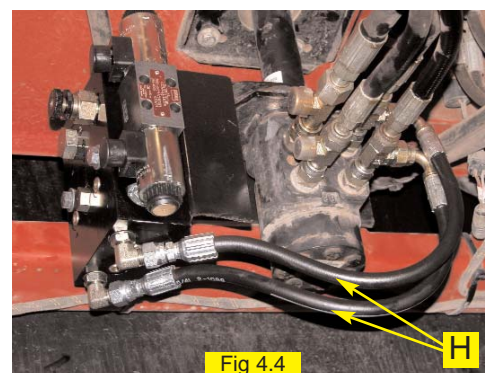
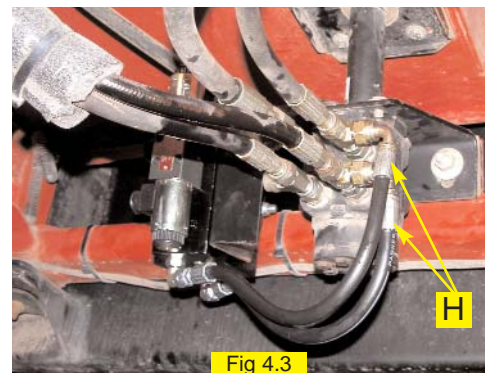
Install run-tee fittings (**F**) at the output ports of the orbital. (Figure 4.2) Reattach the machine steering lines to the ends of the run-tee fittings as shown. Leave the run-tee fittings loose to allow for alignment when attaching hoses. Plastic caps placed on the open branches of the run-tee fittings will prevent excessive leakage prior to hose installation.



5. Install Steering Output Hoses:

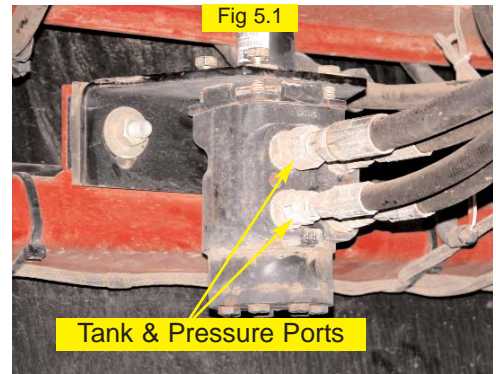
Install steering output hoses (**H**) on to the run-tee fittings installed in the previous step and to the **A** and **B** ports of the hydraulic control block. (Figure 4.3) The ends of the hoses with the o-ring face elbows attach at the run-tee fittings. (Figure 4.4)

Carefully check the hose routing for clearance of moving parts and secure with heavy tie straps (included). Securely tighten all steering output hoses and fittings, both at the run-tees and at the hydraulic control block.

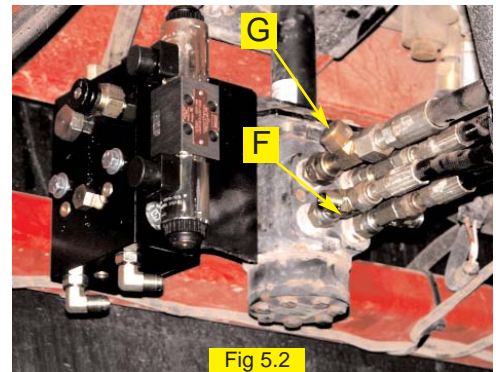


6. Install Pressure and Tank Fittings:

Locate the pressure and tank ports on the left side of the steering orbital under the cab. (Figure 5.1) The pressure and tank ports will be stamped **P** and **T** on the orbital casting.

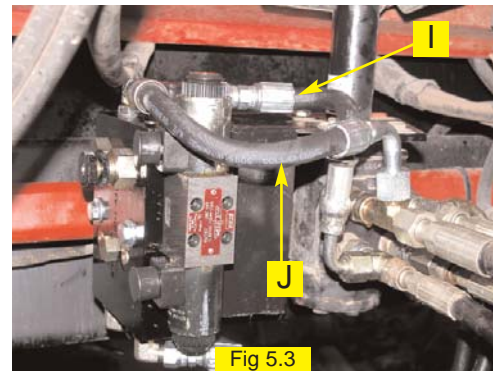


Install the provided run-tee fitting (**F**) at the **P** port of the orbital. Install the provided run-tee fitting (**G**) at the **T** port of the orbital. (Figure 5.2) Reattach the machine pressure and tank hoses to the respective ends of the run-tee fittings as shown. Leave the run-tee fittings loose to allow for alignment when attaching hoses. Plastic caps placed on the open branches of the run-tee fittings will prevent excessive leakage prior to hose installation.



7. Install Pressure and Tank Hoses:

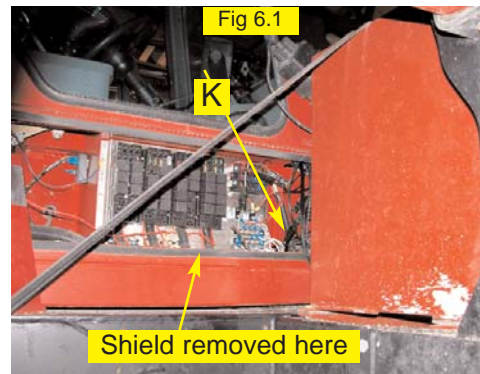
Install the provided pressure hose (**I**) between the run-tee fitting installed at the **P** port of the steering orbital and the **P** port of the hydraulic control block. Install the provided tank hose (**J**) between the run-tee fitting installed at the **T** port of the steering orbital and the **T** port of the hydraulic control block. (Figure 5.3) The ends of the hoses with the o-ring face elbows attach at the run-tee fittings.



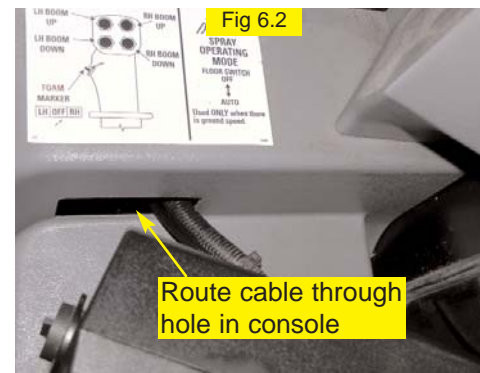
Carefully check the hose routing for clearance of moving parts and secure with heavy tie straps (*included*). Securely tighten all hoses and fittings, both at the run-tees and at the hydraulic control block.

8. Install the Valve Control Cable:

Remove the shield on the right side of the cab. (Figure 6.1)

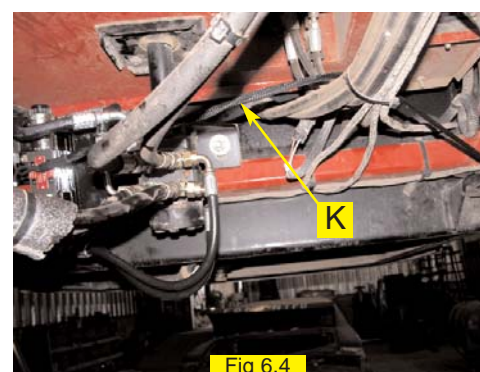
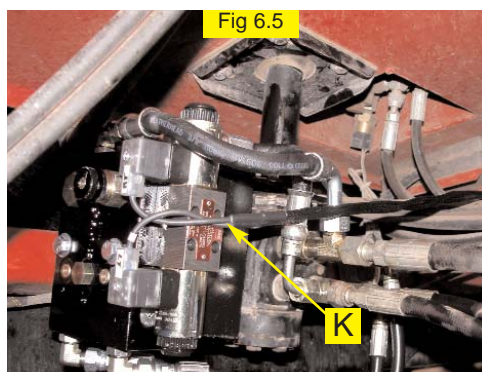
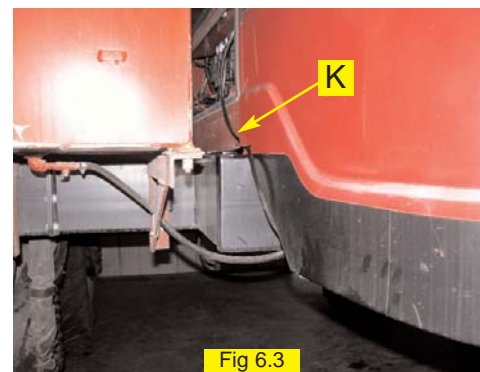


Route the valve control cable (K) through the dash. (Figure 6.2)



Route the DIN connectors down and across to the hydraulic block and attach as shown. (Figure 6.3, 6.4, and 6.5)

Remove enough slack out of the cable to prevent entanglement with machine moving parts. (Figure 6.5) Use tie straps as needed.



9. Verify Operation and Set Steering Control Rate:

Cleanup the installation area around the sprayer and make certain that it is safe to operate. Start the machine and check hydraulic connections for any leaks. Rotate the steering wheel from one extreme to the other, and back.

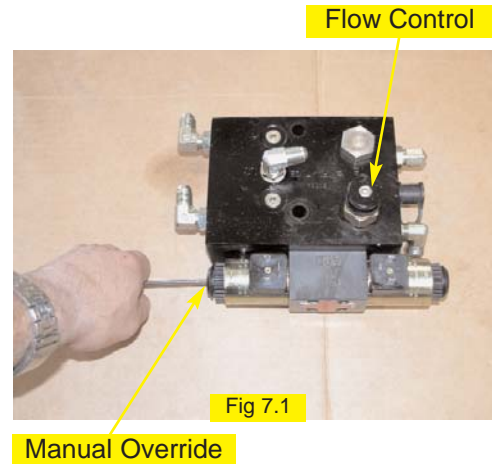
Adjust the hydraulic oil flow control knob to a starting position of **3 turns** from completely closed. To adjust the knob, lift and turn clockwise to reduce flow, counter-clockwise to increase flow.

The coils on the control block have manual push button overrides. Push either manual override to move the steering tires all the way to one extreme. Count the number of seconds for the steering tires to move all the way in the opposite direction while pressing the manual override of the other coil. (Figure 7.1)

Adjust the hydraulic oil flow control knob to achieve an end to end steering cycle time of approximately **12** seconds.

11. Complete Electronic Installation and Setup:

Refer to the owner's manual supplied with your automated steering system to complete the electronic installation and setup.



Note: To activate the manual overrides, a tool such as a small screw driver or allen wrench must be inserted into the end of the coil to depress the override button.



WARNING:

PINCH POINT HAZARD. To prevent serious injury or death, avoid unsafe practices while manually operating hydraulic steering circuit. Keep others away and stay clear of mechanical steering linkages.

