


Section/Rate Control Kit Installation Guide

Kit: SECT RATE CTRL Willmar 8500
P/N 911-0007-000

Fits Willmar 8100 and 8500 Sprayers:

Read and Follow Safety Messages

- In these instructions, you may see the heading WARNING and the safety alert symbol . They indicate a hazardous situation that, if not avoided, could result in death or serious injury. The safety messages provide information to identify a hazard associated with potential injury.
- Before installing, operating, or performing maintenance or service on any part of the system, read and understand this installation guide.
- Do not allow anyone to operate without instruction.
- Keep these instructions and all related safety information with the manuals for your machine and other implements.



If you have questions or need assistance, contact your local dealer or distributor.



Overview

A series of equipment-specific kits has been developed to enable the AC110 section/rate controller to interface with your product rate controller. This kit contains the components and instructions to connect an AC110 with a Willmar 8100 or 8500 sprayer.

Please read this manual thoroughly before beginning the installation.

Kit Contents

Unpack this kit and identify the required parts as shown. Kit items are referenced A, B, C etc. and those references are used in the installation steps and pictures.

REF	PART NUMBER	QTY	DESCRIPTION	PHOTOGRAPH
A	054-0160-000#	1	Interface cable	
B	750-5006-000#	1	Section/rate controller (AC110)	

Kit Contents (continued)

REF	PART NUMBER	QTY	DESCRIPTION	PHOTOGRAPH
C	054-0144-000#	1	Power cable	
D	054-0185-000#	1	Power switch cable	
E	051-0067-005#	1	Input/output splitter ('Y') cable	
F	051-0288-000#	1	CAN loop back connector (terminator)	
G	677-2001	20	Tie strap, 11" heavy duty	

Connections and Installation

1. Standard AC110 connections.

NOTE:

The text and figures in this section detail the connections that you will need to make. Exactly when you make the connections depends on individual installations and your working preferences. See “Appendix - AC110 Cables and Connections”, page 5.

- a. Install the loop back connector (terminator) **F** in the appropriate connector on interface cable **A** then connect **A** (main plug and power connectors) to AC110 **B**, red to + positive, black to - negative (Figure 1a). Do not refit terminal nuts yet.

Connect the non-fused end of power cable **C** to AC110 **B**. Refit the terminal nuts and tighten the power connections (Figure 1a).

- b. Using the splitter (‘Y’) cable **E** (but see note following), tie into the existing CAN connection. For example, connect **E** between the 7-pin CAN connector labeled “ECU” on the Outback MAX cable (with the white main connector) and the 7-pin CAN connector on interface cable **A** (Figure 1b).

NOTE:

You can use splitter cable **E** as an extension cable between interface cable **A** and the CAN connection “ECU” on the (white connector) Outback MAX cable. You can also use cable **E** to connect the switchbox if installed (Figure 1b).

- c. Connect power switch cable **D** to the 4-pin connector on interface cable **A** (Figure 1c).

2. Installing the interface cable.

- a. Remove the rearmost of the two compartment covers on the cab floor to the right of the driver’s seat (Figure 2a).

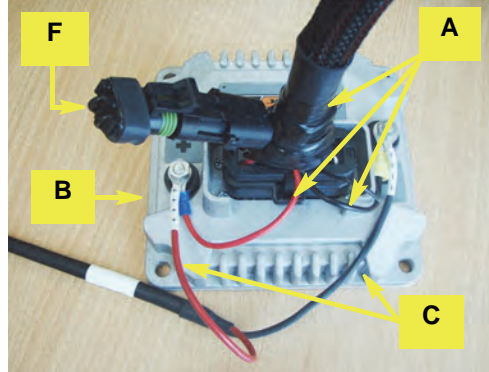


Figure 1a: Connections at AC110

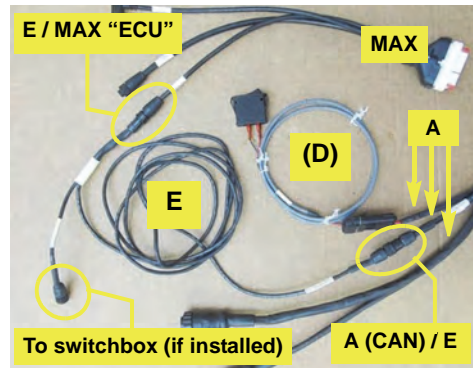


Figure 1b: Splitter cable connections

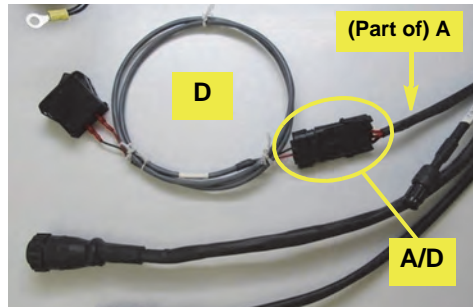


Figure 1c: Connecting the power switch cable



Figure 2a: Boom switch connectors location

2. **Installing the interface cable (continued).**

- b. Locate the machine's 14-pin cab harness cable connection to the boom switch bulkhead connector in the cabling compartment. Disconnect the harness cable from the bulkhead connector (Figure 2b left and right images).

NOTE:

The interface cable shown in Figure 2c is conduit protected. Your interface cable has braided sheath protection.

- c. Connect the two branch cables of interface cable **A** to the machine's corresponding cab harness and bulkhead connector (Figure 2c).

NOTE:

*If your AC110 connections are not yet complete, refer to 1. **Standard AC110 connections** on page 3.*

- d. Connect the fused end of power cable **C** to the machine's battery.
- e. Secure all cabling with tie straps **G**.

© AgJunction Inc. (2014). All rights reserved.

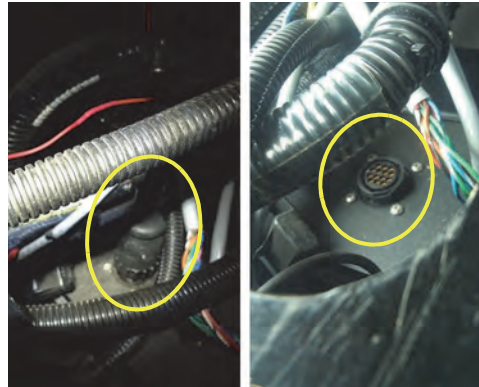


Figure 2b: Boom switch connection - before and after disconnection

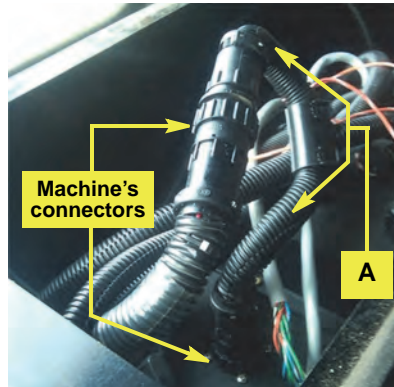


Figure 2c: Interface cable installed

Appendix - AC110 Cables and Connections

