

Hemisphere
GPS



Outback BaseLineX

User Guide

Part No. 875-0220-000



This device complies with part 15 of the FCC Rules. Operation is subject to the following two conditions:

- (1) This device may not cause harmful interference, and
- (2) this device must accept any interference received, including interference that may cause undesired operation.

Copyright Notice

Hemisphere GPS Precision GPS Applications

Copyright © Hemisphere GPS (2009). All rights reserved.

No part of this manual may be reproduced, transmitted, transcribed, stored in a retrieval system or translated into any language or computer language, in any form or by any means, electronic, mechanical, magnetic, optical, chemical, manual or otherwise, without the prior written permission of Hemisphere GPS.

Trademarks

HEMISPHERE GPS®, the Hemisphere GPS logo, CRESCENT®, ECLIPSE™, COAST™, e-DIF®, OUTBACK™, OUTBACK Guidance®, OUTBACK Guidance Center™, OUTBACK S™, OUTBACK S-Lite™, OUTBACK S2™, OUTBACK 360™. OUTBACK Steering Guide™, OUTBACK Hitch™, SATLOC®, the Satloc logo, eDrive®, eDriveTC™, Just Let Go™, L-Dif™, BaseLineHD™, AerialAce™, AirStar™, AirTrac™, GPSteer™, LiteStar II™, PocketMax™, PocketMax PC™, Satloc M3™, MapStar®, IntelliFlow®, Beeline® and Vector™ are proprietary trademarks of Hemisphere GPS. Other trademarks are the properties of their respective owners.

Patents

The OUTBACK S™ and S-Lite™ automated navigation and steering guide system is covered by U.S. Patents No. 6,539,303 and No. 6,711,501. The OUTBACK Hitch™ automated hitch control system is covered by U.S. Patent No. 6,631,916. The OUTBACK eDriveTC GPS assisted steering system is covered by U.S. Patent No. 7,142,956. Hemisphere GPS products may be covered by one or more of the following U.S. Patents:

6,111,549	6,397,147	6,469,663	6,501,346	6,539,303
6,549,091	6,631,916	6,711,501	6,744,404	6,865,465
6,876,920	7,142,956	7,162,348	7,277,792	7,292,185
7,292,186	7,373,231	7,400,956	7,400,294	7,388,539
7,429,952	7,437,230	7,460,942		

Other U.S. and foreign patents pending.

Notice to Customers

Contact your local dealer for technical assistance. To find the authorized dealer near you, call or write us at:

Hemisphere GPS
2207 Iowa Street
Hiawatha, KS 66434
USA

Telephone number: (800) 247-3808
Fax number: (785) 742-4584
E-mail address: info@hemispheregps.com
www.hemispheregps.com

Warranty Notice

Covered Products

This warranty covers all products manufactured by Hemisphere GPS (the "Products").

Hemisphere GPS Limited Warranty

Hemisphere GPS hereby warrants solely to the end purchaser of the Products, subject to the exclusions and procedures set forth herein below, that the Products sold to such end purchaser shall be free, under normal use and maintenance, from defects in material and workmanship for a period of 12 months from delivery to such end purchaser. Repairs and replacement components are warranted, subject to the exclusions and procedures set forth below, to be free, under normal use and maintenance, from defects in material and workmanship for 90 days from performance or delivery, or for the balance of the original warranty period, whichever is greater.

Purchaser's Exclusive Remedy

The end purchaser's exclusive remedy under this warranty shall be limited to the repair or replacement, at the option of Hemisphere GPS, of any defective Products or components thereof. The end user shall notify Hemisphere GPS or a Hemisphere GPS approved service center immediately of any claimed defect. Repairs shall be made through a Hemisphere GPS approved service center only.

Exclusions

Hemisphere GPS does not warrant damage occurring in transit or due to misuse, abuse, improper installation, neglect, lightning (or other electrical discharge) or fresh/salt water immersion of Products. Repair, modification or service of Hemisphere GPS products by any party other than a Hemisphere GPS approved service center shall render this warranty null and void. Hemisphere GPS does not warrant claims asserted after the end of the warranty period. Hemisphere GPS does not warrant or guarantee the precision or accuracy of positions obtained when using Products. Products are not intended for primary navigation or for use in safety of life applications. The potential accuracy of Products as stated in Hemisphere GPS literature and/or Product specifications serves to provide only an estimate of achievable accuracy based on:

- Specifications provided by the US Department of Defense for GPS Positioning,
- DGPS service provider performance specifications.

Hemisphere GPS reserves the right to modify Products without any obligation to notify, supply or install any improvements or alterations to existing Products.

No Other Warranties

The foregoing warranty is exclusive of all other warranties, whether written, oral, implied or arising by statute, course of dealing or trade usage, in connection with the design, sale, installation, service or use of any products or any components thereof, including, but not limited to, any warranty of merchant ability or fitness for a particular purpose.

Limitation of Liability

The extent of Hemisphere GPS' liability for damages of any nature to the end purchaser or any other person or entity whether in contract or tort and whether to persons or property shall in no case exceed, the aggregate, the cost of correcting the defective item. In no event will Hemisphere GPS be liable for any loss of profits, loss of use or for any special, indirect, incidental, consequential or contingent damages, even if Hemisphere GPS has been advised of the possibility of such damages. Without limiting the foregoing, Hemisphere GPS shall not be liable for any damages of any kind resulting from installation, use, quality, performance or accuracy of any products.

Governing Legislation

To the greatest extent possible, this warranty shall be governed by the laws of the State of Arizona. In the event that any provision hereof is held to be invalid by a court of competent jurisdiction, such provision shall be severed from this warranty and the remaining provisions shall remain in full force and effect.

Obtaining Warranty Service

In order to obtain warranty service, the end purchaser must bring the Product to a Hemisphere GPS approved service center along with the end purchaser's proof of purchase. For any questions regarding warranty service or to obtain information regarding the location of any of Hemisphere GPS' approved service centers, contact Hemisphere GPS at the following address:

Hemisphere GPS

8444 N. 90th Street, Suite 130

Scottsdale, AZ 85258

Phone: 480-348-9919 Fax: 480-348-6370

techsupport@hemispheregps.com

www.hemispheregps.com

Documentation Feedback

Hemisphere GPS is committed to the quality and continuous improvement of our products and services. We urge you to provide Hemisphere GPS with any feedback regarding this guide by writing to the following email address:

DocFeedback@hemispheregps.com

Table of Contents

Chapter 1: Overview	1
Product Overview	2
What Is Included	3
Parts List	4
Chapter 2: Installation	7
Product Overview	8
Setup	9
Base station	9
Powering the Base Station	12
Base Station Port Information	14
LED information	15
Battery Use and Charging	20
Chapter 3: CLM & Base/Radio Configuration	25
Introduction	26
Base Station Position	27
Using Crescent Link Manager	28



Base Configuration	29
Using Crescent Link Manager	29
Saving a coordinates list	37
Opening a coordinates list	37
Deleting Points in Coordinates List	38
Changing Radio Configuration	39
Base Station Maxstream Radio	39
Rover Maxstream Radio Configuration	42
Base Station Microhard Radio	45
Rover Microhard Radio Configuration	48
Base Station Satel Radio Configuration	51
Satel Rover Radio Configuration	54
Appendix	61
Frequently Asked Questions	62
Sales and Service Information	65
Contacting the Factory	65
Extended Service Plan (ESP) Summary	67
HEMISPHERE GPS END USER LICENSE AGREEMENT ..	71





1: Overview

Product Overview

What Is Included

Parts List

Product Overview

Congratulations on the purchase of an Outback BaseLineX™. BaseLineX is a Real-Time Kinematic (RTK) GPS system that uses a base station (stationary) to broadcast corrections over a wireless link to a rover radio (mobile) or multiple rover radios. The localized corrections from the rover radio are processed in the rover GPS system to achieve accuracy and repeatability that is not possible with WAAS, beacon, e-Dif™ or most other differential methods. BaseLineX's main advantage is that it allows precision work to be done with one highly-portable base station and several rover radios.



What Is Included

BaseLineX uses a base station and rover radio. The base station is the stationary unit in the field. The rover radio is attached to the GPS system in the vehicle.

The following equipment is included with the BaseLineX system:

- Base station (DGPS receiver, radio transmitter, battery, GPS antenna, radio antenna/bracket and cable)
- Tripod
- External power cables
- Battery charger
- Rover radio (radio antenna, radio receiver, power/communication cable)



Figure 1-1. Outback BaseLineX and equipment



Parts List

Table 1-1: BaseLineX Cables

Part Number	Description
050-0011-022#	Serial cable data cable, 3 m (9.84 ft)
051-0126-003#	S2/S3 radio data/power cable
054-0085-001	Power cable
054-0086-001	Power cable battery clips
054-0095-000#	AC power cable (U.S)

Table 1-2: BaseLineX Parts

Part Number	Description
150-0010-000	Antenna, 900 Mhz
427-0032-000#	Battery charger
750-0050-000	BaseLineX tripod
802-1044-000 <i>OR</i>	BaseLineX base station, 900 MHz (for N. America)
802-1054-000 <i>OR</i>	BaseLineX base station, 900 MHz, Max (for Australia)
802-1051-000	BaseLineX base station, 450 MHz, (for Europe)
802-1045-000 <i>OR</i>	BaseLineX rover radio, 900 MHz (for N. America),
802-1055-000 <i>OR</i>	BaseLineX rover radio, 900 MHz, Max (for Australia)
802-1052-000	BaseLineX rover radio, 450 MHz, (for Europe)



Table 1-3: BaseLineX Documentation and Software

Part Number	Description
875-0221-000	BaseLineX quick reference guide
875-0220-000	BaseLineX user guide
878-0011-000	CD, Software, BaseLineX



1: Overview





2: Installation

Product Overview

Setup

Powering the Base Station

Base Station Port Information

LED Information

Battery Use and Charging

Product Overview

This chapter provides the following:

- Setup
- Powering the base station
- Base station port information
- LED information
- Battery life and charging



Setup

Base station

To set up the base station:

1. Attach the base station to the tripod using the 5/8-inch thread port on the bottom of the base station enclosure.



Figure 2-1. Base station on tripod

2. Place the base station at the edge of the field with no obstructions between the rover radio and base station. (See Figure 2-1 above and Figure 2-2, on page 10.)



Note: Do not place the base station near metal objects.



Note: Make sure the unit is at least 50 meters (160 feet) from obstructions to provide a clear view of the sky to the GPS antenna. (See Figure 2-2, on page 10.)



2: Installation

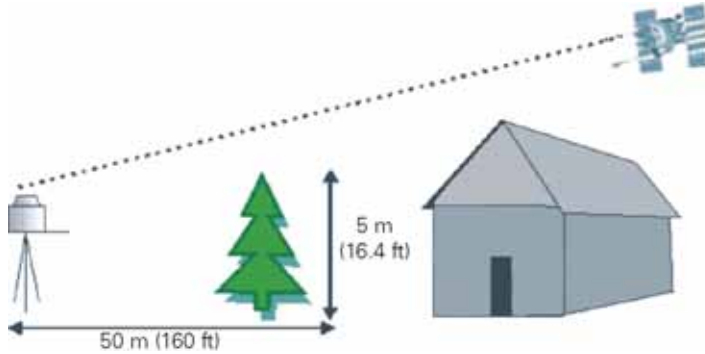


Figure 2-2. Location of base station



Note: Make sure the base station and rover radio have a “clear line of sight” up to 5 kilometers (3 miles) or less when operating the BaseLineHD. (See Figure 2-3.)



Figure 2-3. Base station and tractor distance



3. Attach the radio antenna bracket and antenna to the base station. (see Figure 2-4)



Figure 2-4. Antenna cable bracket attached

4. Connect the radio antenna cable to the radio antenna port. (See Figure 2-5)

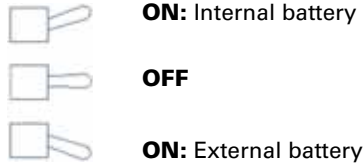


Figure 2-5. Antenna cable attached



Powering the Base Station

To power the base station:



1. Turn the power switch up to use power from the internal battery.
2. Turn the power switch down to use power from an external battery.
3. Wait for the power status indicator LED to turn red to indicate power. This will take up to 10 seconds. The unit will automatically compute a new position, or use a previously saved position, and start broadcasting. (Figure 2-6 is an example of the Outback S2™ screen when it is receiving corrections from a broadcasting base. Figure 2-7, on page 13, is an example of the Outback S3™ when it is receiving corrections from a broadcasting base.) (See “Base Station Position” on page 27 for more information.)

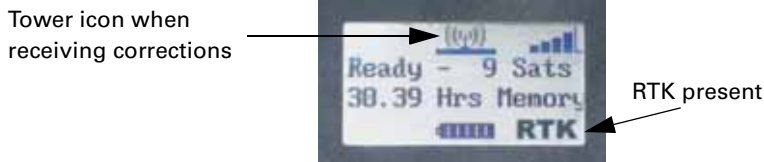


Figure 2-6. Example of the S2 screen when it is receiving corrections from a broadcasting source



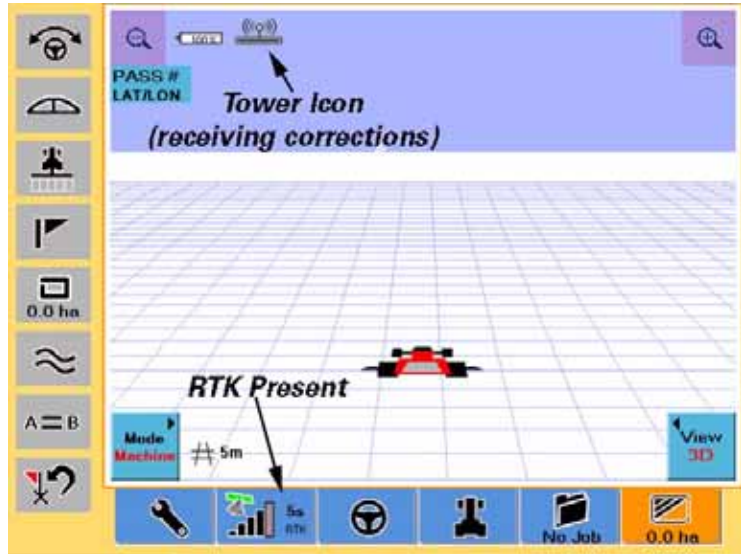


Figure 2-7. Example of the S3 screen when it is receiving corrections from a broadcasting source



Note: Make sure both the rover radio and base station are on the same channel or frequency in order for the rover radio to receive corrections from the base station.



Base Station Port Information

The base station's control panel has four ports:

- Internal battery charge port
- External battery port
- 9-pin serial communication port
- Radio antenna port
(See Figure 2-8)

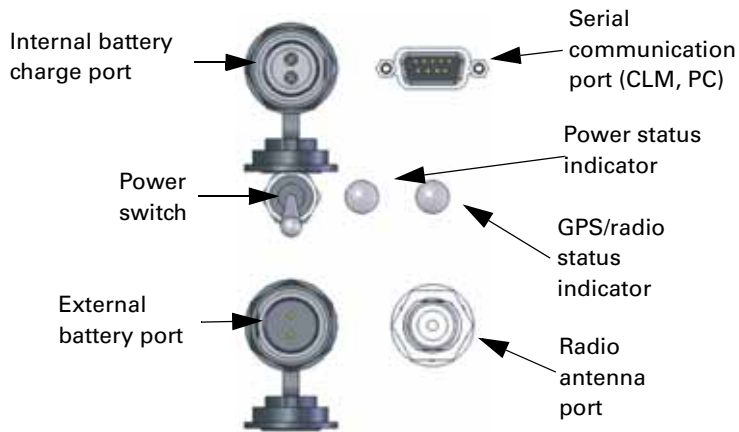


Figure 2-8. Control panel

The serial communication port is used for radio configuration, base point editing, advanced diagnostics and firmware updates through the Crescent Link Manager (CLM) program. See Chapter 3 for further information on the CLM program. The radio antenna port is used to attach the radio antenna to the base station for transmission. The internal battery port and external battery port are discussed at the end of this chapter.






LED information




There are two LEDs on the base station control panel:

- Base power status indicator
- Base GPS/radio indicator

Base power status indicator -

Power off	Power on (red)	Low battery (flashing)
		

Base GPS/radio indicator -

No GPS	Tracking GPS (green)	Broadcasting GPS corrections (flashing)
		



Rover radio -

The rover radio is attached to the top of the vehicle by magnetic mount. The rover radio includes:

- Radio receiver
- Antenna
- Power/communication cable



Rover radio installation on the vehicle:

Rover radio with whip antenna GPS antenna

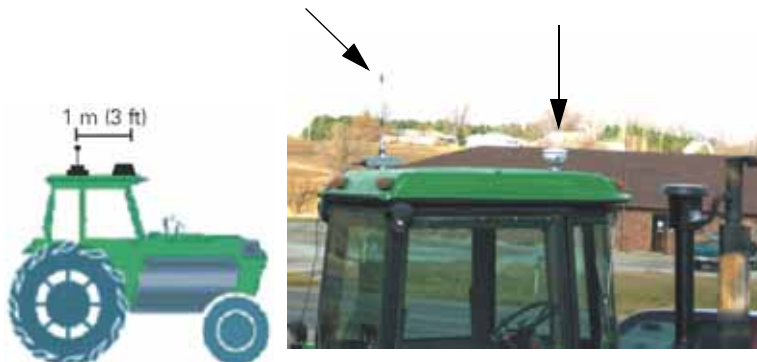


Figure 2-9. Rover radio installed on vehicle

1. Attach the rover radio, with the antenna, to the roof of the vehicle. (See Figure 2-8, on page 14) If the roof is not a magnetic material,



then attach the metal plate with adhesive pad to the roof in the place where the radio will be mounted.



Note: Make sure the rover radio and the GPS antenna are 1 meter (3 feet) from each other. (See Figure 2-9, on page 16.)



Note: The rover radio must receive consistent corrections from the base station for up to 15 minutes to achieve an RTK lock (maximum accuracy).

2. Replace the standard GLA3 GPS antenna with the new CDA3-RTK antenna, if applicable. (See Figure 2-10)



BaseLineHD ready



Not for use with BaseLineHD

Figure 2-10. CDA3-RTK antenna and GLA3 GPS antenna

If using the S2, proceed to step 3. If using the S3, proceed to step 6.

3. Power up the S2.
4. Change the correction type to LOCRTK. (See Figure 2-11)



Figure 2-11. Correction type.



Note: To ensure configuration of the correction type, it is best to reboot the S3 after selecting LOCRTK.



2: Installation

5. Connect the rover radio to the L-Dif connector on the back of the S2 console using the supplied power/communication cable. (See Figure 2-12)

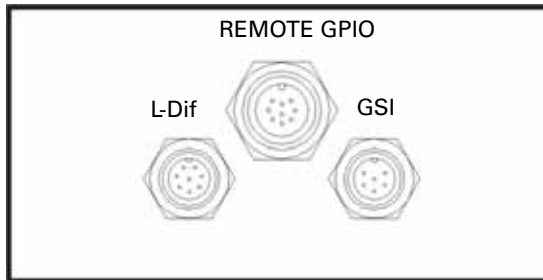


Figure 2-12. S2 Console

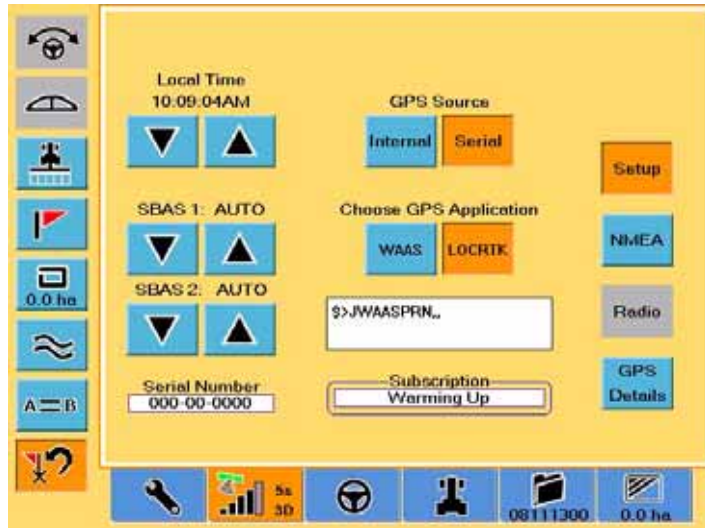


Note: The rover radio power LED will illuminate when the Outback S2 is powered on.

6. Power up the S3.
7. Access the GPS Setup screen in the S3 by pressing the Setup button on the GPS Status screen.



8. Select LOCRTK as the correction on the GPS Setup screen on the GPS screen.



Note: The rover radio must receive consistent corrections from the base station for up to 15 minutes to achieve RTK lock (maximum accuracy)..



Note: To ensure configuration of the correction type, it is best to reboot the S3 after selecting LOCRTK...



Battery Use and Charging

The base station has two options for a power source:

- Internal battery
- External battery

The power source can be selected with the 3-position power switch. (Refer to “Powering the Base Station” on page 12.)

Internal Battery - The internal battery provides up to 24 hours of field operation. The typical battery charge time is 6 hours with a 4 amp charger. The base station can run continuously if it is plugged into the battery charger. A battery charger with AC adapter is included with the base station. The internal battery can be charged at any time with the power switch in any position.

To recharge the internal battery:



Note: Make sure the power requirements on the charger matches the power on the AC outlet. This will be 110 volts or 220 volts, depending on the AC source.

1. Attach the 12 volt charger to the base station charge port. (See Figure 2-13)



Figure 2-13. Internal battery charger



2. Plug the AC cord from the battery charger into a wall AC outlet.



Figure 2-14. AC Cord



Note: When the internal battery shuts off due to a low battery condition, the power switch should be placed in the “off” position for a minimum of 5 to 10 seconds. This needs to be done prior to placing the switch in either of the “on” positions in order to reset the internal circuitry.

The battery charger has a multi color LED to indicate the charging status.

- Red indicates the battery is charging
- Orange indicates the battery is 80 percent charged
- Green indicates the battery is 100 percent charged and charger is in standby

To extend the overall internal battery life:

- The internal battery should be fully charged beforehand.
- When storing the unit or running it in the external power mode for extended periods (more than one week), the internal battery should be fully charged beforehand. The power switch should be placed in either the “off” position or the external power “on” position.
- The unit should never be stored with the switch in the internal “on” position even if the unit shuts itself off, unless it is connected to an automatic, float charger.



2: Installation

- The battery should not be stored in a discharged state or at elevated temperatures.
- Although the base station battery has a low self-discharge rate, which permits storage of a fully charged battery for up to a year, it is recommended that a battery be charged 6-9 months after receipt to account for storage from the date of manufacture to the date of purchase. Otherwise, permanent loss of capacity might occur as a result of sulfation. To prolong shelf life without charging, store batteries at 10° C (50° F) or less.
- For best results in general performance and longevity, keep operating temperature range between -20°C and +40°C (-4° F to 140° F).

The base station battery is the equivalent of the Power-Sonic model #PS-12120-F2 battery. General battery information can be found at www.power-sonic.com.

An external 12 volt automotive battery can be used to extend the field operation time.

To use an external battery:

1. Attach the external battery cable to the standard power cable. (See Figure 2-15)



Figure 2-15. External battery cable to the standard power cable



2. Connect the external battery cable to a 12 volt automotive battery.
(See Figure 2-16)



Figure 2-16. Standard power cable and external battery cable

3. Attach the standard power cable to the base station external battery port.
4. Turn the base station power switch to the down position to supply external power to the base station.



2: Installation





3: Crescent Link Manager and Base/Radio Configuration

Introduction

Base Station Position

Using Crescent Link Manager

Base Configuration

Changing Radio Configuration

Introduction

As mentioned in Chapter 1, the BaseLineX includes:

- Base station
- Rover radio

Hemisphere GPS' Crescent Link Manager (CLM) program is used to:

- Configure the base station
- Configure the base station radio
- Configure the rover radio

The CLM program offers several advantages:

- It allows surveyed (known) positions to be added to the base station
- It allows coordinate positions to be removed, edited, added and saved

The following equipment is required to manage the reference points and to configure the base radio:

- Base station
- PC
- CLM program
- 9-pin serial cable



Base Station Position



Note: This information is only important for users that need repeatable accuracy from one application to the next application or from season to season.

The base station will record a reference point at the location the first time it is used in a field. Ideally, the base station will remain at the exact, same position between applications. However, if the base station needs to be moved, please follow these guidelines when setting up the base station again:

- For repeatable accuracy (day-by-day, season-by-season, etc.) compared to the last use, always put the base station at the same exact location. The use of a permanent mount, such as a post, is recommended.



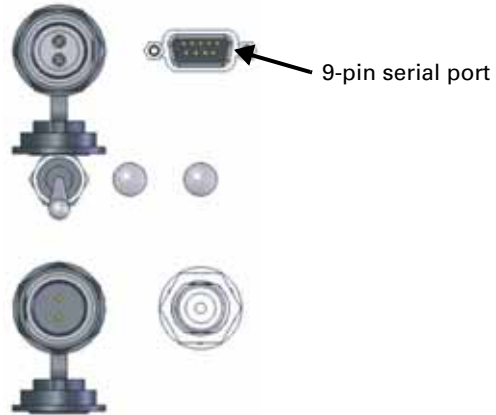
Note: Use the line Shift A=B and Snap A=B features in the S2/S3 guidance to provide repeatability in applications where visual indicators, such as crop rows or strips, are available. This reduces the need for consistent base positioning, application to application. In applications where no visual indicators are available to reposition the vehicle (rover station) using the Shift/Snap functions, it is important to return the base station to the same surveyed position to achieve repeatability from the previous application. **Any error in the base station's placement will be present in the vehicle (rover station) position.**

- For a fast start-up without the need for repeatable accuracy, always set-up the base station within a 5 meter (16.4 feet) radius of the previous location.
- To establish a new reference position, place the base station at a location at least 10 meters (32.8 feet) away from previous locations, or use the CLM program.



Using Crescent Link Manager

The PC communicates with the base station through a 9-pin serial cable when running the CLM program.



A USB to serial adapter can be used if the PC does not have a serial port.

The connector is a 9-pin female and requires a standard "straight" serial connection, not a null modem.



Base Configuration

Using Crescent Link Manager

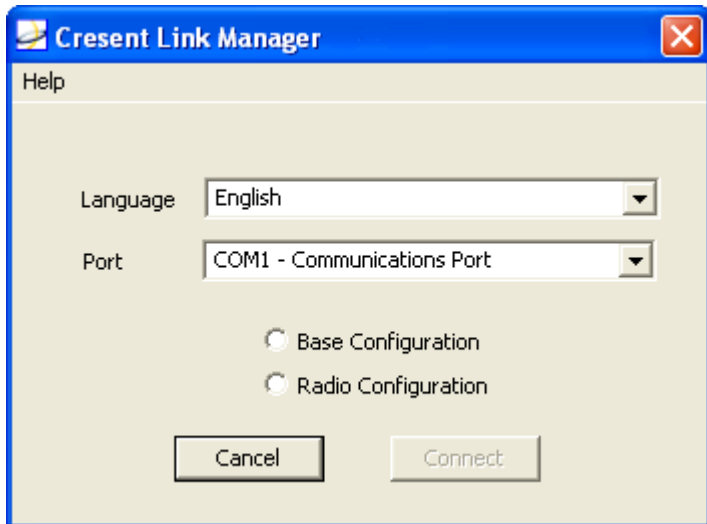
The operator uses the CLM program to manage the BaseLineX reference points.

To use the CLM program to create a reference point:



Note: The receiver must be powered on to communicate with the CLM program.

1. Open the CLM program.



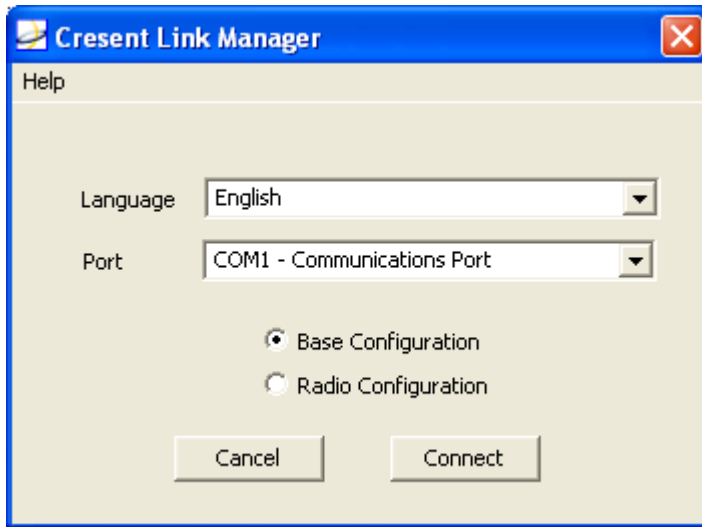
2. Select the language from the Language drop down list.
3. Select the com port from the Port drop down list.
4. Select Base Configuration.



3: Crescent Link Manager and Base/Radio Configuration

The Base Configuration allows for the following:

- Manage coordinates
 - Manage base station settings
5. Click the Connect button to open the Connection Establishment window and connect to the base station.



The progress bar will move from left to right and “Connecting...” will appear below it when attempting to connect to the base station.

A “Fail to Connect” message and an error message will appear under the progress bar if the CLM did not connect to the base station. There are three errors that can happen:

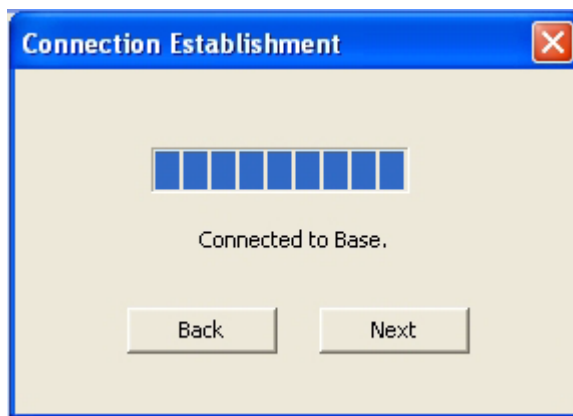
- “Invalid Mode, Must be connected to Base.”
Scenario: Attempted to configure the base station, but either a rover is connected or no base station is connected.
- “Connection failed on COM PORT [port number]”
Scenario: The PC com port is in use by another application.



- “Connection Failed, Radio is not responding.”
Scenario: Attempted to configure the radio but no radio was detected.

If an error is received, correct the problem, then:

1. Click the Back button after correcting the error.
2. Click the Connect button to connect again.
3. The progress bar will stop and “Connected to Base.” will appear after connecting to the base station.



4. Click the Next button to open the Base Configuration window.



3: Crescent Link Manager and Base/Radio Configuration

Base Configuration

File Tools Help

Add Coordinate(Degrees,Minutes,Seconds)

Latitude Degrees Minutes Seconds

Longitude Degrees Minutes Seconds

Altitude

Add

Add Coordinate(Decimal)

Latitude

Longitude

Altitude

Add

Coordinate List

#	Latitude	Longitude	Altitude	In Use
1	33.61412688	-111.91723919	407.91	
2	33.61412449	-111.91739950	409.013	
3	33.61468046	-111.91732276	414.564	
4	33.55745165	-111.88923907	379.324	
5	33.28997641	-111.85071770	340.647	

Read Coordinates

Write Coordinates

Delete Coordinate

Map All

Map Selected

Power Summary

Battery Voltage: 11.7054V Battery Remaining: 352 Minutes

Power Source: Internal Battery State: Operational

Critical Level: 11.00V Warning Level: 11.01V

Discharge: 500Minutes/V

GPS

Peak SNR: 0dB Satellites: 0

Standard Deviation: 0.00 m

The Base Configuration screen will display coordinates currently in the base station. The Add Coordinates(Degrees,Minutes,Seconds) section (Add Coordinates DMS section) provides the user a facility for manually adding coordinates to the surveyed coordinates list. Coordinates are defined by three values: Latitude, Longitude and Altitude.



Latitude is represented in degrees, minutes and seconds. The range in the latitude is as follows:

- Degrees: -90 to +90
- Minutes: 0 to 59
- Seconds: 0 to 59

Longitude's degrees, minutes and seconds' range is as follows:

- Degrees: -180 to +180
- Minutes: 0 to 59
- Seconds 0 to 59

Altitude is a decimal value in meters.

The Add Coordinate(Decimal) section provides the user with a facility for manually adding coordinates to the surveyed coordinate list. Coordinates are defined by three values:

- Latitude is represented in decimal degrees. The latitude may range from -90 to +90.
- Longitude is represented in decimal degrees. The longitude may range from -180 to +180.
- Altitude is a decimal value in meters.

The coordinates list provides the user with the ability to manage the coordinates list stored on the base station. The coordinates list is a list of surveyed positions at which the base station will lock onto if it is within a 5 meter (16.4 feet) radius. This feature provides increased precision in applications on a field when the base station is moved between applications.

- Read Coordinates: Downloads the coordinate list from the base station to the CLM software
- Write Coordinates: Overwrites the coordinate list stored in the base station with the list displayed in the CLM program.





Warning!

Any coordinates stored on the base station that are not in the current CLM list will be lost.

- Delete Coordinate: Deletes highlighted coordinate(s) from the CLM application coordinate list.
-



Note: These changes will not be reflected on the base station coordinate list until the coordinates list is written back to the base station.

The Power Summary section in the Base Configuration window provides the user feedback on the base station's power supply status.

- Battery Voltage: is the current voltage reading on the selected power supply (internal battery/external power).
- Power Source: displays the selection of the power source (internal battery/external power). Internal power is selected when the switch is in the up position.
- Battery Remaining: If internal power is selected, an estimate of remaining run time before a critical operating threshold of approximately 11 volts is met and the unit must shut down.
- Battery State: The power sources state. Enumerations of this value are "Operational" and "Low Battery."

The GPS section in the Base Configuration provides the status of the base station GPS solution to the user.

- Peak SNR: The greatest Signal-to-Noise ratio (SNR) of any space vehicle being tracked by the GPS receiver
- Satellites: The number of GPS satellites being tracked by the GPS receiver.
- Standard Deviation: The standard deviation monitors the GPS quality and accuracy.



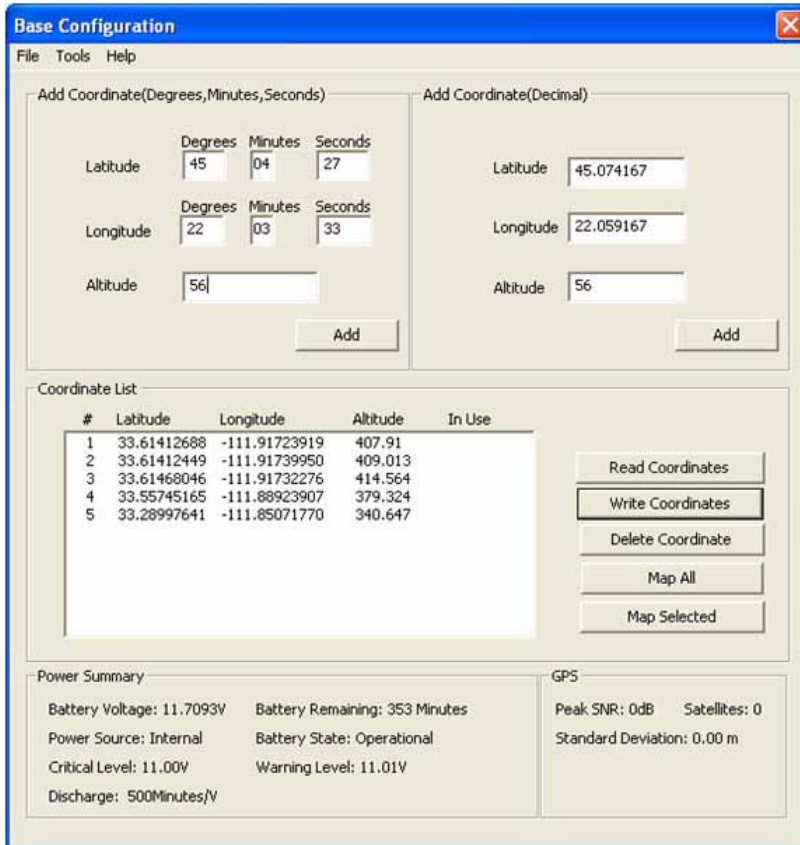
To add reference coordinates to the base station:

1. Enter the base station's coordinates into the Latitude, Longitude and Altitude field of the Add Coordinates(DMS) section. If the base station's coordinates are known, they can be entered into the Latitude, Longitude and Altitude field of the Decimal Coordinate section. Entering values into either section will automatically compute the values for the other section. The coordinate system adheres to the WGS-84 standard.



3: Crescent Link Manager and Base/Radio Configuration

2. Click the Add button to add the coordinates to the coordinates list.



Base Configuration

File Tools Help

Add Coordinate(Degrees,Minutes,Seconds)

Latitude Degrees Minutes Seconds
45 04 27

Longitude Degrees Minutes Seconds
22 03 33

Altitude 56

Add

Add Coordinate(Decimal)

Latitude 45.074167

Longitude 22.059167

Altitude 56

Add

Coordinate List

#	Latitude	Longitude	Altitude	In Use
1	33.61412688	-111.91723919	407.91	
2	33.61412449	-111.91739950	409.013	
3	33.61468046	-111.91732276	414.564	
4	33.55745165	-111.88923907	379.324	
5	33.28997641	-111.85071770	340.647	

Read Coordinates

Write Coordinates

Delete Coordinate

Map All

Map Selected

Power Summary

Battery Voltage: 11.7093V Battery Remaining: 353 Minutes

Power Source: Internal Battery State: Operational

Critical Level: 11.00V Warning Level: 11.01V

Discharge: 500Minutes/V

GPS

Peak SNR: 0dB Satellites: 0

Standard Deviation: 0.00 m

3. Repeat steps 1 and 2 to add multiple points.



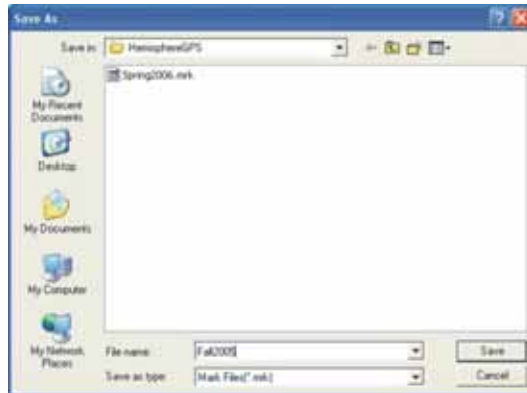
Note: Clicking on the Read Coordinates button appends the list of coordinates with the points in the base station.

4. Click the Write Coordinates button to save the coordinates list to the base station.



Saving a coordinates list

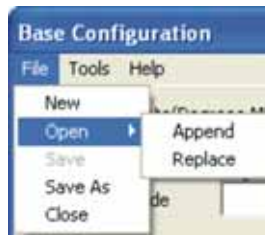
1. Click *File > Save As...* to save a coordinates list.



2. Choose a file name for the coordinates list.
3. Click the Save button to save the file.

Opening a coordinates list

1. Click *File > Open* to bring up the Open menu.



2. Select *Append* to add a coordinates list's points to the existing list.
3. Select *Replace* to replace the existing list with a new list.



3: Crescent Link Manager and Base/Radio Configuration

4. Select the coordinates list file that needs to be opened.



Deleting Points in Coordinates List

1. Click on the points in the Coordinate List that are to be deleted.
2. Click the Delete Coordinates button to delete the coordinates.



Changing Radio Configuration

The CLM program provides a mechanism for configuring the radio settings for multiple base stations and rover radios, allowing them to operate in close proximity without interfering with each other. The CLM program allows the following items to be configured:

- Base and rover Maxstream radios (900 MHz)
- Base and rover MicroHard radios (900 MHz)
- Base and rover Satel radios (450 MHz)



Note: The CLM program automatically determines the configuration (base and rover) and radio type (Maxstream, MicroHard, or Satel).

Base Station Maxstream Radio

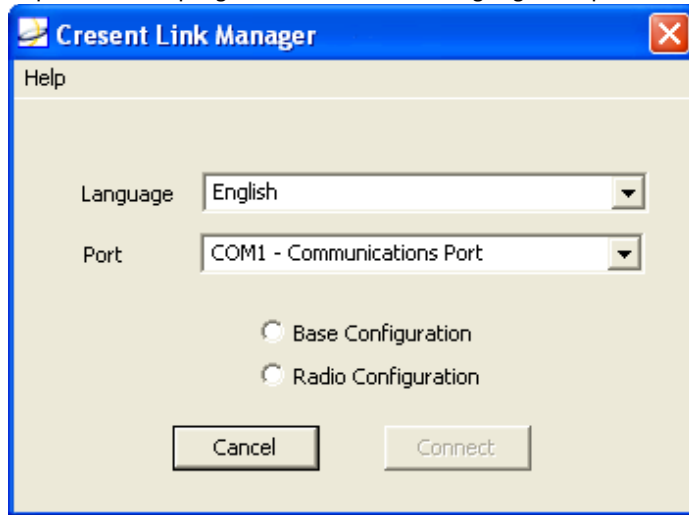
The CLM program allows the base station and rover ID to be changed. The base station radio ID may be configured to not interfere with other base stations operating in close proximity. The rover radio's Radio ID must match the base station's Radio ID. If they do not match, they will not communicate. The Base Maxstream Radio is typically used in North America, South America, New Zealand and Australia.



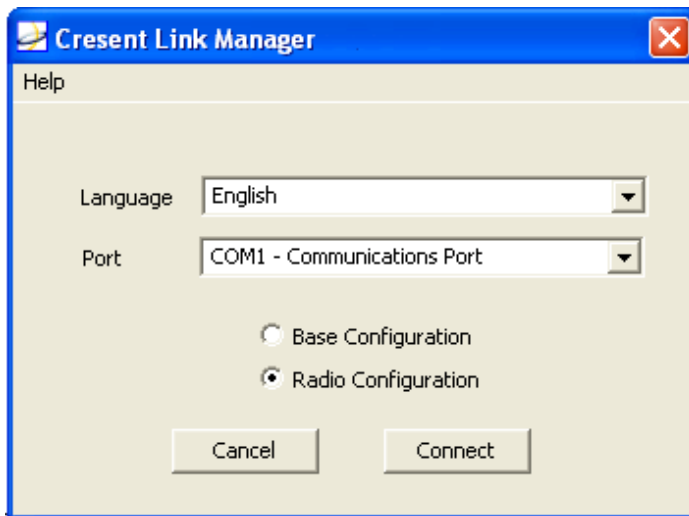
3: Crescent Link Manager and Base/Radio Configuration

To change the Radio ID:

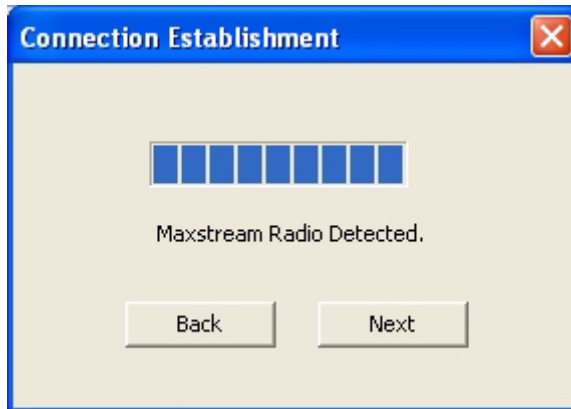
1. Open the CLM program, and select the language and port..



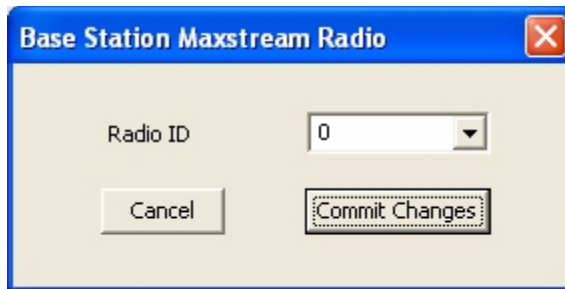
2. Click on the Radio Configuration option button.



- Click the Connect button to connect to the Connection Establishment window.



- Click the Next button to go to the Base Station Maxstream Radio window.



- Select the Radio ID from the drop down menu that will be used.
- Click the Commit Changes to accept the Radio ID. A confirmation screen will appear when the changes have been accepted.

Any changes made to the base station ID must be made to the rover radio ID. This can be done through the CLM program, or the S2 Service menu and the S3 Radio screen.

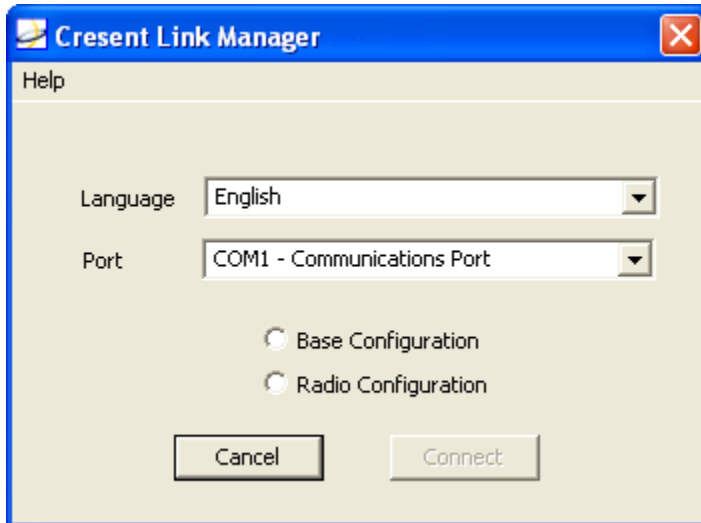


Rover Maxstream Radio Configuration

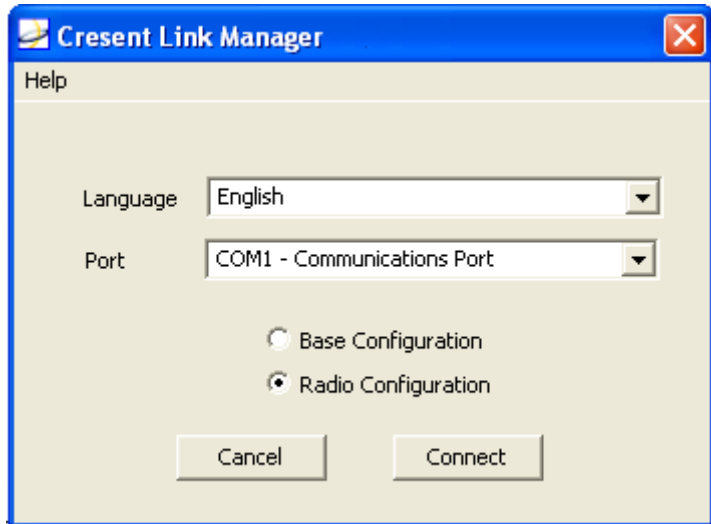
This feature allows for the rover radio's radio ID on the rover Maxstream radio to be configured to match the Base Maxstream Radio.

To change the Radio ID:

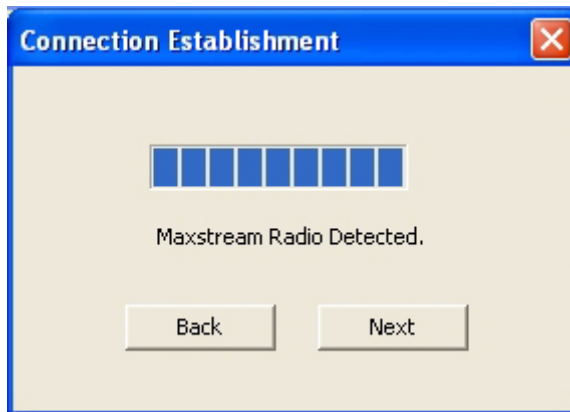
1. Connect the 9-pin serial cable to the rover receiver (S2 or S3).
2. Open the CLM program, and select the language and the port..



3. Click on the Radio Configuration option button.

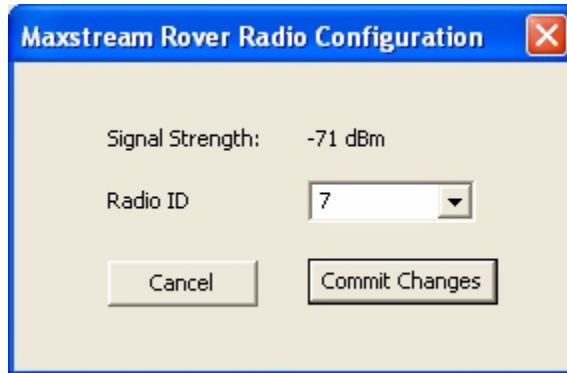


4. Click the Connect button to open the Connection Establishment window.

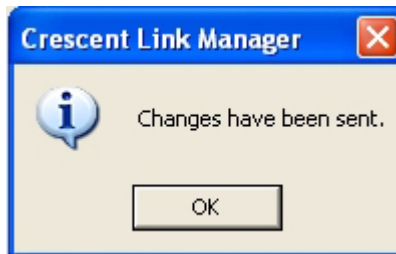


3: Crescent Link Manager and Base/Radio Configuration

5. Click the Next button to go to the Rover Maxstream Radio configuration window.



6. Select the desired Radio ID from the drop down menu. Values range from 0 to 9. This should match the value chosen for the base station.
7. Click the Commit Changes button to accept the Radio ID. A status screen and a confirmation screen are displayed.

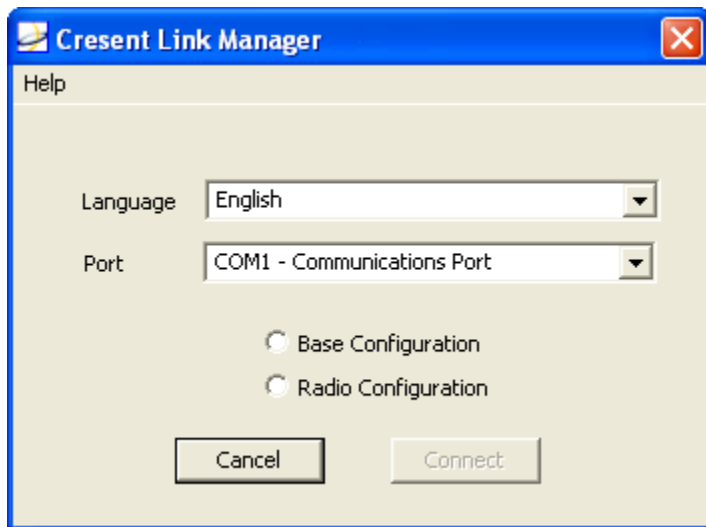


Base Station Microhard Radio

The CLM program allows the base station and rover ID to be changed. The base station radio ID may be configured to not interfere with other base stations operating in close proximity. The rover radio's Radio ID must match the base station's Radio ID. If they do not match, they will not communicate. The Base Microhard Radio is typically used in North America, South America, New Zealand and Australia.

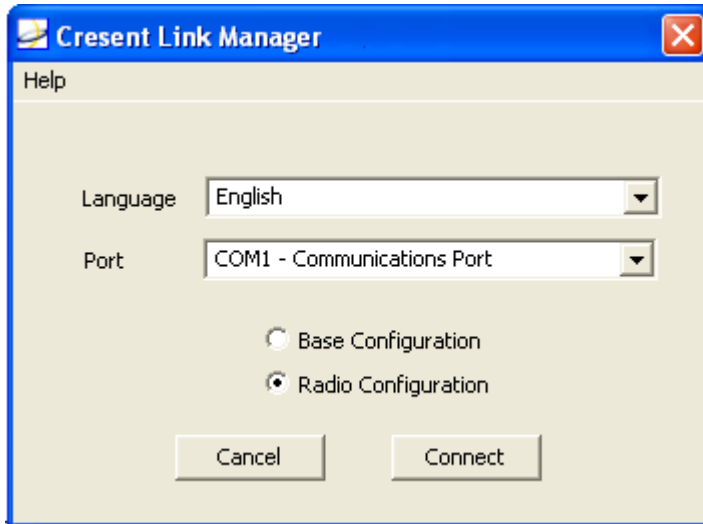
To change the Radio ID:

1. Open the CLM program.

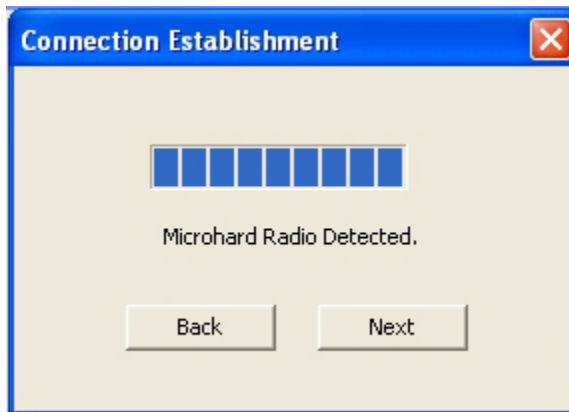


3: Crescent Link Manager and Base/Radio Configuration

2. Click on the Radio Configuration option button.



3. Click the Connect button to connect to the Connection Establishment window.



4. Click the Next button to go to the Microhard Base Radio Configuration window.



5. Select the Radio ID from the drop down list. Values range from 0 to 99.
6. Click the Commit Changes to accept the Radio ID.

Any changes made to the base station ID must be made to the rover radio ID. This can be done through the CLM program, or the S2 Service menu and the S3 Radio screen.

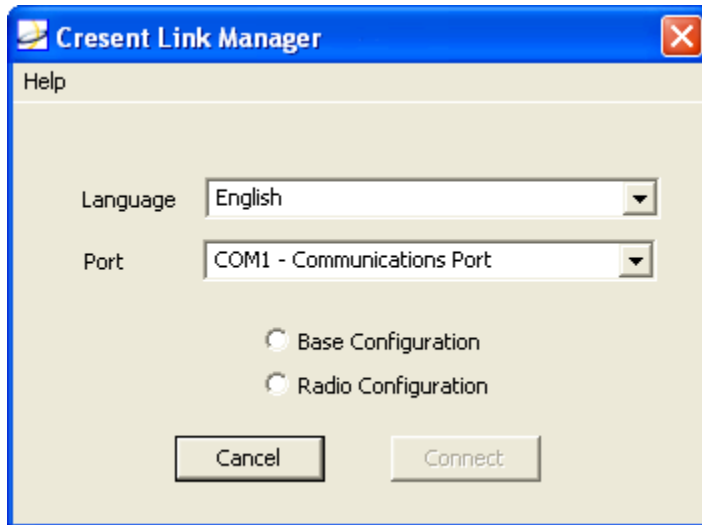


Rover Microhard Radio Configuration

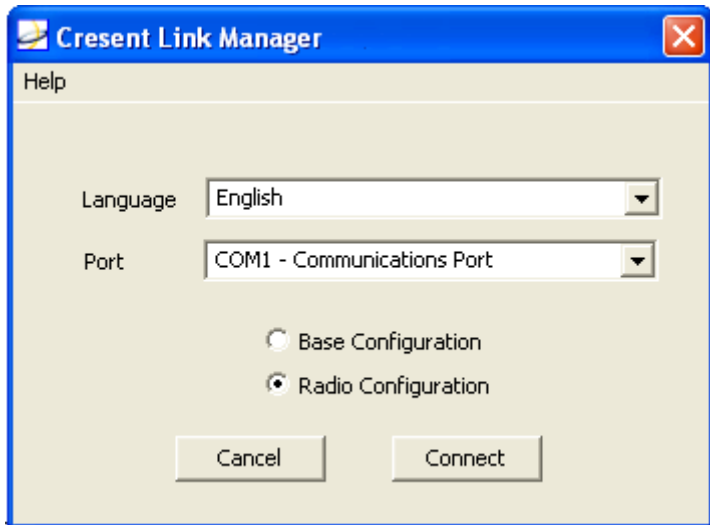
This feature allows for the rover radio's radio ID on the rover Microhard radio to be configured to match the Base Microhard Radio.

To change the Radio ID:

1. Connect the 9-pin serial cable to the rover receiver (S2 or S3).
2. Open the CLM program, and select the language and the port..



3. Click on the Radio Configuration option button.

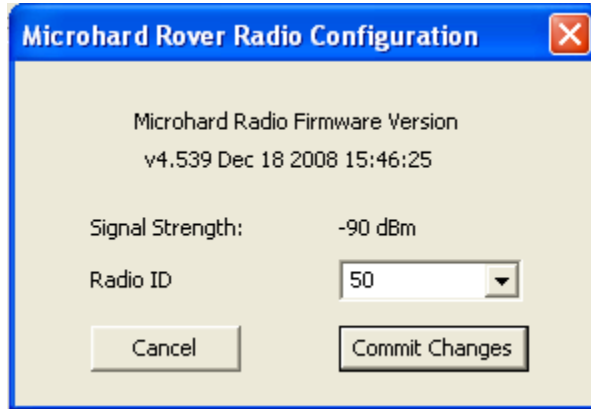


4. Click the Connect button to open the Connection Establishment window.



3: Crescent Link Manager and Base/Radio Configuration

5. Click the Next button to go to the Rover Microhard Radio configuration window.



6. Select the desired Radio ID from the drop down menu. Values range from 0 to 99. This should match the value chosen for the base station.
7. Click the Commit Changes button to accept the Radio ID.

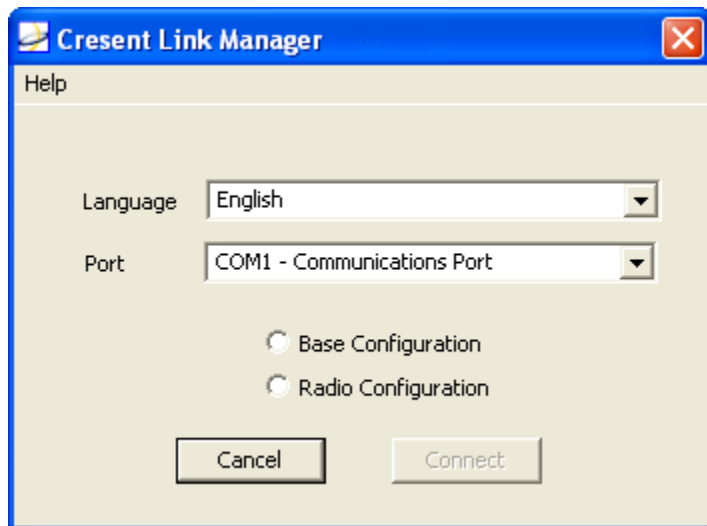


Base Station Satel Radio Configuration

The CLM program allows base station and rover radio frequency to be changed. The base station radio frequency may be configured to not interfere with other base stations operating in close proximity. The base station's frequency must match the rover radio's frequency. If they do not match, they will not communicate. Change the frequency if interference from neighbor rover radios occurs. The Satel Radio is typically used in Europe. A license to operate may be necessary to legally operate the Satel Radio. **It is the responsibility of the user to obtain the license from the local authorities and to operate the system within the appropriate legal limits.**

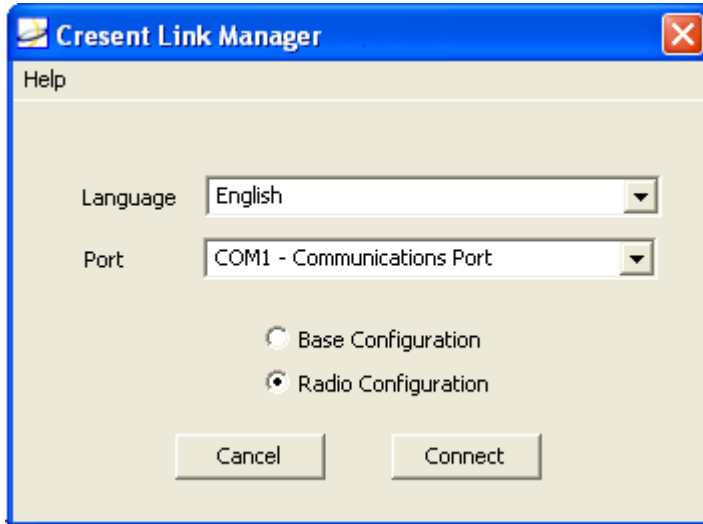
To use the Satel Base Radio Configuration:

1. Open the CLM program.

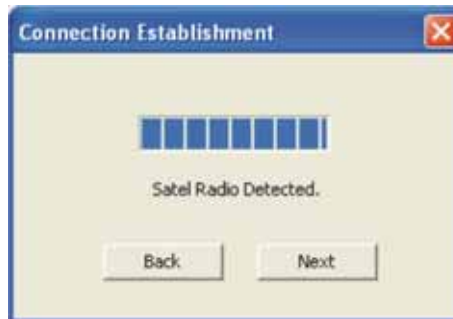


3: Crescent Link Manager and Base/Radio Configuration

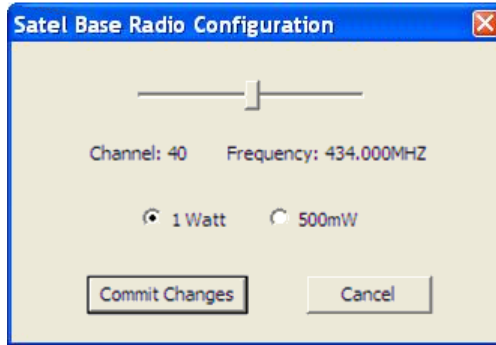
2. Click on the Radio Configuration option button.



3. Click the Connect button to connect to the Connection Establishment window.



4. Click the Next button to open the Base Station Satel Radio Configuration window.



5. Move the slider left or right to select the desired frequency.
6. Click the Commit Changes button to accept the frequency.

Any changes to the base radio frequency must be made to the rover radio frequency through the CLM program, S2 service menu or the S3 Radio screen.

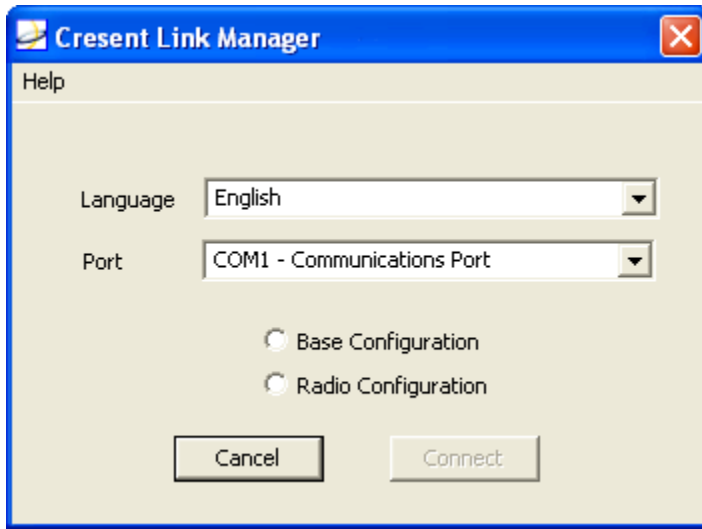


Satel Rover Radio Configuration

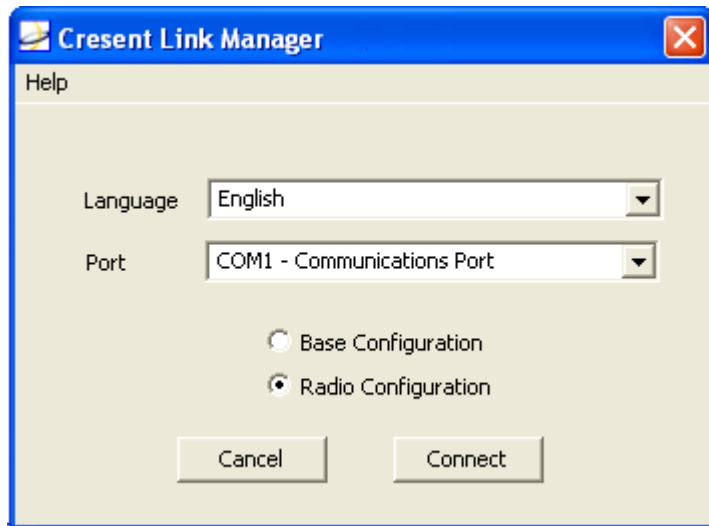
This feature allows the rover radio's frequency to be changed using the Satel.

To change the frequency:

1. Connect the 9-pin serial cable to the rover receiver (S2 or S3).
2. Open the CLM program.



3. Click on the Radio Configuration option button.

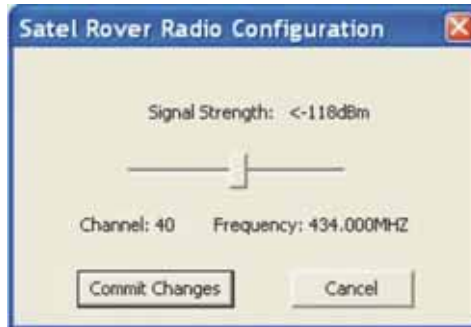


4. Click the Connect button to open the Connection Establishment window.



3: Crescent Link Manager and Base/Radio Configuration

5. Click the Next button to open the Satel Rover Radio Configuration window.



6. Move the slider left or right to select the desired frequency.
7. Click the Commit Changes button to accept the frequency.

Configuring the Rover Radio using the S2 - The rover radio can also be configured using the S2.



Note: Proper installation is very critical to achieving high accuracy. Carefully install the local base unit, rover radio, S2 and GPS antenna according to their individual instructions. See the S2 User Guide for information on S2 installation. For radio configuration using the S3, skip to “Configuring the Rover Radio Using the S3” on page 58.

1. Ensure that the base unit radio and the rover radio channel match by selecting the Radio Link ID in the S2 Service Menu. Scroll down to “Service Menu” in the Setup menu to get to the Radio Link ID.
2. Change the Radio Link ID in the Service Menu if necessary.



3. Press the Enter button to set the change in the Radio Link ID.



Note: When entering the Radio Link ID menu item in the Diagnostics or Service Menu, the S2 stops receiving corrections from the local base unit until the Radio Link ID selection is exited. Staying in the Radio Link ID field for an extended period of time will cause the accuracy of the system to temporarily degrade. Remain in these menus only as long as necessary.

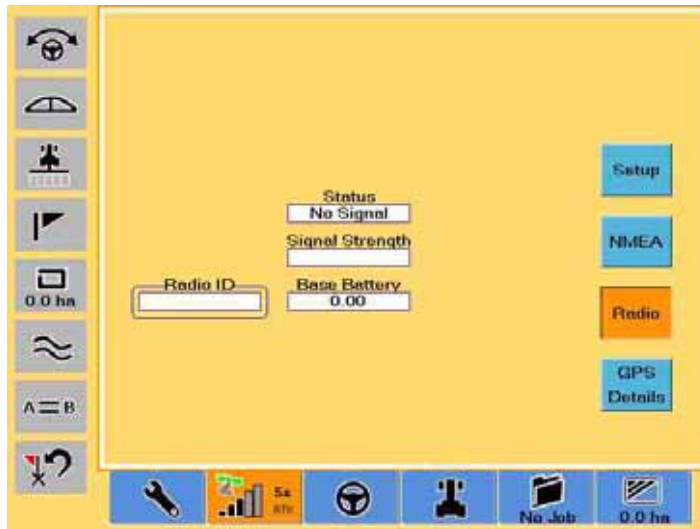


Configuring the Rover Radio Using the S3 - The rover radio can be configured using the S3.



Note: Proper installation is very critical to achieving high accuracy. Install the local base unit, rover radio, S3 and GPS antenna strictly according to their individual instructions. See the S3 User Guide for information on S3 installation.

1. Ensure that the base unit radio and the rover radio channel match by pressing the Radio button on the right side of the GPS Status screen. The Radio screen appears.



2. Change the channel by selecting the Radio ID field on the Radio screen. The system will display the Radio Edit screen for the for the detected radio.



3. Enter the Radio ID channel or the frequency and touch the Ok button to save your changes.



Note: When changing the Radio ID on the Radio screen, the S3 stops receiving corrections from the local base unit radio until you have made your selection.



3: Crescent Link Manager and Base/Radio Configuration





Appendix

Frequently Asked Questions
Sales and Service Information

Frequently Asked Questions

Why does the S2 screen show the battery symbol and the pulsating tower but no RTK symbol?

The pulsating tower means the rover is communicating with the base station. For the RTK symbol to appear, the S2 must calculate an RTK solution which may take up to 15 minutes of constant communication with the base station. To achieve a high level of accuracy, the S2 must acquire an RTK solution (the RTK symbol will appear).

Can more than one tractor operate on one BaseLineX simultaneously?

Yes, one BaseLineX base station can supply correction to multiple machines, provided the machines are:

- Equipped with an RTK compatible receiver such as an S2 or S3
- Equipped with a rover radio set to the appropriate frequency
- Within radio range of the transmitting base

How long does the base station battery last?

A new BaseLineX battery will operate for up to 20 hours continuously after 8 hours of charging. The operation time may decrease slowly with age and multiple charging cycles as with any battery.

When using the BaseLineX, the passes seem to weave like a snake. What should be done?

First of all, check the S2 or S3 and the eDriveTC to make sure they are both setup according their respective owners manual. If all settings are within the specifications, then change the correction type to SBAS and reboot. Use straight guidance and test the eDriveTC performance. If the performance does not change then fine tune until smooth straight lines are achieved. Once the straight line performance is appropriate, then change the correction type back to LOCRTK and reboot.

It is best to fine eDriveTC performance prior adding RTK and starting fieldwork. The precision of eDriveTC steering is not affected by correction type.



How should the sway blocks on the 3-point form mounted equipment be adjusted for use with eDriveX and RTK?

In general, it is best to have the sway blocks set as tight as possible depending on the operation. In uniform soil conditions, tighter sway blocks will prevent the implement from moving independent of the vehicle.

In rough non-uniform conditions, where eDriveTC is required to make more aggressive corrections, performance would be better with the sway blocks set looser than normal. This allows the tractor to move quickly back and forth without jerking the implement off-line.

For best performance it is important to install large evenly spaced coulters to help stabilize the 3-point mounted implement behind the vehicle.

The green light on the BaseLineX is flashing, but the S2 or S3 cannot receive signals?

- Make sure the S2 or S3 and rover radio are less than 2.5 miles (4.0 kilometers) from the BaseLineX with a clear line of sight.
- Check the rover radio cable connections.
- Double check the radio channel ID on the base unit using a PC and Crescent Link Manager. Make sure the channel ID on the base radio matches the channel ID on the rover radio. Confirm both radio channel ID's and reboot the base and the S2 or S3.

How can the previous guidance line be matched with the next operation?

If the previous operation left visible marks in the field, then these marks can be used to re-align the machine. To accomplish this, simply use the same A+Direction line used in the previous operation and use Snap A=B as needed to line up on your previous marks.

Does the BaseLineX need to be put back in the same location every time? Why?

No. However, if achieving absolute repeatability is desired, and there are no visible marks in the field for re-aligning the machine, then it is critical for the same base location to be used.



See the previous question seven for more information achieving accuracy and repeatability.

Can the BaseLineX on top of a center pivot, grain bin or vehicle instead of the tripod?

This can be done but it is not typically recommended. The BaseLineX must have a stable installation platform to prevent movement during operation. In addition, one must consider problems with multi-path interference in any installation, temporary or permanent. The BaseLineX could potentially get multi-path signals when installed near any reflective surfaces.

What accuracy is expected with the BaseLineX?

With BaseLineX and RTK correction, the accuracy to the GPS receiver is typically less than 3 centimeters. However, this accuracy is not always achievable as seen "in-the-dirt." The steering error of the machine and the movement of your implement across the line will dominate the in-the-dirt results. Typically, the eDriveX can steer a standard MFWD tractor within 10 centimeters of the GPS line in good conditions with no external error factors.



Sales and Service Information

Contacting the Factory

U.S:

Outback Guidance

Hemisphere GPS

2207 Iowa Street

Hiawatha, KS 66434

USA

Canada:

Outback Canada

Hemisphere GPS

3244 Portage Avenue

Winnipeg, MB R3K 0Y9

CANADA

ONLINE: <http://www.outbackguidance.com>

PHONE: Monday Through Friday 8AM-5PM U.S. Central Time

- **U.S:** 1-800-247-3808 (Customer Service & Ordering)
- **Canada:** 1-866-888-4472 (Customer Service & Ordering)
- **From all other countries:** 01-785-742-2976

E-MAIL: 24 hours/7 days a week, your inquiry will receive a response from one of our Customer Support Representatives within one business day.

- **Sales:** outbacksales@outbackguidance.com
- **Customer Service:** outbackcs@outbackguidance.com
- **Website Feedback:** outbackweb@outbackguidance.com

FAX: 24 hours/7 days a week, your inquiry will receive a response from one of our Customer Support Representatives within one business day.

- 1-785-742-4584



U.S. REGIONAL SALES OFFICES:

- Outback Texas - Hewitt, TX 1-866-857-4448
- Outback Dakotas - Fargo, ND 1-888-825-6031



Outback BaseLineX Extended Service Plan (ESP) Summary

U.S. and Canada Only

Item	Standard Term	Extended Term
Price	Free	\$399
Term	1 Year ESP	3 Year ESP (Standard +2 Years)
Exchange Service	Yes	Yes
Software Revision Updates	No Charge	No Charge
Software Revision Installation	Provided by Customer or OGCTM	Provided by Customer or OGCTM
Damage During Shipments	Covered	Covered
Damage After Customer Receipt	Not Covered	Not Covered
Shipping, Outback to Customer	Outback Paid (Next Day Air & Saturday* Delivery)	Outback Paid (Next Day Air & Saturday* Delivery)
Shipping, Customer to Outback	Outback Paid (Ground Service)	Outback Paid (Ground Service)

* Saturday delivery may not be available in all service areas.



Limited Outback BaseLineX Extended Service Plan

The Outback BaseLineX ESP (U.S. and Canada only) applies only to the non-software portions of the electronic components of the product, including the console and related cables. Coverage for the mechanical portions of the Outback BaseLineX is described in the warranty notice. The limited plan term is one-year standard, or three-years extended if purchased at the time of the original order, beginning on the date of invoice to the original purchaser.

Damage caused by shipping the product(s) to the original purchaser is covered under this limited plan. Otherwise, this limited plan does not cover damage due to external causes, including accident, abuse, misuse, problems with electrical power, servicing not authorized by Hemisphere GPS, usage not in accordance with product instructions, failure to perform required preventive maintenance and problems caused by use of parts and components not supplied by Hemisphere GPS.

This limited plan does not cover any items that are in one or more of the following categories: software (except for Hemisphere GPS authorized revision updates), external devices (except as specifically noted), accessories or parts added to an Outback BaseLineX system after the system is shipped from Hemisphere GPS, accessories or parts that are not installed in the Hemisphere GPS factory.

Hemisphere GPS will provide, on an exchange basis and subject to the Hemisphere GPS Exchange Policy in effect on the date of the exchange, replacement parts (up to and including a complete Outback BaseLineX system) for the Outback BaseLineX product(s) covered under this limited plan when parts require replacement. To request service, you must call Hemisphere GPS (U.S. 800-247-3808, Canada 866-888-4472) or go to outbackguidance.com for information, within the plan period. If replacement is required, Hemisphere GPS will issue a Return Material Authorization Number and will ship by UPS Next Day Air & Saturday Delivery the replacement part(s) within 1 business day. You must ship by UPS Ground Service collect, the original product(s) back to



Hemisphere GPS in this packaging. For Canadian customers, Saturday delivery is not available and the shipping carrier is Purolator.

In any instance in which Hemisphere GPS issues a Return Material Authorization Number, Hemisphere GPS must receive the original part(s) prior to the expiration of the plan period in order for the replacement(s) to be covered by the limited plan. Failure to return original part(s), for which replacement(s) have been sent, within 30 days of initial shipment, will result in the issuance of an invoice for the cost of the sent part(s). Failure to pay the invoice, or return the part(s), will result in cancellation of this limited plan.

Hemisphere GPS owns all parts removed from repaired products. Hemisphere GPS uses new and reconditioned parts made by various manufacturers in performing service repairs and building replacement products. If Hemisphere GPS repairs or replaces a product, its plan term is the remainder of the limited plan term.

These provisions apply to the Limited Outback BaseLineX Extended Service Plan only. Hemisphere GPS reserves the right to make improvements in design or changes in specifications at any time, without incurring any obligation to owners of units previously sold. No one is authorized to alter, modify or enlarge this Limited Outback BaseLineX Extended Service Plan nor the exclusions, limitations, and reservations.





HEMISPHERE GPS END USER LICENSE AGREEMENT

IMPORTANT - This is an agreement (the "**Agreement**") between you, the end purchaser ("**Licensee**") and Hemisphere GPS Inc. ("**Hemisphere**") which permits Licensee to use the Hemisphere software (the "**Software**") that accompanies this Agreement. Please read and ensure that you understand this Agreement before installing or using the Software.

BY INSTALLING OR USING THE SOFTWARE, LICENSEE THEREBY AGREES TO BE LEGALLY BOUND BY THE TERMS OF THIS AGREEMENT. IF YOU DO NOT AGREE TO THESE TERMS, (I) DO NOT INSTALL OR USE THE SOFTWARE, AND (II) PROMPTLY RETURN THE SOFTWARE AND ALL RELATED ITEMS WITHIN THIRTY DAYS TO THE PLACE WHERE YOU PURCHASED THE SOFTWARE.

HEMISPHERE PROVIDES LIMITED WARRANTIES IN RELATION TO THE SOFTWARE. AS WELL, THOSE WHO USE THE SOFTWARE DO SO AT THEIR OWN RISK. YOU SHOULD UNDERSTAND THE IMPORTANCE OF THESE AND OTHER LIMITATIONS SET OUT IN THIS AGREEMENT BEFORE INSTALLING OR USING THE SOFTWARE.

1. **LICENSE.** Hemisphere hereby grants to Licensee a non-transferable and non-exclusive license to use the Software, and all Updates (collectively the "**Software**"), solely in binary executable form.
2. **RESTRICTIONS ON USE.** Licensee agrees that Licensee and its employees will not directly or indirectly, in any manner whatsoever:
 - a. install or use more copies of the Software than the number of copies that have been licensed;
 - b. use or install the Software in connection with any product other than the product the Software was intended to be used or installed on as set out in the documentation that accompanies the Software.
 - c. copy any of the Software or any written materials for any purpose except as part of Licensee's normal backup processes;
 - d. modify or create derivative works based on the Software;
 - e. sub-license, rent, lease, loan or distribute the Software;
 - f. permit any third party to use the Software;
 - g. use or operate the Software for the benefit of any third party in any type of service outsourcing, application service provider service or service bureau capacity;

- h. reverse engineer, decompile or disassemble the Software or otherwise reduce it to a human perceivable form; or
 - i. assign this Agreement or sell or otherwise transfer the Software to any other party except as part of the sale or transfer of all or substantially all of Licensee's business and assets.
- 3. **UPDATES.** At Hemisphere's discretion Hemisphere may make Updates available to Licensee. An update ("**Update**") means any update to the Software that is made available to Licensee including error corrections, enhancements and other modifications. Licensee may access, download and install Updates during the Warranty Period only. All Updates that Licensee downloads, installs or uses shall be deemed to be Software and subject to this Agreement. Hemisphere reserves the right to modify the Software without any obligation to notify, supply or install any improvements or alterations to existing Software.
- 4. **SUPPORT.** Hemisphere may make available directly or through its authorized dealers telephone and email support for the Software. Contact Hemisphere to find the authorized dealer near you. As well, Hemisphere may make available user and technical documentation regarding the Software. Hemisphere reserves the right to reduce and limit access to such support at any time.
- 5. **BACKUPS AND RECOVERY.** Licensee shall back-up all data used, created or stored by the Software on a regular basis as necessary to enable proper recovery of the data and related systems and processes in the event of a malfunction in the Software or any loss or corruption of data caused by the Software. Licensee shall assume all risks of loss or damage for any failure to comply with the foregoing.
- 6. **OWNERSHIP.** Hemisphere and its suppliers own all rights, title and interest in and to the Software and related materials, including all intellectual property rights. The Software is licensed to Licensee, not sold.
- 7. **TRADEMARKS.** "Hemisphere GPS", "Outback Guidance", "BEELINE", "Crescent", "Eclipse" and the associated logos are trademarks of Hemisphere. Other trademarks are the property of their respective owners. Licensee may not use any of these trademarks without the consent of their respective owners.
- 8. **WARRANTY.** Hemisphere does not warrant the contents of the Software, that the Software will meet Licensee's requirements or that it will be error free. The Software is furnished "AS IS" and without warranty as to the performance or results you may obtain by using the Software. The entire risk as to the results and performance of the Software is assumed by you. Hemisphere does not warrant or guarantee the precision or accuracy of positions obtained when using the Software. The Software is not intended and should not be used as the primary means of navigation or for use in safety of life applications. The potential positioning and navigation accuracy



obtainable with the Software as stated in the Software documentation serves to provide only an estimate of achievable accuracy based on specifications provided by the US Department of Defense for GPS positioning and DGPS service provider performance specifications, where applicable.

9. **WARRANTY DISCLAIMER.** THE WARRANTIES IN THIS AGREEMENT REPLACE ALL OTHER WARRANTIES, EXPRESS OR IMPLIED. HEMISPHERE MAKES NO REPRESENTATION, WARRANTY OR CONDITION OF ANY KIND TO LICENSEE, WHETHER VERBAL OR WRITTEN AND HEREBY DISCLAIMS ALL REPRESENTATIONS, WARRANTIES AND CONDITIONS OF ANY KIND INCLUDING FITNESS FOR A PARTICULAR PURPOSE, MERCHANTABILITY, ACCURACY, RELIABILITY OR THAT THE USE OF THE SOFTWARE WILL BE UNINTERRUPTED OR ERROR-FREE AND HEREBY DISCLAIMS ALL REPRESENTATIONS, WARRANTIES AND CONDITIONS ARISING AS A RESULT OF CUSTOM, USAGE OR TRADE AND THOSE ARISING UNDER STATUTE.
10. **CHANGE TO WARRANTY.** No employee or agent of Hemisphere is authorized to change the warranty provided or the disclaimer of warranty provisions. All such changes will only be effective if pursuant to a separate agreement signed by senior officers of the respective parties.
11. **LIMITATION OF LIABILITY.** IN NO EVENT WILL HEMISPHERE BE LIABLE TO LICENSEE FOR ANY INCIDENTAL, CONSEQUENTIAL, SPECIAL OR INDIRECT DAMAGES INCLUDING ARISING IN RELATION TO ANY LOSS OF DATA, INCOME, REVENUE, GOODWILL OR ANTICIPATED SAVINGS EVEN IF HEMISPHERE HAS BEEN INFORMED OF THE POSSIBILITY OF SUCH LOSS OR DAMAGE. FURTHER, IN NO EVENT WILL HEMISPHERE'S TOTAL CUMULATIVE LIABILITY HEREUNDER, FROM ALL CAUSES OF ACTION OF ANY KIND, EXCEED THE TOTAL AMOUNT PAID BY LICENSEE TO HEMISPHERE TO LICENSE THE SOFTWARE. THIS LIMITATION AND EXCLUSION APPLIES IRRESPECTIVE OF THE CAUSE OF ACTION, INCLUDING BUT NOT LIMITED TO BREACH OF CONTRACT, NEGLIGENCE, STRICT LIABILITY, TORT, BREACH OF WARRANTY, MISREPRESENTATION OR ANY OTHER LEGAL THEORY AND WILL SURVIVE A FUNDAMENTAL BREACH. Hemisphere will not be liable for any loss or damage caused by delay in furnishing the Software or any other performance under this Agreement. Hemisphere's entire liability and your exclusive remedies for our liability of any kind (including liability for negligence) for the Software covered by this Agreement and all other performance or non-performance by Hemisphere under or related to this Agreement are to the remedies specified by this Agreement.
12. **LIMITS ON LIMITATION OF LIABILITY.** Some jurisdictions do not allow for the limitation or exclusion of liability for incidental or consequential damages, so the above limitation or exclusion may not apply to Licensee and Licensee may also have other legal rights which may vary from jurisdiction to jurisdiction.



13. **BASIS OF BARGAIN.** Licensee agrees and acknowledges that Hemisphere has set its prices and the parties have entered into this Agreement in reliance on the limited warranties, warranty disclaimers and limitations of liability set forth herein, that the same reflect an agreed-to allocation of risk between the parties (including the risk that a remedy may fail of its essential purpose and cause consequential loss), and that the same forms an essential basis of the bargain between the parties. Licensee agrees and acknowledges that Hemisphere would not have been able to license the Software at the amount charged on an economic basis without such limitations.
14. **INFRINGEMENT.** Hemisphere shall not be liable to indemnify the Licensee against any loss sustained by it as the result of any claim made or action brought by any third party for infringement of any patent, registered design or like instrument of privilege by reason of the use or application of the Software by the Licensee or any other information supplied or to be supplied to the Licensee pursuant to the terms of this Agreement. Hemisphere shall not be bound to take legal proceedings against any third party in respect of any infringement of patent, registered design or like instrument of privilege which may now or at any future time be owned by it. However, should Hemisphere elect to take such legal proceedings, at Hemisphere's request, Licensee shall co-operate reasonably with Hemisphere in all legal actions concerning this license of the Software under this Agreement taken against any third party by Hemisphere to protect its rights in the Software. Hemisphere shall bear all reasonable costs and expenses incurred by Licensee in the course of co-operating with Hemisphere in such legal action.
15. **INDEMNIFICATION.** Hemisphere shall be under no obligation or liability of any kind (in contract, tort or otherwise and whether directly or indirectly or by way of indemnity contribution or otherwise howsoever) to the Licensee and the Licensee will indemnify and hold Hemisphere harmless against all or any loss, damage, actions, costs, claims, demands and other liabilities or any kind whatsoever (direct, consequential, special or otherwise) arising directly or indirectly out of or by reason of the use by the Licensee of the Software whether the same shall arise in consequence of any such infringement, deficiency, inaccuracy, error or other defect therein and whether or not involving negligence on the part of any person..
16. **TERMINATION.** Licensee may terminate this Agreement at any time without cause. Hemisphere may terminate this Agreement on 30 days notice to Licensee if Licensee fails to materially comply with each provision of this Agreement unless such default is cured within the 30 days. Any such termination by a party shall be in addition to and without prejudice to such rights and remedies as may be available, including injunction and other equitable remedies. Upon receipt by Licensee of written notice of termination from Hemisphere or termination by Licensee, Licensee shall at the end of any notice period (a) cease using the Software; and (b) return to Hemisphere (or destroy and provide a certificate of a Senior Officer attesting to such destruction) the



Software and all related material and any magnetic or optical media provided to Licensee. The provisions of Sections OWNERSHIP, Hemisphere and its suppliers own all rights, title and interest in and to the Software and related materials, including all intellectual property rights. The Software is licensed to Licensee, not sold. , TRADEMARKS. "Hemisphere GPS", "Outback Guidance", "BEELINE", "Crescent", "Eclipse" and the associated logos are trademarks of Hemisphere. Other trademarks are the property of their respective owners. Licensee may not use any of these trademarks without the consent of their respective owners., WARRANTY. Hemisphere does not warrant the contents of the Software, that the Software will meet Licensee's requirements or that it will be error free. The Software is furnished "AS IS" and without warranty as to the performance or results you may obtain by using the Software. The entire risk as to the results and performance of the Software is assumed by you. Hemisphere does not warrant or guarantee the precision or accuracy of positions obtained when using the Software. The Software is not intended and should not be used as the primary means of navigation or for use in safety of life applications. The potential positioning and navigation accuracy obtainable with the Software as stated in the Software documentation serves to provide only an estimate of achievable accuracy based on specifications provided by the US Department of Defense for GPS positioning and DGPS service provider performance specifications, where applicable. , WARRANTY DISCLAIMER. THE WARRANTIES IN THIS AGREEMENT REPLACE ALL OTHER WARRANTIES, EXPRESS OR IMPLIED. HEMISPHERE MAKES NO REPRESENTATION, WARRANTY OR CONDITION OF ANY KIND TO LICENSEE, WHETHER VERBAL OR WRITTEN AND HEREBY DISCLAIMS ALL REPRESENTATIONS, WARRANTIES AND CONDITIONS OF ANY KIND INCLUDING FITNESS FOR A PARTICULAR PURPOSE, MERCHANTABILITY, ACCURACY, RELIABILITY OR THAT THE USE OF THE SOFTWARE WILL BE UNINTERRUPTED OR ERROR-FREE AND HEREBY DISCLAIMS ALL REPRESENTATIONS, WARRANTIES AND CONDITIONS ARISING AS A RESULT OF CUSTOM, USAGE OR TRADE AND THOSE ARISING UNDER STATUTE., LIMITATION OF LIABILITY. IN NO EVENT WILL HEMISPHERE BE LIABLE TO LICENSEE FOR ANY INCIDENTAL, CONSEQUENTIAL, SPECIAL OR INDIRECT DAMAGES INCLUDING ARISING IN RELATION TO ANY LOSS OF DATA, INCOME, REVENUE, GOODWILL OR ANTICIPATED SAVINGS EVEN IF HEMISPHERE HAS BEEN INFORMED OF THE POSSIBILITY OF SUCH LOSS OR DAMAGE. FURTHER, IN NO EVENT WILL HEMISPHERE'S TOTAL CUMULATIVE LIABILITY HEREUNDER, FROM ALL CAUSES OF ACTION OF ANY KIND, EXCEED THE TOTAL AMOUNT PAID BY LICENSEE TO HEMISPHERE TO LICENSE THE SOFTWARE. THIS LIMITATION AND EXCLUSION APPLIES IRRESPECTIVE OF THE CAUSE OF ACTION, INCLUDING BUT NOT LIMITED TO BREACH OF CONTRACT, NEGLIGENCE, STRICT LIABILITY, TORT, BREACH OF WARRANTY, MISREPRESENTATION OR ANY OTHER LEGAL THEORY AND WILL SURVIVE A FUNDAMENTAL BREACH. Hemisphere will not be liable for any loss or



damage caused by delay in furnishing the Software or any other performance under this Agreement. Hemisphere's entire liability and your exclusive remedies for our liability of any kind (including liability for negligence) for the Software covered by this Agreement and all other performance or non-performance by Hemisphere under or related to this Agreement are to the remedies specified by this Agreement., INDEMNIFICATION. Hemisphere shall be under no obligation or liability of any kind (in contract, tort or otherwise and whether directly or indirectly or by way of indemnity contribution or otherwise howsoever) to the Licensee and the Licensee will indemnify and hold Hemisphere harmless against all or any loss, damage, actions, costs, claims, demands and other liabilities or any kind whatsoever (direct, consequential, special or otherwise) arising directly or indirectly out of or by reason of the use by the Licensee of the Software whether the same shall arise in consequence of any such infringement, deficiency, inaccuracy, error or other defect therein and whether or not involving negligence on the part of any person.. , FORUM FOR DISPUTES. The parties agree that the courts located in Calgary, Alberta, Canada and the courts of appeal there from will have exclusive jurisdiction to resolve any disputes between Licensee and Hemisphere concerning this Agreement or Licensee's use or inability to use the Software and the parties hereby irrevocably agree to attorn to the jurisdiction of those courts. Notwithstanding the foregoing, either party may apply to any court of competent jurisdiction for injunctive relief. and APPLICABLE LAW. This Agreement shall be governed by the laws of the Province of Alberta, Canada, exclusive of any of its choice of law and conflicts of law jurisprudence. herein shall survive the expiry or termination of this Agreement for any reason.

17. **EXPORT RESTRICTIONS.** Licensee agrees that Licensee will comply with all export control legislation of Canada, the United States, Australia and any other applicable country's laws and regulations, whether under the Arms Export Control Act, the International Traffic in Arms Regulations, the Export Administration Regulations, the regulations of the United States Departments of Commerce, State, and Treasury, or otherwise as well as the export control legislation of all other countries.
18. **SOFTWARE COMPONENTS.** The Software may contain third party components. Those third party components may be subject to additional terms and conditions. Licensee is required to agree to those terms and conditions in order to use the Software.
19. **FORCE MAJEURE EVENT.** Neither party will have the right to claim damages as a result of the other's inability to perform or any delay in performance due to unforeseeable circumstances beyond its reasonable control, such as labor disputes, strikes, lockouts, war, riot, insurrection, epidemic, Internet virus attack, Internet failure, supplier failure, act of God, or governmental action not the fault of the non-performing party.



20. **FORUM FOR DISPUTES.** The parties agree that the courts located in Calgary, Alberta, Canada and the courts of appeal there from will have exclusive jurisdiction to resolve any disputes between Licensee and Hemisphere concerning this Agreement or Licensee's use or inability to use the Software and the parties hereby irrevocably agree to attorn to the jurisdiction of those courts. Notwithstanding the foregoing, either party may apply to any court of competent jurisdiction for injunctive relief.
21. **APPLICABLE LAW.** This Agreement shall be governed by the laws of the Province of Alberta, Canada, exclusive of any of its choice of law and conflicts of law jurisprudence.
22. **CISG.** The United Nations Convention on Contracts for the International Sale of Goods will not apply to this Agreement or any transaction hereunder.
23. **GENERAL.** This is the entire agreement between Licensee and Hemisphere relating to the Software and Licensee's use of the same, and supersedes all prior, collateral or contemporaneous oral or written representations, warranties or agreements regarding the same. No amendment to or modification of this Agreement will be binding unless in writing and signed by duly authorized representatives of the parties. Any and all terms and conditions set out in any correspondence between the parties or set out in a purchase order which are different from or in addition to the terms and conditions set forth herein, shall have no application and no written notice of same shall be required. In the event that one or more of the provisions of this Agreement is found to be illegal or unenforceable, this Agreement shall not be rendered inoperative but the remaining provisions shall continue in full force and effect.







www.hemispheregps.com
e-mail: info@hemispheregps.com