
To: A222 Users **Date:** March 15, 2019
From: Global Customer Care **Subject:** A222 GNSS Firmware v.59Aa07

Product Affected:
Outback A222

Scope:
A222 GNSS firmware v.59Aa07 is available for all A222 users. This version includes an update for ATLAS services.

GNSS Firmware Loading Instructions:

1. Extract “A222 GNSS Firmware Update” folder to your computer and connect your A222 to your computer via a Serial to USB cable. Do **not** power on A222.



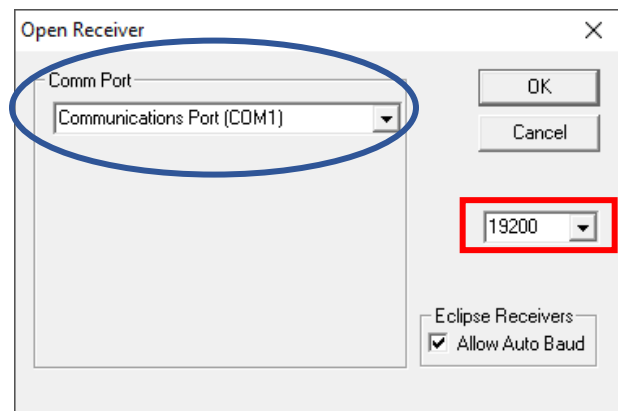
2. Start the Right Arm Program by double clicking the RightARM icon.



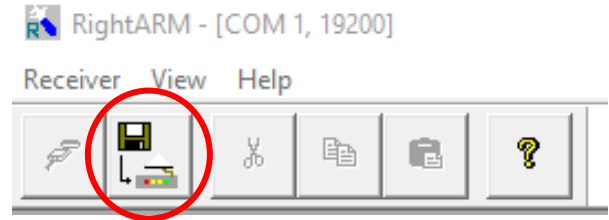
3. Press the connect button in the “RightARM” program.



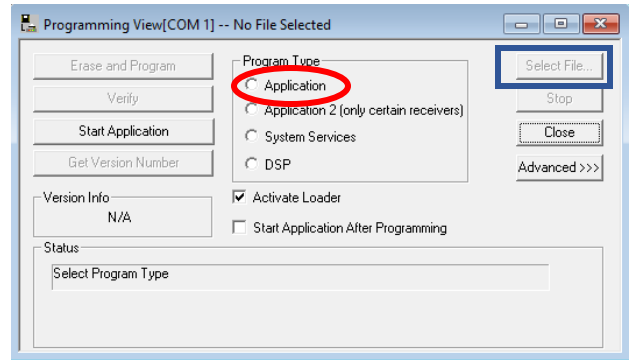
4. Select the “Comm Port” the receiver is connected to, (circle) and then select the correct **baud rate** of the receiver (rectangle) and press “OK”. This should be changed to 19200 if it isn’t already.



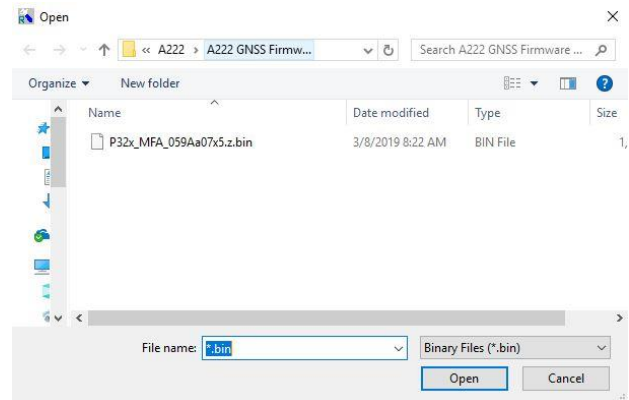
- Next, select the “Erase and Program” button.



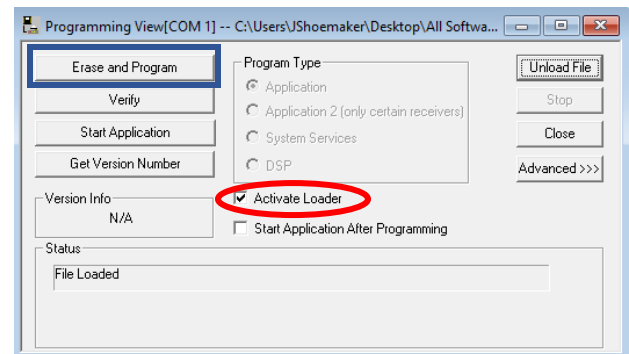
- Choose “Application” (circle) and then press “Select File”. (rectangle)



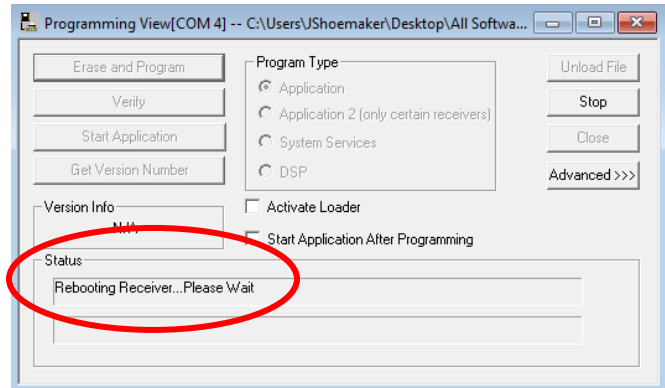
- Choose the “P32x_MFA_059Aa07x5.bin” file from the list and press “Open”.



- Ensure the “Active Loader” is checked (circle) and press “Erase and Program” (rectangle).

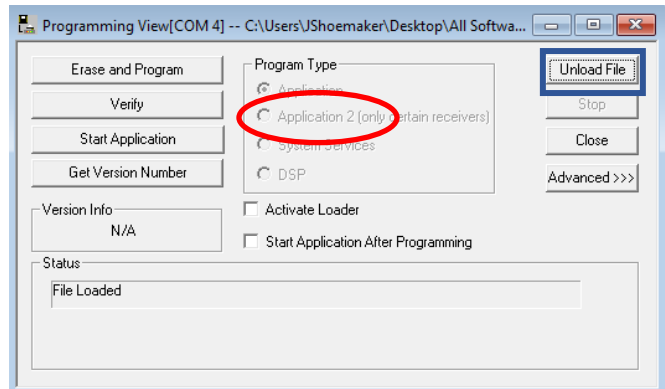


9. Once the status bar shows “**Rebooting Receiver...Please Wait**” (circle), turn on power to A222.

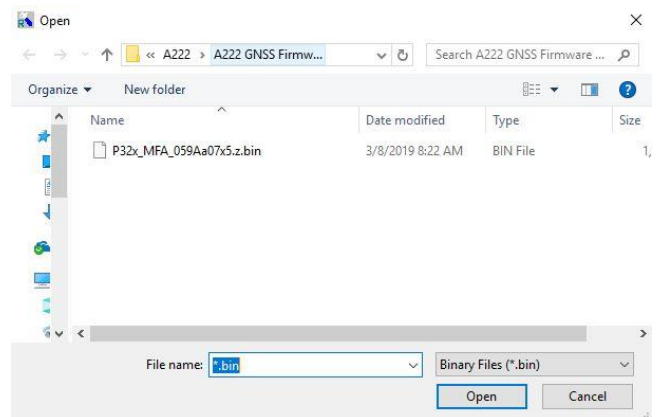


10. Now the load will begin, and the Status bar will show the load progress until complete.

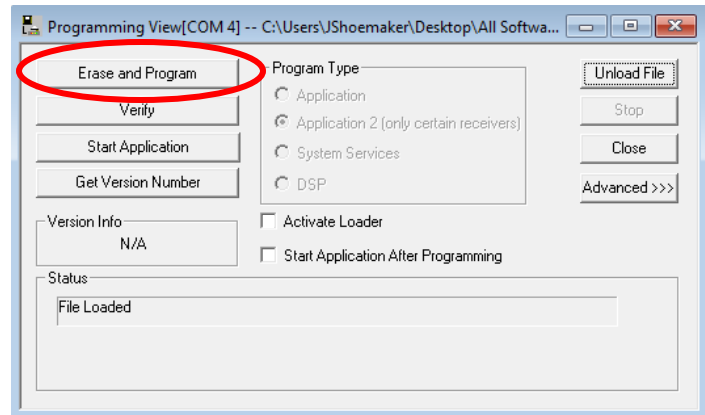
11. Once finished, select “**Unload File**” (rectangle), select the “**Application 2**” slot (circle), and press “Select File”.



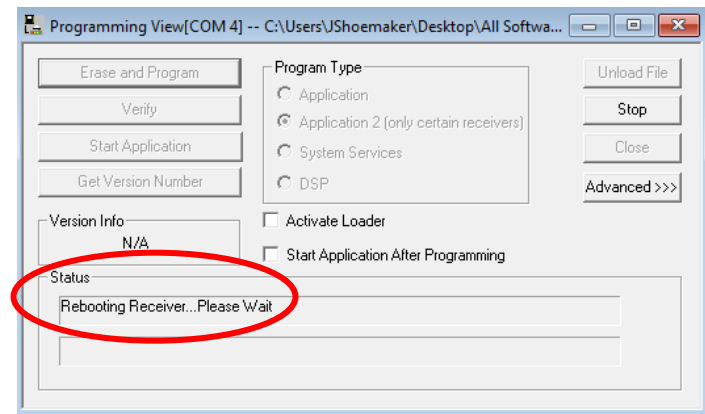
12. Select the “P32x_MFA_059Aa07x5.bin” file, and press “Open”.



13. Press “Erase and Program”.



14. Now the load will begin, and the Status bar will show the load progress until complete.



15. Once update is complete, close program and turn off A222.

16. To ensure the loads were successful, connect A222 to a Rebel:

1. Menu
2. Diagnostics
3. GPS
4. Receiver Status
5. GPS Firmware