

**To:** A220/A221™ Users  
**From:** Technical Support, Agriculture Business Unit  
**Date:** May 26, 2011  
**Subject:** A220/A221 GPS Firmware ver. Qb1

**Product Affected:** Outback A220/A221™

**Scope:**

A220 GPS firmware v. 12QB1 (RTK rover), 15Qb1 (WAAS, RTK Base) and 49Qb1 (OmniSTAR) are required for all A220/A221 users. These versions include a number of improvements and allow for operation of the L400 Long Range RTK radios.

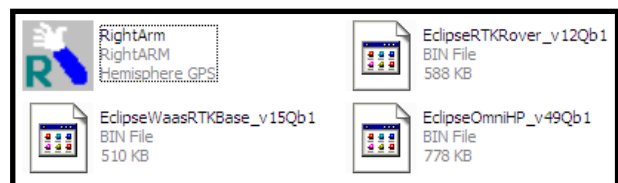
**Improvements:**

1. Provides a more robust base station position solution for improved repeatability by only utilizing horizontal location for detecting base station movement from the reference point.
2. Improved Dual Frequency RTK re-acquisition performance after loss of RTK.
3. Improves robustness of RTK during long term continuous operation by preventing an accumulation of height biases in the base solution over multiple days of operation
4. Maintains RTK lock longer under difficult environmental conditions improving accuracy where differential correctors may temporarily be lost.

In order to take full advantage of the A220/A221 smart antenna, please visit [www.outbackguidance.com](http://www.outbackguidance.com) and navigate to the Support>Download Center for a free download of the A220 Qb1 version firmware. For a successful update to the A220/A221, please follow the instructions listed below.

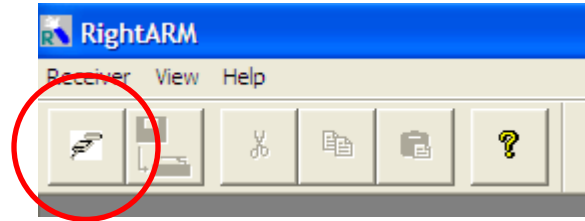
**Instructions:**

**Step 1.** Copy “RightArm” and all three GPS firmware versions to your computer, and then start the “RightArm” program.

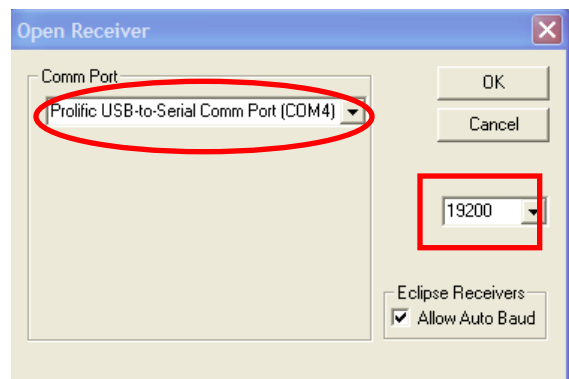


**Step 2.** Connect your A220/A221 to your computer via a serial to USB cable and power on the receiver.

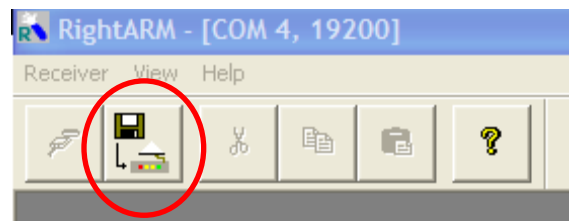
**Step 3.** Press the connect button in the “RightArm” program.



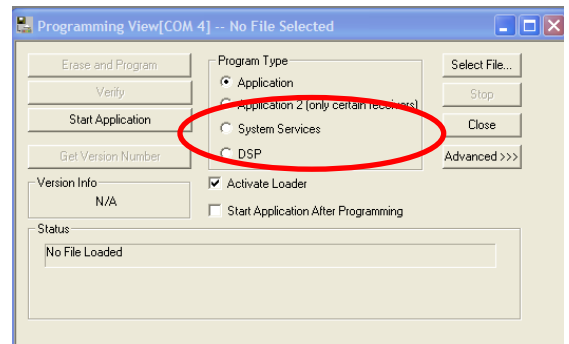
**Step 4.** Select the “Comm Port” the receiver is connected to, (circle) and then select the correct baud rate of the receiver (rectangle) and press “OK”.



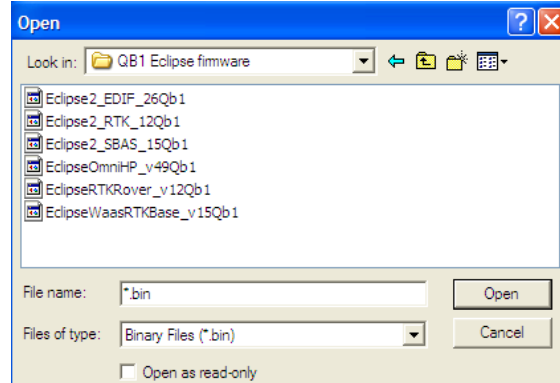
**Step 5.** Next, select the “Erase and Program” button.



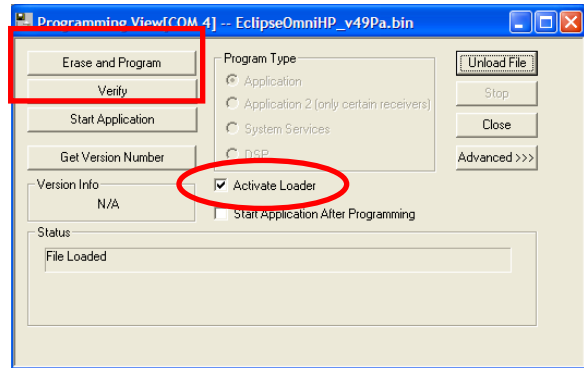
**Step 6.** Choose which Application you would like to update (Only one application can be programmed at a time.) and then press “Select File.”



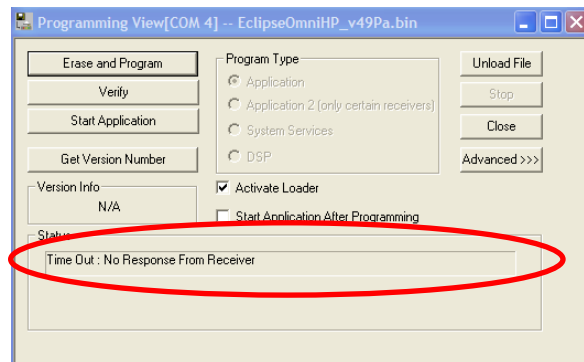
**Step 7.** Choose the appropriate Firmware version from the list and press “Open”.



**Step 8.** Ensure that “Activate Loader” is checked (circle) and press “Erase and Program” (rectangle)



**Step 9.** Now the load will begin, and the Status bar will show the load progress until complete.



**Step 10.** Once finished, a “Load Complete” window will pop up. Repeat steps 6 through 9 for the second Application if necessary. When all intended applications have been updated, reboot the receiver before use.

- Step 11.** To ensure the loads were successful, check the version with the onboard menu of the A221, or the “Remote Control” program for the A220. In both cases, you can check the version by scrolling to “System Setup”, and then to “Display Apps.”