

To: Outback S-Lite™ Owners
From: Technical Support, Ground Ag
Date: June 3, 2009
Subject: Application ver. 1.5 Upgrade Loading Instructions
Reference #: P200911

Product Affected: Outback S-Lite

Scope: This service bulletin provides proper loading procedures for updating the application software to version 1.5 on an Outback S-Lite.

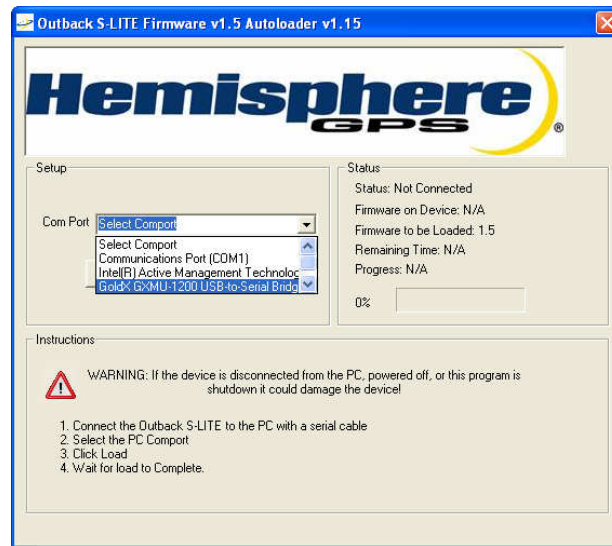
Description of Changes: This version of software includes multiple enhancements and fixes for the Outback S-Lite.

The main enhancements and fixes in version 1.5 are:

- Guidance isn't lost after a large number of passes
- Addressed an e-Dif countdown issue
- Added language support for Chinese, Latvian, Dutch, Ukrainian, Slovakian, Romanian, and Lithuanian

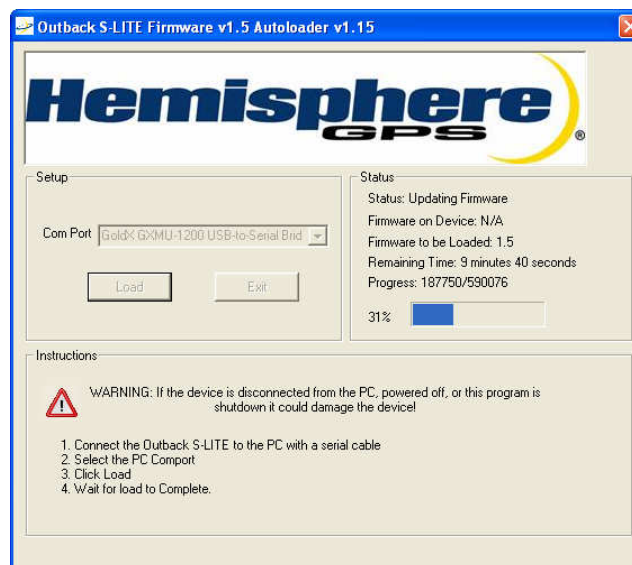
Instructions:

- Step 1** Copy the "AutoloaderS2_V1_5" to your computer.
- Step 2** Press and hold the down arrow button while powering up the S-Lite.
- Step 3** If the Outback S-Lite shows *Load S2 1.4*, **STOP**, turn off the unit and proceed with Step 10. The unit will cease to operate if it is updated using the S2 loader. If the Outback S-Lite unit shows *Load SLite 1.4*, turn off the unit and proceed with Step 4.
- Step 4** Power up the Outback S-Lite and connect the Outback S-Lite to your computer with a serial cable.
- Step 5** Open the Autoloader file and select your serial port from the "Com Port" list.



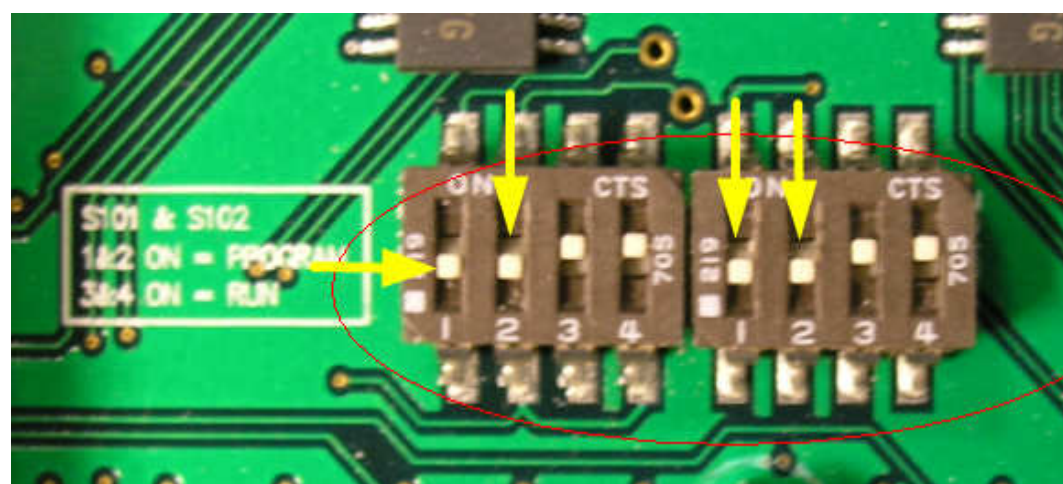
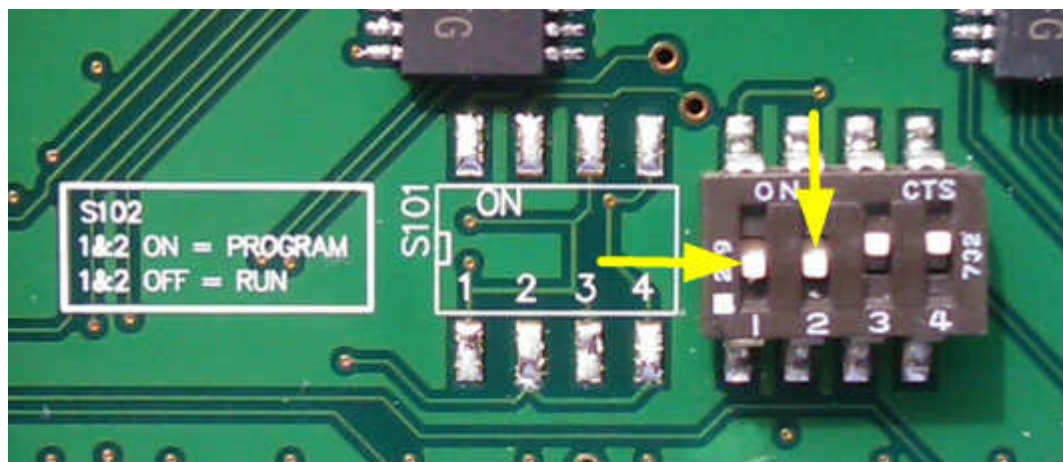
Step 6 Select “Load”.

Step 7 Wait for the load to complete. The status box displays percent of the load complete and time remaining. (Estimated install time is 11 – 12 minutes).



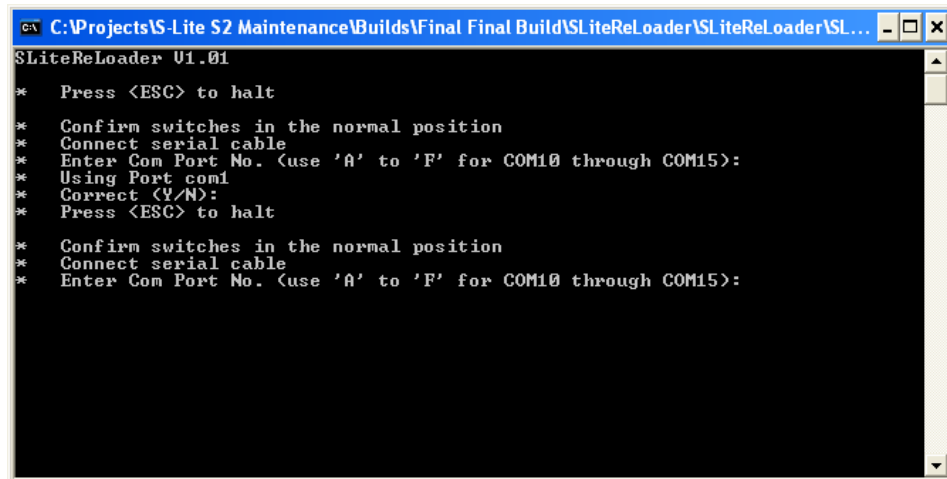
Step 8 The Outback S-Lite will automatically reboot after loading. Ensure the load has taken effect by checking the software version on the console.

- Step 9** Before beginning a new job, select “Reset Defaults” from the service menu. Refer to page 16 of the Outback S-Lite User Guide for instructions. The update is complete; do not proceed any further in the instructions.
- Step 10** Copy the “SLiteReloader.zip” file to the C:\ directory.
- Step 11** Unzip the file in the C:\ directory. A SLiteReloader folder will be created containing 4 files.
- Step 12** With a screwdriver, remove the side panel (the side opposite the connections) and the back panel of the Outback S-Lite unit.
- Step 13** Locate a series of 4 switches and verify switches 1 & 2 are in the down position. Depending on the board, there may be one or two sets of switches.



- Step 14** With the side and back panel still off, power up the Outback S-Lite and connect the Outback S-Lite to your computer with a serial cable.

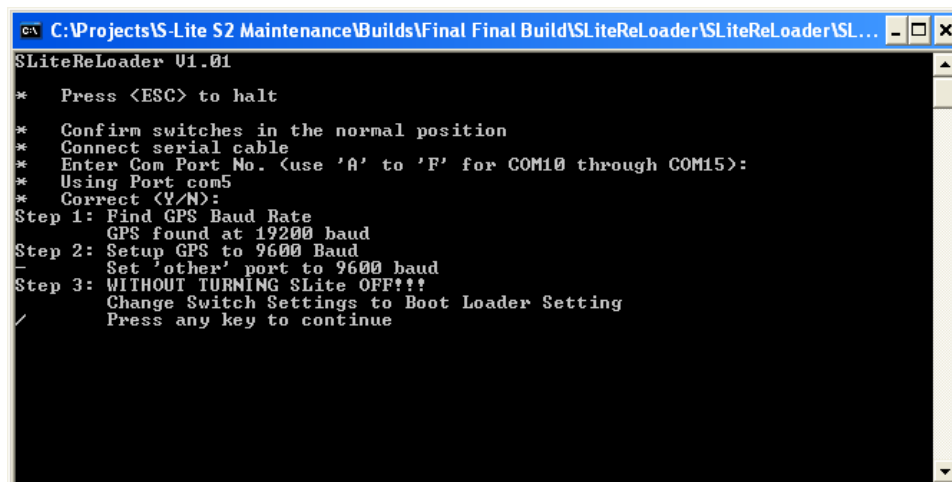
- Step 15** Launch the Reloader application by double clicking on the SLiteReLoader application file.
- Step 16** Enter the com port being used for your serial cable and enter “y” if this is the correct com port.



```

C:\Projects\S-Lite S2 Maintenance\Builds\Final Final Build\SLiteReLoader\SLiteReLoader\SL...
SLiteReLoader U1.01
*   Press <ESC> to halt
*   Confirm switches in the normal position
*   Connect serial cable
*   Enter Com Port No. (use 'A' to 'F' for COM10 through COM15):
*   Using Port com1
*   Correct (Y/N):
*   Press <ESC> to halt
*   Confirm switches in the normal position
*   Connect serial cable
*   Enter Com Port No. (use 'A' to 'F' for COM10 through COM15):
  
```

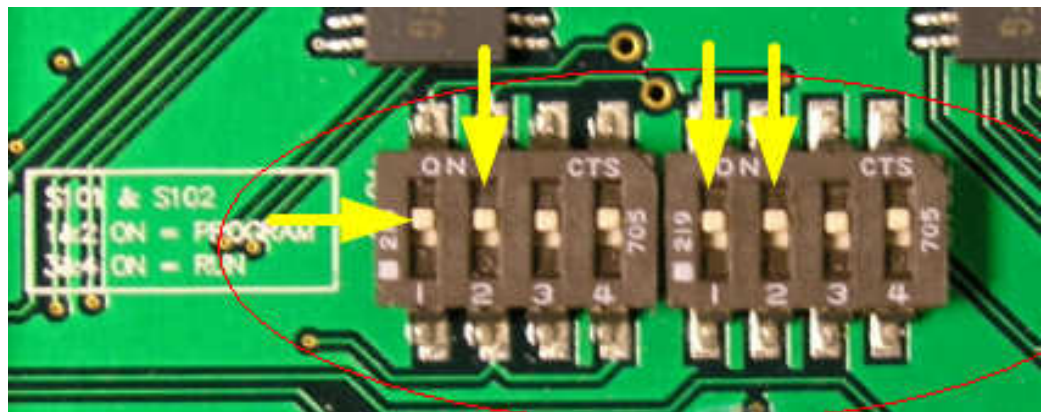
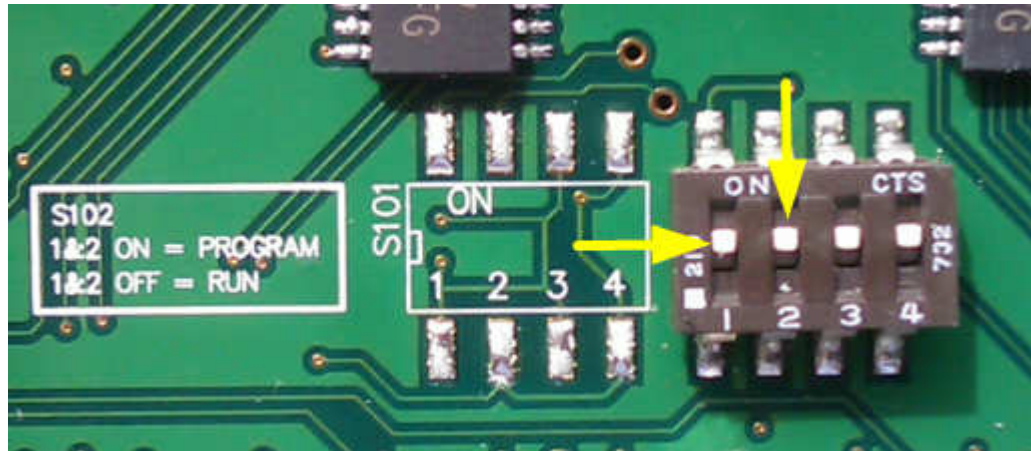
- Step 17** The application will prompt to change the switch settings to boot loader setting. Do not turn the Outback S-Lite off during this step.



```

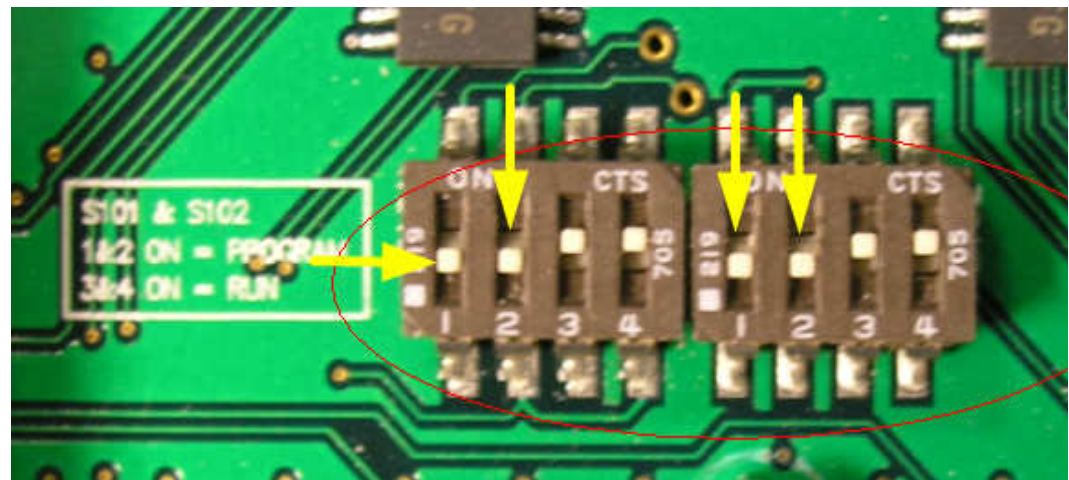
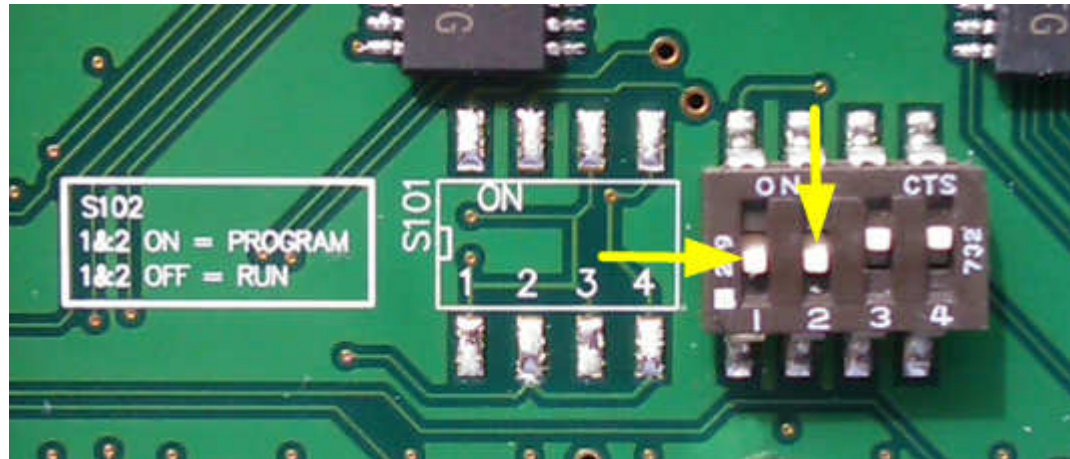
C:\Projects\S-Lite S2 Maintenance\Builds\Final Final Build\SLiteReLoader\SLiteReLoader\SL...
SLiteReLoader U1.01
*   Press <ESC> to halt
*   Confirm switches in the normal position
*   Connect serial cable
*   Enter Com Port No. (use 'A' to 'F' for COM10 through COM15):
*   Using Port com5
*   Correct (Y/N):
Step 1: Find GPS Baud Rate
GPS found at 19200 baud
Step 2: Setup GPS to 9600 Baud
Set 'other' port to 9600 baud
Step 3: WITHOUT TURNING SLite OFF!!!
Change Switch Settings to Boot Loader Setting
Press any key to continue
  
```

- Step 18** Locate the series of 4 switches again on the back of the Outback S-Lite unit and flip switches 1 and 2 to the On/Program position (push them up).



- Step 19** Press the Enter key to continue. A new boot loader specific to the Outback S-Lite and the software application will install. Do not turn the unit off during this process. The percent complete will be displayed. (Estimated time: approximately 28 minutes)

- Step 20** Once the install is 100% complete, locate the set of switches on the back of the Outback S-Lite unit. Set switches 1 and 2 back to the Off/Run position (push them down).



- Step 21** Using a screwdriver, replace the back panel and end plates on the Outback S-Lite.
- Step 22** Before beginning a new job, select "Reset Defaults" from the service menu. Refer to page 16 of the Outback S-Lite User Guide for instructions.