

# Installation Guide

Installation Kit: 911-6101-10



**AGCO:**

9330  
9340  
9345  
9365  
9435  
9635

**Case IH:**

8860  
8870  
8880

**Challenger:**

SP115B  
SP115C  
SP185B  
SP185C  
SP85B

**Massey Ferguson:**

9220  
9420  
9430  
9435  
9635  
9225  
9435

**Hesston:**

8450  
8860  
9230  
9240  
9260  
8550S  
9230S



# Introduction

---

The procedures outlined in this guide provide the basic installation procedure for the ESi<sup>2</sup> on the machines specified on the front cover of this guide. If you do not see your machine listed, contact customer support for further instruction. The kit components and corresponding install instructions are designated for each applicable machine make and model and may not be used on undesignated machine models.

## **Review Installation Kit Contents**

Kit contents are outlined in the ESi<sup>2</sup> installation section on pages 8&9. Read all applicable installation instructions for your machine's model and ensure that all required kit components are present before beginning the installation.

**NOTE:** Due to manufacturing processes outside of Outback Guidance's control, the installer may have to adapt this kit to your distinct situation.

## **Read and Follow All Safety Messages**

- Refer to the safety manual for the machine that the ESi<sup>2</sup> is being installed on for operating age and precautions.
- Prior to installing and operating the ESi<sup>2</sup>, read and understand all safety precautions as outlined in this guide
- Store this guide and all related safety information with related machine manuals for future reference.

## **Safety Information and Warnings\***

- ESi<sup>2</sup> is NOT designed to replace the machine's operator and is designed as a driving aid for use in precision agriculture applications.
- ESi<sup>2</sup> is NOT intended for use on roadways and should remain disengaged at all times when traveling on roadways.
- ESi<sup>2</sup> does NOT control the speed of the machine and a human operator is required to manually maintain a safe operating speed.
- ESi<sup>2</sup> does NOT avoid obstacles. To prevent human, machine and property injury a human operator is required to operate the machine at all times.
- Do NOT allow anyone to operate without instructions.
- At all times the driver is fully responsible for the safe operation of the vehicle.

\* The safety warnings contained in this installation guide are not meant to be an exhaustive list of potential hazards.

# Introduction

---

- To ensure peak performance, ESi<sup>2</sup> should only be installed after a thorough machine inspection has been conducted. The contents of this kit and ESi<sup>2</sup> are not intended to replace preventative and or needed maintenance. To avoid bodily and machine injury, follow the machine preparation checklist below:
  - ⇒ Inspect steering linkage: Machine should drive in a straight line without manual correction
  - ⇒ Turn off machine and power-off all electronic gauges, monitors and external devices when installing or performing maintenance on the ESi<sup>2</sup>
  - ⇒ Park machine on a clean and level surface
  - ⇒ Lower all implements and headers to the ground
  - ⇒ Apply the parking break and chock wheels
  - ⇒ Inspect any drilling and/or cutting sites to ensure no electrical wiring damage will be incurred

# Machine Preparation

---

Make sure your machine's steering column is similar to the one pictured to the right.



Remove plastic cover from center of steering wheel.



## Machine Preparation

---

Follow manufacturer's guide to remove steering wheel. SAVE steering wheel nut as it will be reused later in this installation.

***\*NOTE: Consult your equipment dealer if you are unsure of the correct procedure for removing the steering wheel.***





# Machine Preparation

---

**NOTE:** Machine may have 1. METAL COVERED steering cover or 2. PLASTIC COVERED steering cover.

Determine which cover style your machine has and follow the directions below.

## 1. METAL COVER:

Remove both screws and **SAVE** for reuse in installation.

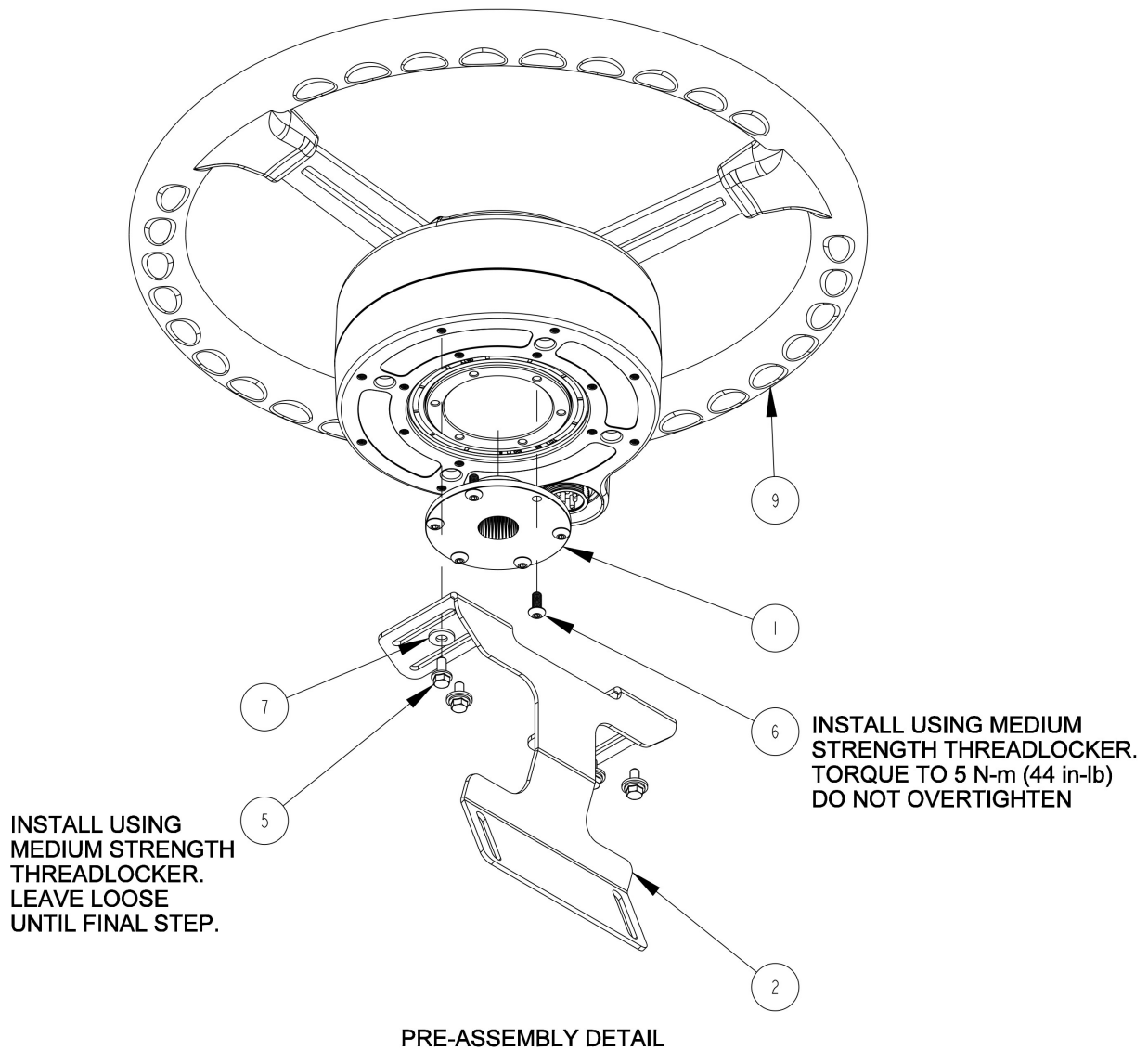


## 2. PLASTIC COVER:

Remove both screws and **DISCARD** them.



# ESi<sup>2</sup> Installation

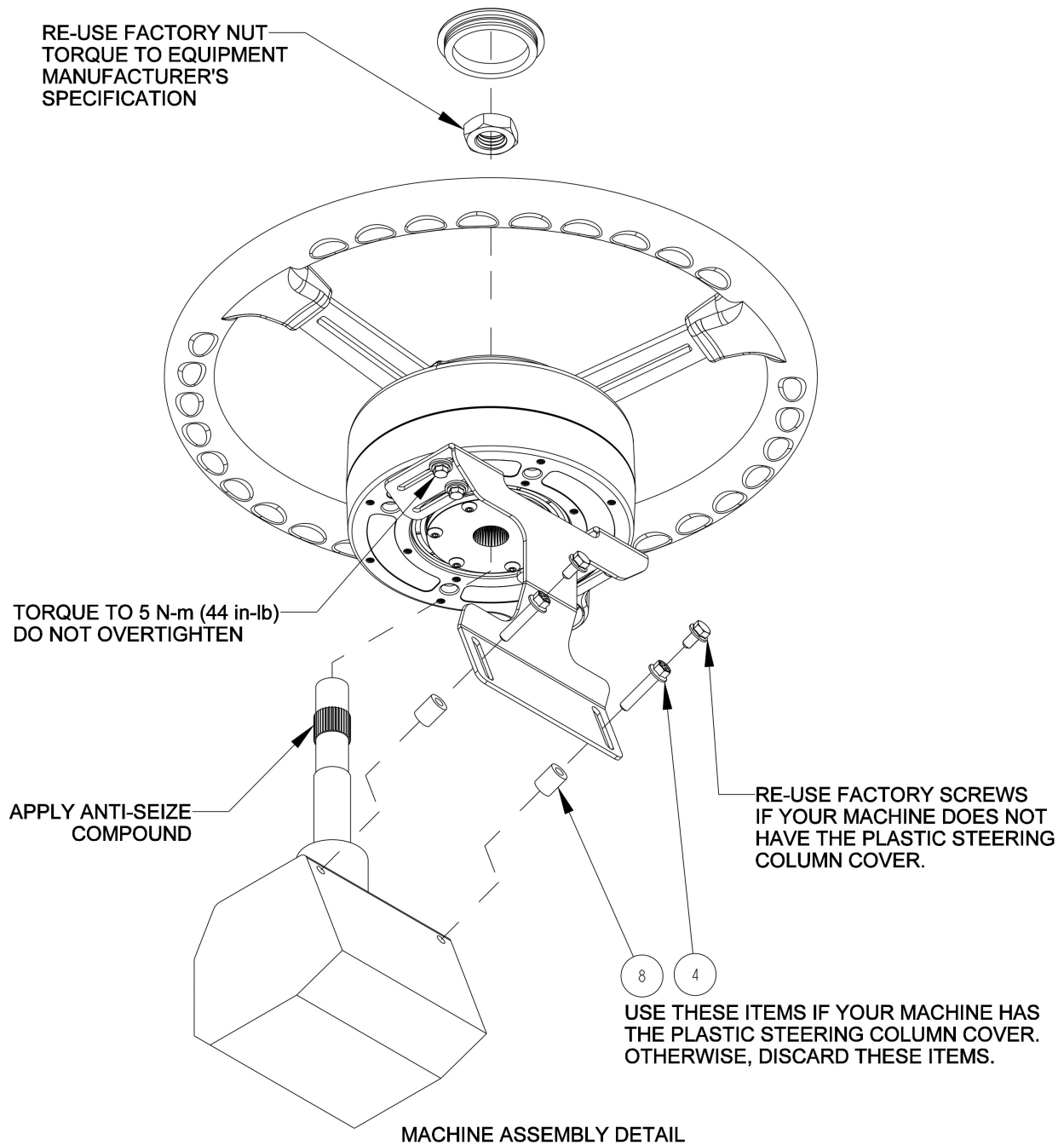


## ASSEMBLY INSTRUCTIONS:

1. PRE-ASSEMBLE ITEMS SHOWN TO WHEEL MOTOR
2. PLACE ASSEMBLY ON STEERING SHAFT AND RE-INSTALL STEERING SHAFT NUT
3. ADJUST BRACKET TO FIT TO THE STEERING COLUMN AND MOTOR
4. TIGHTEN SCREWS ATTACHING BRACKET TO STEERING COLUMN
5. TIGHTEN SCREWS ATTACHING BRACKET TO BOTTOM OF MOTOR



# ESi<sup>2</sup> Installation



ITEM	QTY	PART NUMBER	DESCRIPTION	NOTES
1	1	604-0074-10	SPLINE ADAPTER- ESI2, 36T x .875 MAJOR x .180/.870 OFFSET	
2	1	640-0185-10	BRKT, AR, ESI2, AGCO SWATHER	
3	1	675-0126-000	THREADLOCKER LOCTITE 242 SINGLE USE	NOT SHOWN
4	2	675-1307-000	SCREW, 1/4-20 X 1-1/4, HEX FLANGE	
5	4	675-1345-10	SCREW, M5-0.8 X 12mm, HEX FLANGE	
6	6	675-1351-10	SCREW, M5-0.8 X 12mm, BUTTON HEAD	
7	4	678-1148-10	WSHR, FLAT, #12 SAE .250 ID X .562 OD	
8	2	680-1144-10	SPACER, 1/4 X 1/2 X 5/8, NYLON	
9	1	910-4024-10	ESI2 ASM, PACKAGED	

## ESi<sup>2</sup> Installation Completed

---

ESi<sup>2</sup> wheel successfully installed.



## Install Completion Checklist

---

- Ensure steering wheel turns freely and anti-rotation brackets do not contact the spline adapter.
- Check, and if needed, tighten anti-rotation brackets to eliminate excess movement. Loose anti-rotation brackets can cause poor steering performance.
- For steering ECU installation instructions please refer to the ECU installation guide that came with your installation kit.