

Installation Guide

Installation Kit: 911-6108-10

Articulated Tractors:

Steiger			Case IH	Versatile
9110	Cougar III ST-251	Panther III ST-310	9110	835
9130	Cougar III ST-270	Panther III ST-320	9130	836
9150	Cougar III ST-280	Panther III ST-325	9150	846
9170	Cougar IV CM-250	Panther III ST-350	9170	855
9180	Cougar IV CM-280	Panther IV CM-325	9180	856
9190	Cougar IV CS-280	Panther IV CM-360	9190	875
Bearcat 1000	Cougar IV KM-280	Panther IV CS-325	9210	876
Bearcat III PT-225	Cougar IV KS-280	Panther IV CS-360	9230	895
Bearcat III ST-220	Cougar KR-1225	Panther IV KM-325	9250	936
Bearcat III ST-225	Cougar KR-1280	Panther IV KM-360	9270	945
Bearcat IV CM-225	CU-280	Panther IV KS-325	9280	946
Bearcat IV KM-225	CU-325	Panther IV KS-360	9290	955
CA-280	CU-360	Panther IV SM-325	9310	956
CA-325	Lion 1000	Panther KP-1325	9330	976
CA-360	Panther 1000	Panther KP-1360	9350	1150
Cougar CR-1225	Panther CP-1325	Panther KP-1400	9370	1156
Cougar CR-1280	Panther CP-1360	Puma 1000	9380	
Cougar III PT-250	Panther CP-1400	Tiger III ST-450	9390	
Cougar III PT-270	Panther III PT-350	Tiger III ST-470		
Cougar III PTA-251	Panther III PTA-296	Tiger IV KP-525		
Cougar III PTA-270	Panther III PTA-297	Wildcat 1000		
Cougar III PTA-280	Panther III PTA-310	Wildcat III ST-210		
Cougar III ST-250	Panther III PTA-325			

Track Tractors:

CAT

65C
65D
65E
70C
75C
75D
75E
85C
85D
85E
95E

Introduction

The procedures outlined in this guide provide the basic installation procedure for the ESi² on the machines specified on the front cover of this guide. If you do not see your machine listed, contact customer support for further instruction. The kit components and corresponding install instructions are designated for each applicable machine make and model and may not be used on undesignated machine models.

Review Installation Kit Contents

Kit contents are outlined in the ESi² installation section on pages 8 and 9. Read all applicable installation instructions for your machine's model and ensure that all required kit components are present before beginning the installation.

NOTE: Due to manufacturing processes outside of Outback Guidance's control, the installer may have to adapt this kit to your distinct situation.

Read and Follow All Safety Messages

- Refer to the safety manual for the machine that the ESi² is being installed on for operating age and precautions.
- Prior to installing and operating the ESi², read and understand all safety precautions as outlined in this guide
- Store this guide and all related safety information with related machine manuals for future reference.

Safety Information and Warnings*

- ESi² is NOT designed to replace the machine's operator and is designed as a driving aid for use in precision agriculture applications.
- ESi² is NOT intended for use on roadways and should remain disengaged at all times when traveling on roadways.
- ESi² does NOT control the speed of the machine and a human operator is required to manually maintain a safe operating speed.
- ESi² does NOT avoid obstacles. To prevent human, machine and property injury a human operator is required to operate the machine at all times.
- Do NOT allow anyone to operate without instructions.
- At all times the driver is fully responsible for the safe operation of the vehicle.

* The safety warnings contained in this installation guide are not meant to be an exhaustive list of potential hazards.

Introduction

- To ensure peak performance, ESi² should only be installed after a thorough machine inspection has been conducted. The contents of this kit and ESi² are not intended to replace preventative and or needed maintenance. To avoid bodily and machine injury, follow the machine preparation checklist below:
 - ⇒ Inspect steering linkage: Machine should drive in a straight line without manual correction
 - ⇒ Turn off machine and power-off all electronic gauges, monitors and external devices when installing or performing maintenance on the ESi²
 - ⇒ Park machine on a clean and level surface
 - ⇒ Lower all implements and headers to the ground
 - ⇒ Apply the parking break and chock wheels
 - ⇒ Inspect any drilling and/or cutting sites to ensure no electrical wiring damage will be incurred

Machine Preparation

Push in on the center cap and rotate it either right or left to remove.



Remove the 3 screws that hold the round metal disc to the steering wheel.

Discard the metal disc and the screws.



Machine Preparation

Remove and **Discard** the 2 screws and the telescoping actuator from the center of the wheel.



Remove and **Discard** the telescoping adjustment lever by sliding it out of the slot on the side of the steering column.



Machine Preparation

Remove the nut holding the steering wheel onto the shaft.

SAVE the nut as it will be used later in this installation.

Following the manufacturer's recommended procedure remove the steering wheel.

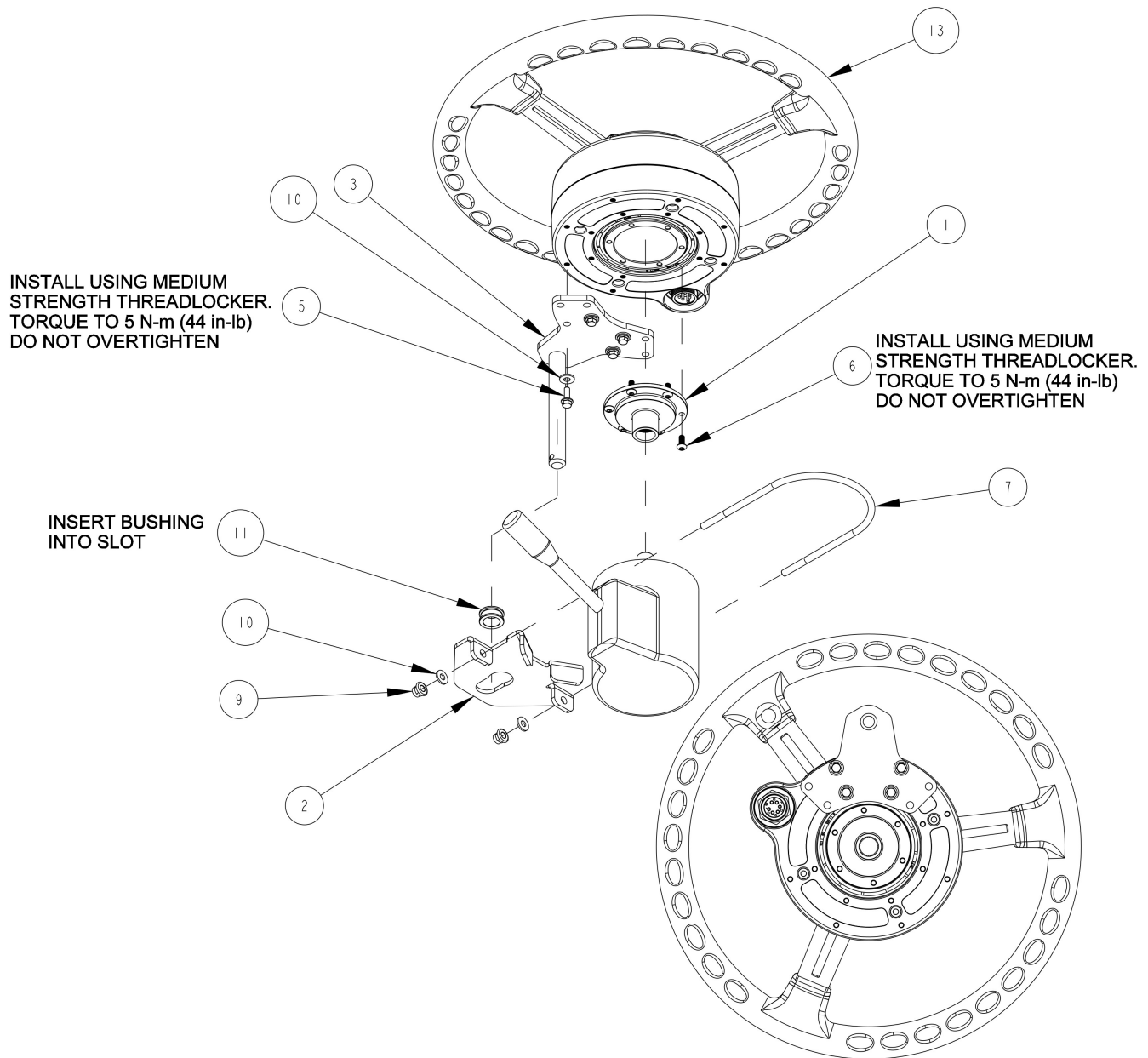
****NOTE: Consult your equipment dealer if you are unsure of the correct procedure for removing the steering wheel.***



Steering column is ready for ESi² Installation.



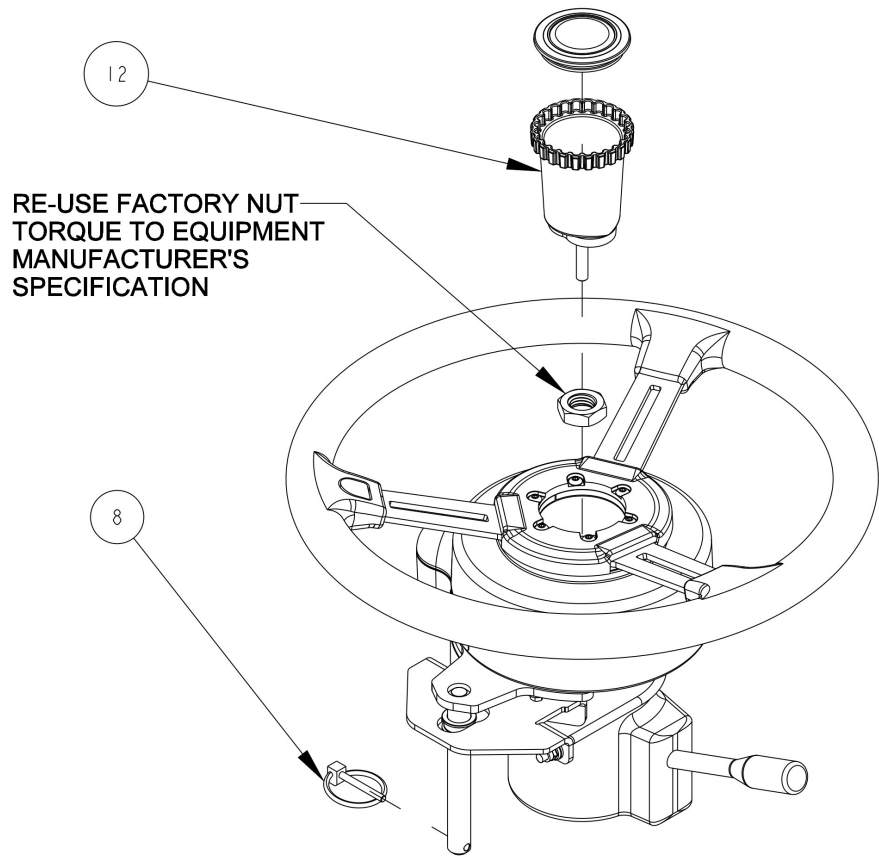
ESi² Installation



ASSEMBLY INSTRUCTIONS:

1. PRE-ASSEMBLE SPLINE ADAPTER AND T-BAR TO WHEEL MOTOR.
2. ASSEMBLE THE BRACKET AND U-BOLT TO THE STEERING COLUMN.
3. INSERT BUSHING INTO SLOT IN BRACKET.
4. APPLY ANTI-SIEZE COMPOUND TO STEERING SHAFT SPLINES.
5. PLACE ASSEMBLY ON STEERING SHAFT AND RE-INSTALL STEERING SHAFT NUT.
6. INSTALL TELESCOPING ACTUATOR KNOB.
7. INSTALL RETAINING PIN IN T-BAR.
8. ROTATE THE WHEEL A FULL TURN TO ENSURE THAT THERE IS NO INTERFERENCE BETWEEN THE BRACKETS AND SPLINE ADAPTER, OR ANY MOVING PARTS AND MACHINE CONTROLS.

ESi² Installation



ITEM	QTY	PART NUMBER	DESCRIPTION	NOTES
1	1	604-0072-10	SPLINE ADAPTER- ESI2, 36T x .701 MAJOR x 1.270 OFFSET	
2	1	640-0186-10	BRACKET, ESI2, U-BOLT, 4.00 ID	
3	1	640-0187-10	T-BAR, EXTENDED, ESI2	
4	1	675-0126-000	LOCTITE 242 MEDIUM STRENGTH THREADLOCKER	NOT SHOWN
5	4	675-1348-10	SCREW, M5-0.8 X 16mm, HEX FLANGE	
6	6	675-1351-10	SCREW, M5-0.8 X 12mm, BUTTON HEAD	
7	1	675-2074-000	U-BOLT, 4.31"	
8	1	676-0037-000	RETAINING PIN	
9	2	676-1089-000	LOCKNUT, M6X1.0	
10	6	678-1148-10	WASHER, #12 SAE .250 ID X .562 OD	
11	1	699-0027-01	BUSHING, SPHERICAL	
12	1	720-0081-10	TELESCOPING ACTUATOR KNOB ASSEMBLY, 5/16", ESI2	
13	1	910-4024-10	ESI2 ELECTRIC STEERING WHEEL	

ESi² Installation Completed

ESi² wheel successfully installed



Install Completion Checklist

- Ensure steering wheel turns freely and anti-rotation brackets do not contact the spline adapter.
- Check, and if needed, tighten anti-rotation brackets to eliminate excess movement. Loose anti-rotation brackets can cause poor steering performance.
- For steering ECU installation instructions please refer to the ECU installation guide that came with your installation kit.