

# Installation Guide

Installation Kit: 911-6111-10

---

## 2WD/MFWD Tractors:

### AGCO Allis

9130  
9150  
9170  
9190  
9435  
9455  
9630  
9635  
9650  
9655  
9670  
9675  
9690  
9695  
9815

### White

120  
125  
145  
170  
195  
6085  
6105  
6124  
6125  
6150  
6144  
6145  
6175  
6195  
6215

### Duetz-Allis

9130  
9150  
9170  
9190

---

## Combines:

### Gleaner

R42  
R52  
R62  
R72  
C62

### Massey Ferguson

8680

### White

2500  
2600

# Introduction

---

The procedures outlined in this guide provide the basic installation procedure for the ESi<sup>2</sup> on the machines specified on the front cover of this guide. If you do not see your machine listed, contact customer support for further instruction. The kit components and corresponding install instructions are designated for each applicable machine make and model and may not be used on undesignated machine models.

## **Review Installation Kit Contents**

Kit contents are outlined in the ESi<sup>2</sup> installation section on pages 6 and 7. Read all applicable installation instructions for your machine's model and ensure that all required kit components are present before beginning the installation.

**NOTE:** Due to manufacturing processes outside of Outback Guidance's control, the installer may have to adapt this kit to your distinct situation.

## **Read and Follow All Safety Messages**

- Refer to the safety manual for the machine that the ESi<sup>2</sup> is being installed on for operating age and precautions.
- Prior to installing and operating the ESi<sup>2</sup>, read and understand all safety precautions as outlined in this guide
- Store this guide and all related safety information with related machine manuals for future reference.

## **Safety Information and Warnings\***

- ESi<sup>2</sup> is NOT designed to replace the machine's operator and is designed as a driving aid for use in precision agriculture applications.
- ESi<sup>2</sup> is NOT intended for use on roadways and should remain disengaged at all times when traveling on roadways.
- ESi<sup>2</sup> does NOT control the speed of the machine and a human operator is required to manually maintain a safe operating speed.
- ESi<sup>2</sup> does NOT avoid obstacles. To prevent human, machine and property injury a human operator is required to operate the machine at all times.
- Do NOT allow anyone to operate without instructions.
- At all times the driver is fully responsible for the safe operation of the vehicle.

\* The safety warnings contained in this installation guide are not meant to be an exhaustive list of potential hazards.

# Introduction

---

- To ensure peak performance, ESi<sup>2</sup> should only be installed after a thorough machine inspection has been conducted. The contents of this kit and ESi<sup>2</sup> are not intended to replace preventative and or needed maintenance. To avoid bodily and machine injury, follow the machine preparation checklist below:
  - ⇒ Inspect steering linkage: Machine should drive in a straight line without manual correction
  - ⇒ Turn off machine and power-off all electronic gauges, monitors and external devices when installing or performing maintenance on the ESi<sup>2</sup>
  - ⇒ Park machine on a clean and level surface
  - ⇒ Lower all implements and headers to the ground
  - ⇒ Apply the parking break and chock wheels
  - ⇒ Inspect any drilling and/or cutting sites to ensure no electrical wiring damage will be incurred

# Install Guide Index

---

This installation guide covers multiple machine types. Refer to the index below to find the section that applies to your machine.

---

## Install #1

### AGCO 2WD/MFWD Tractors:

For machine specific installation instructions start at page 5.



## Install #2

### AGCO Combines:

For machine specific installation instructions start at page 9.



## Install #1

### AGCO 2WD/MFWD Tractors

---

Remove the steering wheel center cap and the plastic button used for telescoping the steering column.

Remove the nut holding the steering wheel onto the shaft.

**SAVE** the nut as it will be used later in this installation.

Following the manufacturer's recommended procedure remove the steering wheel.

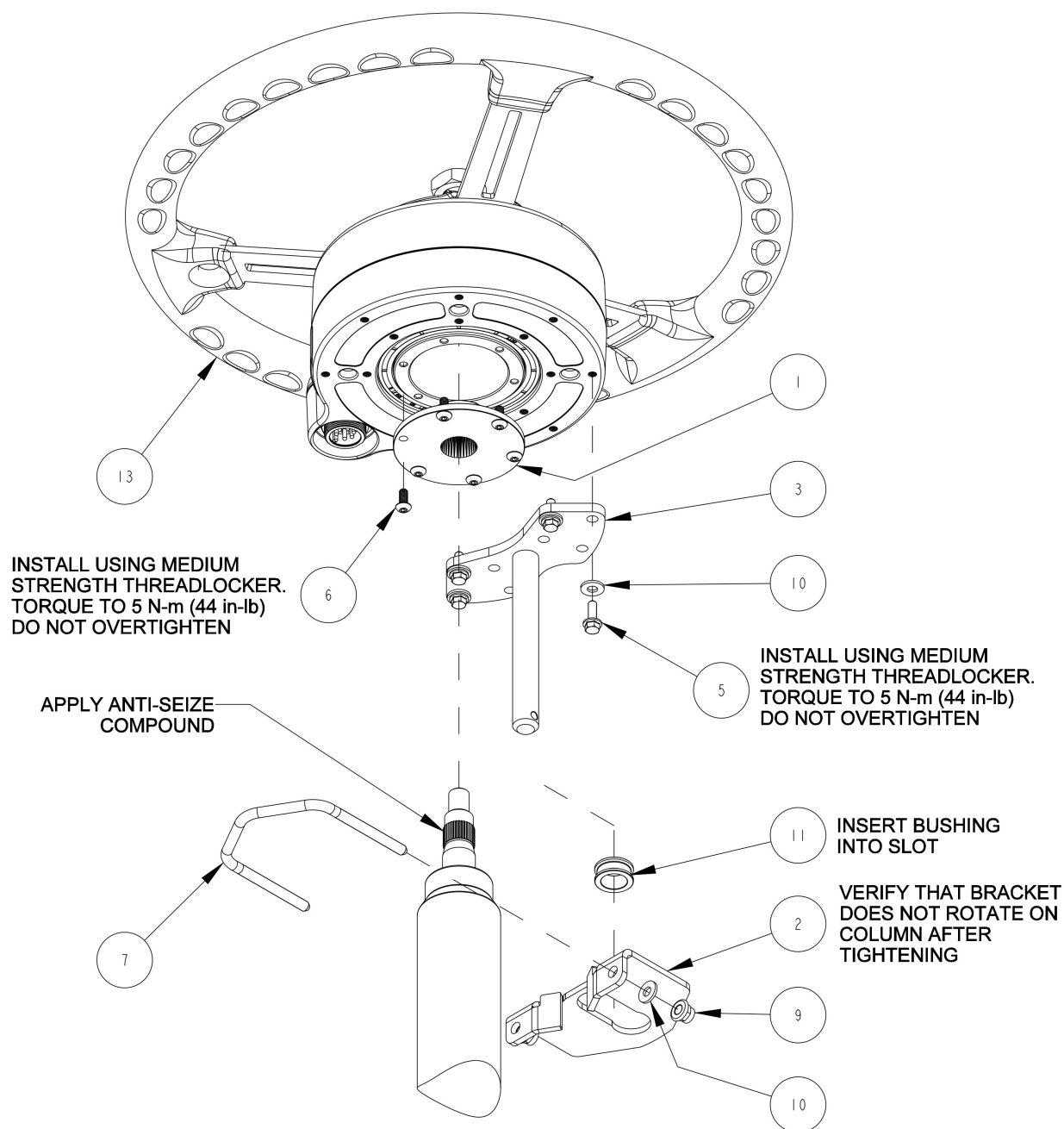
**NOTE:** Consult your equipment dealer if you are unsure of the correct procedure for removing the steering wheel.



Steering column is ready for ESI<sup>2</sup> installation.

## Install #1

### AGCO 2WD/MFWD Tractors

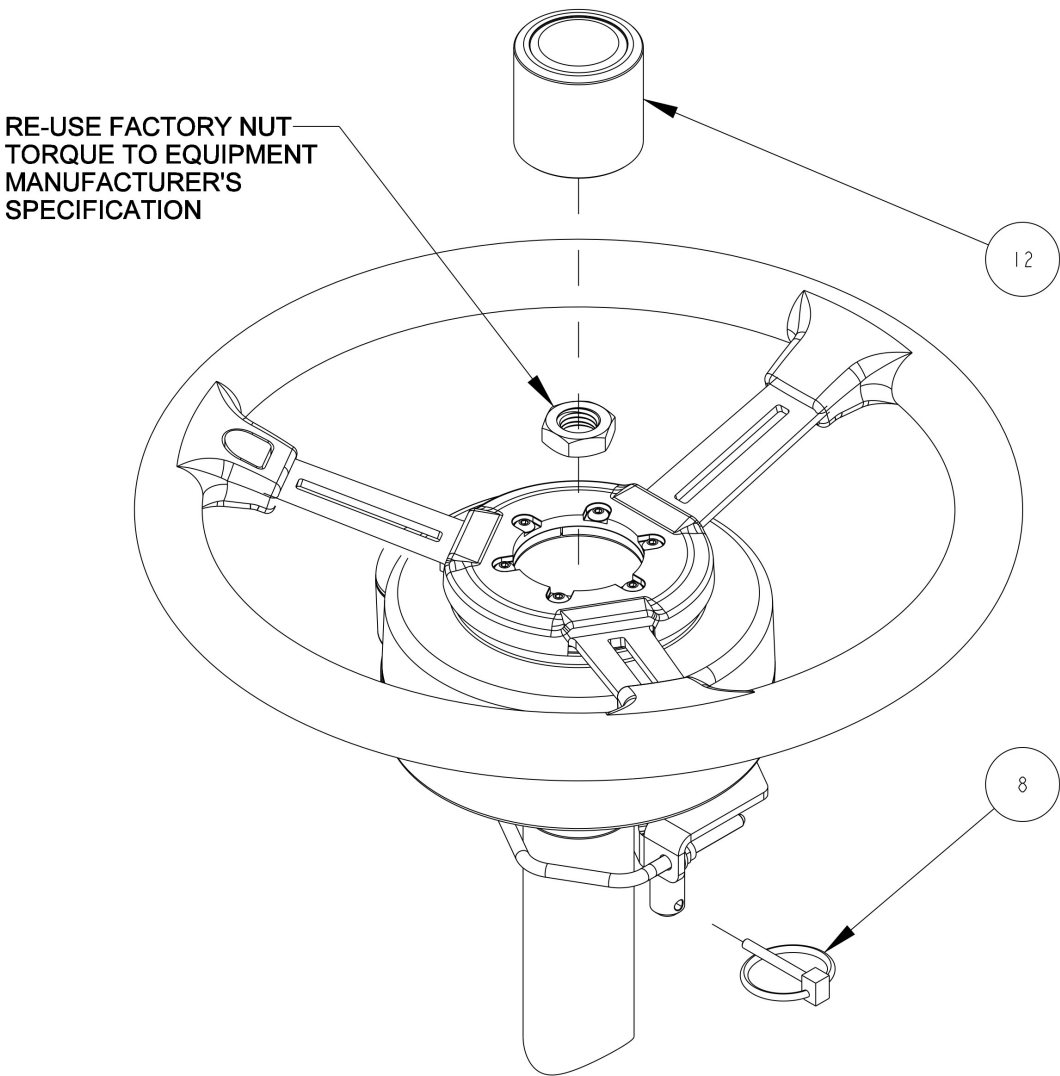


#### ASSEMBLY INSTRUCTIONS:

1. PRE-ASSEMBLE SPLINE ADAPTER AND T-BAR TO WHEEL MOTOR.
2. ASSEMBLE BRACKET AND CLAMP TO STEERING COLUMN. BRACKET, T-BAR, AND WHEEL MOTOR ORIENTATION MAY VARY TO FIT YOUR APPLICATION.
3. INSERT BUSHING INTO SLOT IN BRACKET.
4. PLACE ASSEMBLY ON STEERING SHAFT AND RE-INSTALL STEERING SHAFT NUT.
5. INSTALL TELESCOPING PUSHBUTTON.
6. INSTALL RETAINING PIN IN T-BAR.

Install #1

AGCO 2WD/MFWD Tractors



ITEM	QTY	PART NUMBER	DESCRIPTION	NOTES
1	1	604-0074-10	SPLINE ADAPTER- ESI2, 36T x .875 MAJOR x .180/.870 OFFSET	
2	1	640-0182-01	V-CLAMP BRACKET	
3	1	640-0183-01	T-BAR	
4	1	675-0126-000	LOCTITE 242 MEDIUM STRENGTH THREADLOCKER	NOT SHOWN
5	4	675-1348-10	SCREW, M5-0.8 X 16mm, HEX FLANGE	
6	6	675-1351-10	SCREW, M5-0.8 X 12mm, BUTTON HEAD	
7	1	675-2084-01	V-BOLT	
8	1	676-0037-000	RETAINING PIN	
9	2	676-1089-000	LOCKNUT, M6X1.0	
10	6	678-1148-10	WASHER, #12 SAE .250 ID X .562 OD	
11	1	699-0027-01	BUSHING, SPHERICAL	
12	1	720-0082-10	CENTER CAP, PUSHBUTTON, ESI2	
13	1	910-4024-10	ESI2 ELECTRIC STEERING WHEEL	



## Install #1

### AGCO 2WD/MFWD Tractors

---

ESi<sup>2</sup> wheel successfully installed





## Install #2

### AGCO Combines

---

Remove the steering wheel center cap and the plastic button used for telescoping the steering column.

Remove the nut holding the steering wheel onto the shaft.

**SAVE** the nut as it will be used later in this installation.

Following the manufacturer's recommended procedure remove the steering wheel.

**NOTE:** Consult your equipment dealer if you are unsure of the correct procedure for removing the steering wheel.



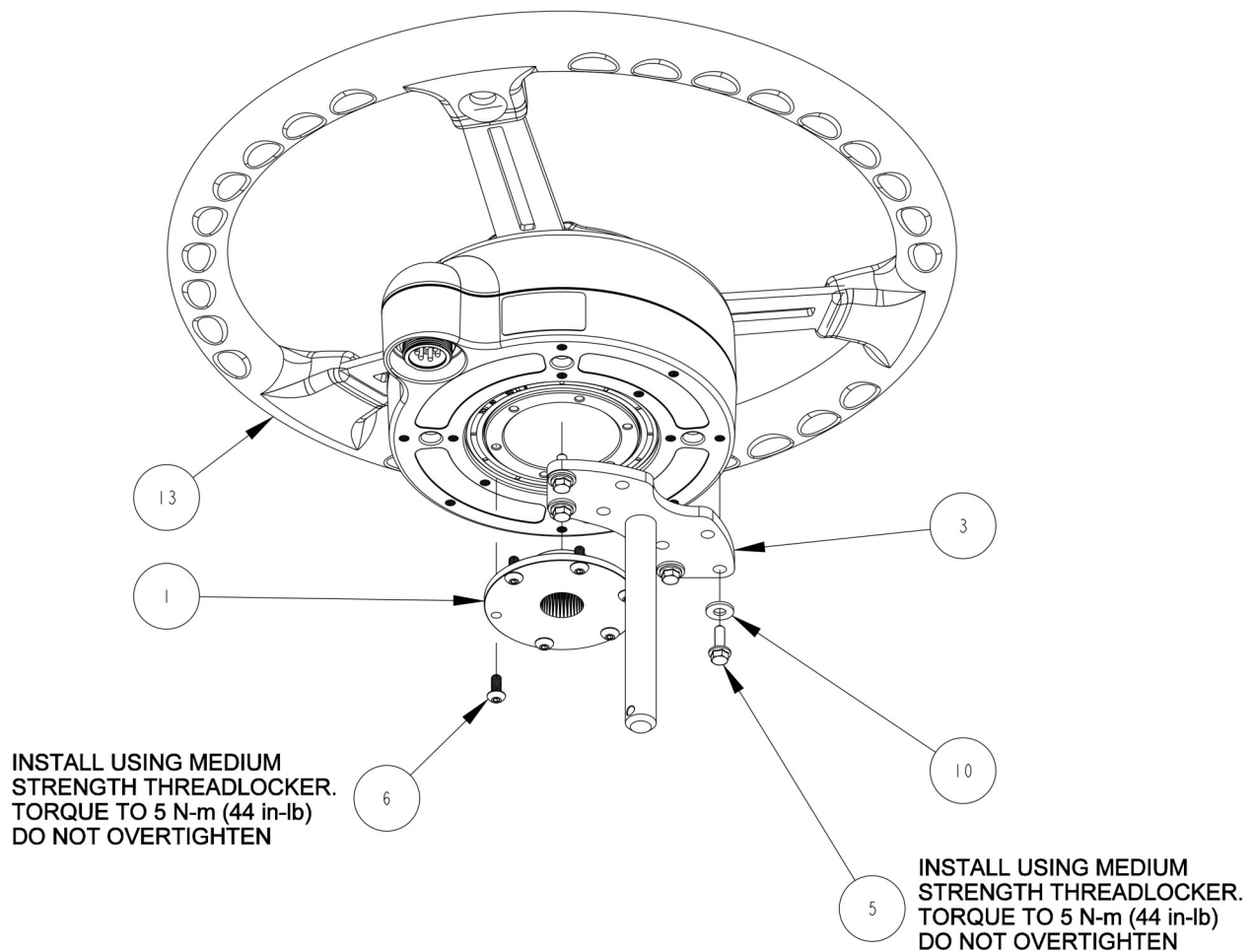
Steering column is ready for ESi<sup>2</sup> installation.



## Install #2

### AGCO Combines

---

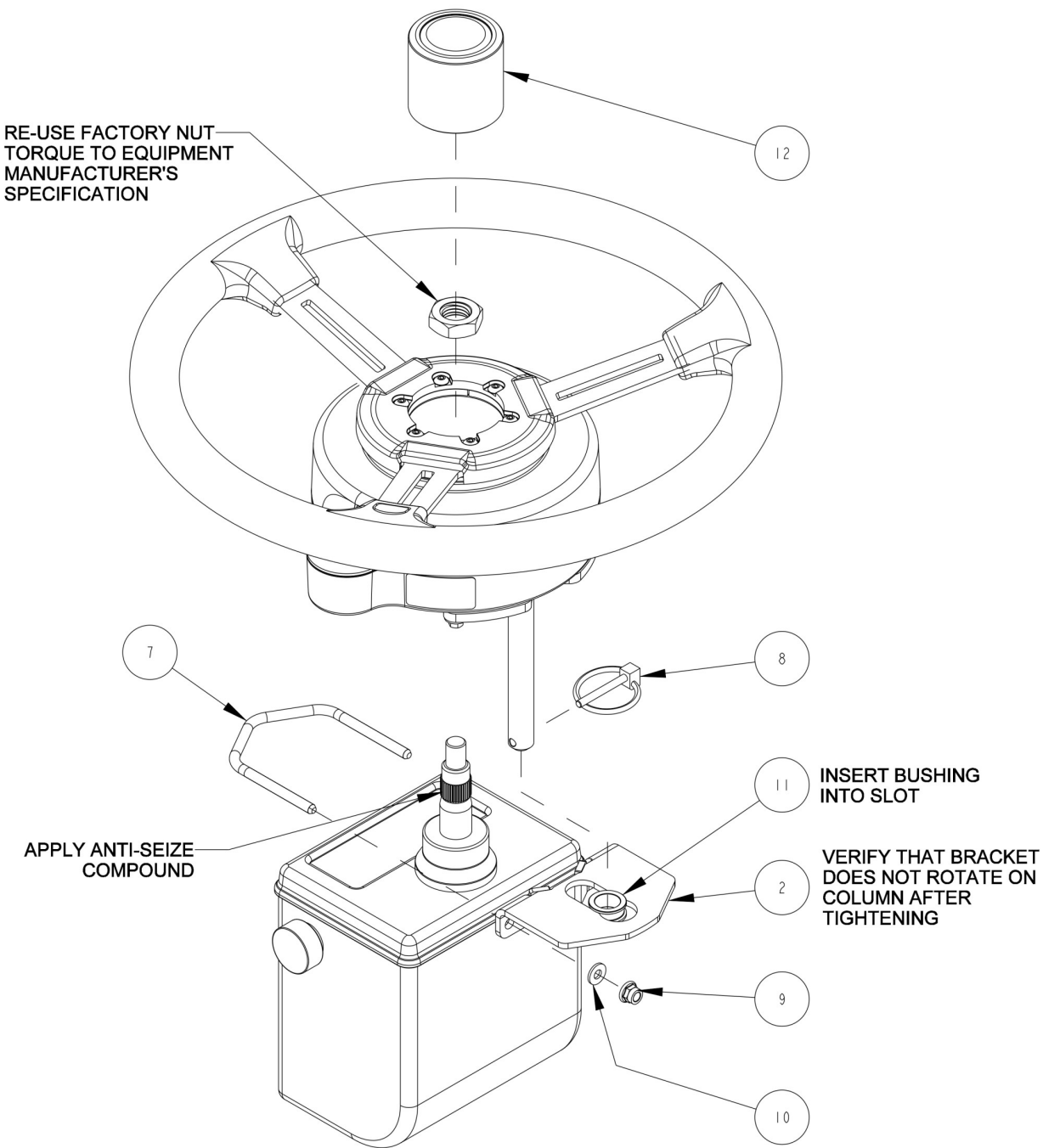


#### ASSEMBLY INSTRUCTIONS:

1. PRE-ASSEMBLE SPLINE ADAPTER AND T-BAR TO WHEEL MOTOR.
2. ASSEMBLE BRACKET AND CLAMP TO STEERING COLUMN.  
BRACKET, T-BAR, AND WHEEL MOTOR ORIENTATION  
MAY VARY TO FIT YOUR APPLICATION.
3. INSERT BUSHING INTO SLOT IN BRACKET.
4. PLACE ASSEMBLY ON STEERING SHAFT AND RE-INSTALL STEERING SHAFT NUT.
5. INSTALL TELESCOPING PUSHBUTTON.
6. INSTALL RETAINING PIN IN T-BAR.

Install #2

AGCO Combines



ITEM	QTY	PART NUMBER	DESCRIPTION	NOTES
1	1	604-0074-10	SPLINE ADAPTER- ESI2, 36T x .875 MAJOR x .180/.870 OFFSET	
2	1	640-0182-01	V-CLAMP BRACKET	
3	1	640-0183-01	T-BAR	
4	1	675-0126-000	LOCTITE 242 MEDIUM STRENGTH THREADLOCKER	NOT SHOWN
5	4	675-1348-10	SCREW, M5-0.8 X 16mm, HEX FLANGE	
6	6	675-1351-10	SCREW, M5-0.8 X 12mm, BUTTON HEAD	
7	1	675-2084-01	V-BOLT	
8	1	676-0037-000	RETAINING PIN	
9	2	676-1089-000	LOCKNUT, M6X1.0	
10	6	678-1148-10	WASHER, #12 SAE .250 ID X .562 OD	
11	1	699-0027-01	BUSHING, SPHERICAL	
12	1	720-0082-10	CENTER CAP, PUSHBUTTON, ESI2	
13	1	910-4024-10	ESI2 ELECTRIC STEERING WHEEL	

## Install #2

### AGCO Combines

---

ESi<sup>2</sup> wheel successfully installed



## Install Completion Checklist

---

- Ensure steering wheel turns freely and anti-rotation brackets do not contact the spline adapter.
- Check, and if needed, tighten anti-rotation brackets to eliminate excess movement. Loose anti-rotation brackets can cause poor steering performance.
- For steering ECU installation instructions please refer to the ECU installation guide that came with your installation kit.