

Installation Guide

Installation Kit: 911-6118-10



Challenger Combines

520C
540C
560C
670B
680B* *2009 & Newer

Gleaner Combines

A66 S67
A76 S77
A86 S68
R66 S78
R76 S88

Massey Ferguson Combines

Centora 7280 9540
Centora 7282 9550
Centora 7380 9560
Centora 7382 9695
9520 9795* *2009 & Newer
9530 9895*

Challenger Swathers

WR9740
WR9760
WR9770
WR9840
WR9860
WR9870

Fendt Combines

5275 9390R
6275 9460R
6335 9470
9300R 9480R
9350R 9490

Massey Ferguson Swathers

WR9725 WR9770
WR9735 WR9840
WR9740 WR9860
WR9670 WR9870

Introduction

The procedures outlined in this guide provide the basic installation procedure for the ESi² on the machines specified on the front cover of this guide. If you do not see your machine listed, contact customer support for further instruction. The kit components and corresponding install instructions are designated for each applicable machine make and model and may not be used on undesignated machine models.

Review Installation Kit Contents

Kit contents are outlined in the ESi² installation section on pages 8 and 9. Read all applicable installation instructions for your machine's model and ensure that all required kit components are present before beginning the installation.

NOTE: Due to manufacturing processes outside of Outback Guidance's control, the installer may have to adapt this kit to your distinct situation.

Read and Follow All Safety Messages

- Refer to the safety manual for the machine that the ESi² is being installed on for operating age and precautions.
- Prior to installing and operating the ESi², read and understand all safety precautions as outlined in this guide
- Store this guide and all related safety information with related machine manuals for future reference.

Safety Information and Warnings*

- ESi² is NOT designed to replace the machine's operator and is designed as a driving aid for use in precision agriculture applications.
- ESi² is NOT intended for use on roadways and should remain disengaged at all times when traveling on roadways.
- ESi² does NOT control the speed of the machine and a human operator is required to manually maintain a safe operating speed.
- ESi² does NOT avoid obstacles. To prevent human, machine and property injury a human operator is required to operate the machine at all times.
- Do NOT allow anyone to operate without instructions.
- At all times the driver is fully responsible for the safe operation of the vehicle.

* The safety warnings contained in this installation guide are not meant to be an exhaustive list of potential hazards.

Introduction

- To ensure peak performance, ESi² should only be installed after a thorough machine inspection has been conducted. The contents of this kit and ESi² are not intended to replace preventative and or needed maintenance. To avoid bodily and machine injury, follow the machine preparation checklist below:
 - ⇒ Inspect steering linkage: Machine should drive in a straight line without manual correction
 - ⇒ Turn off machine and power-off all electronic gauges, monitors and external devices when installing or performing maintenance on the ESi²
 - ⇒ Park machine on a clean and level surface
 - ⇒ Lower all implements and headers to the ground
 - ⇒ Apply the parking break and chock wheels
 - ⇒ Inspect any drilling and/or cutting sites to ensure no electrical wiring damage will be incurred

Machine Preparation

Remove the steering wheel center cap and the nut holding the telescoping actuator knob on the shaft

SAVE the nut as it will be used later in this installation.

Remove the telescoping actuator knob to gain access to the nut that holds the steering wheel onto the shaft.

Remove and **SAVE** this nut as it will be used later in this installation.

Following the manufacturer's recommended procedure remove the steering wheel.



NOTE: Consult your equipment dealer if you are unsure of the correct procedure for removing the steering wheel.

Remove the rubber bellows cover from the steering column.



Machine Preparation

Remove the screws that hold the two plastic halves of the column cover together.



Use an 1-1/8th socket to remove the nut holding the ignition switch in the plastic cover.



Machine Preparation

Remove the 3 screws that hold the turn signal switch in the column cover.

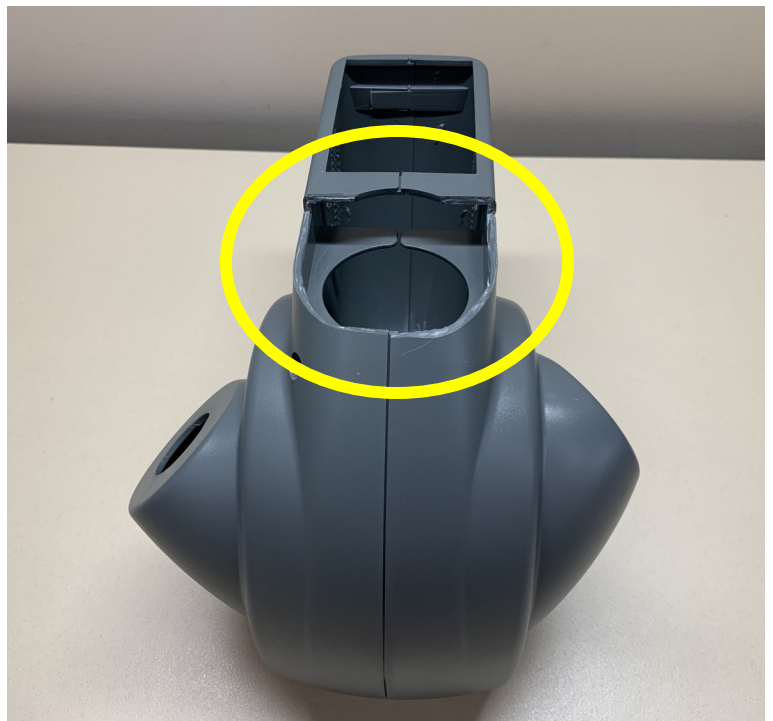
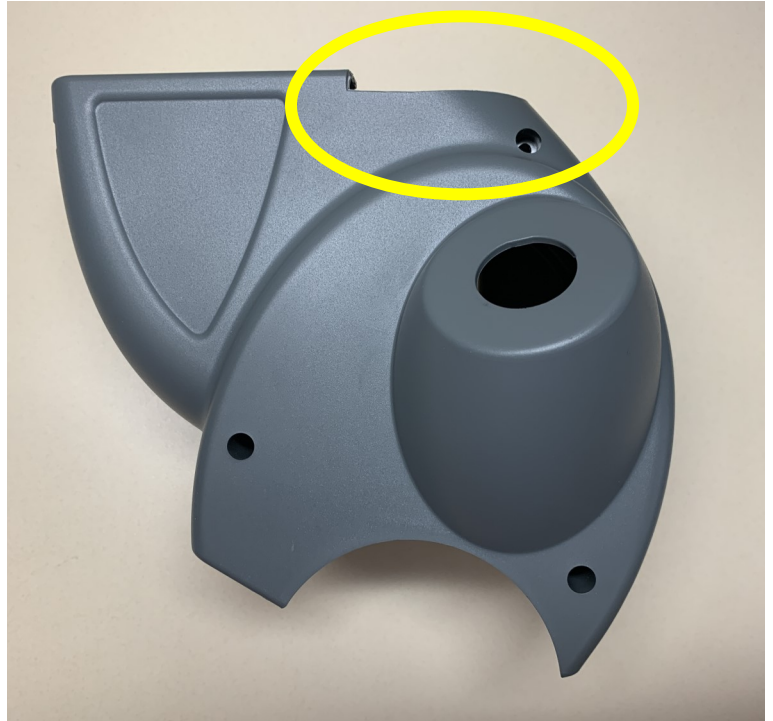


Slide the turn signal lever out of the plastic cover.

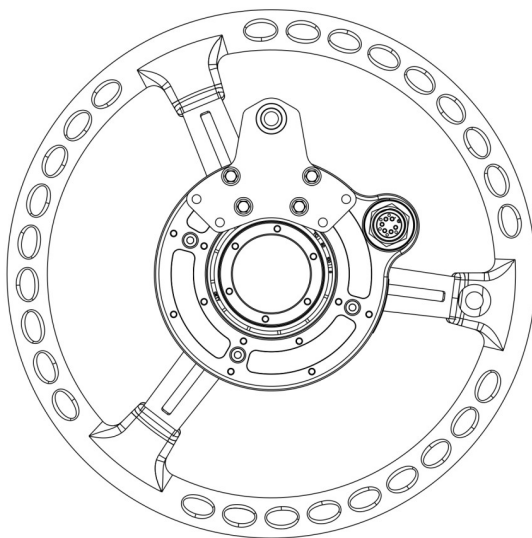
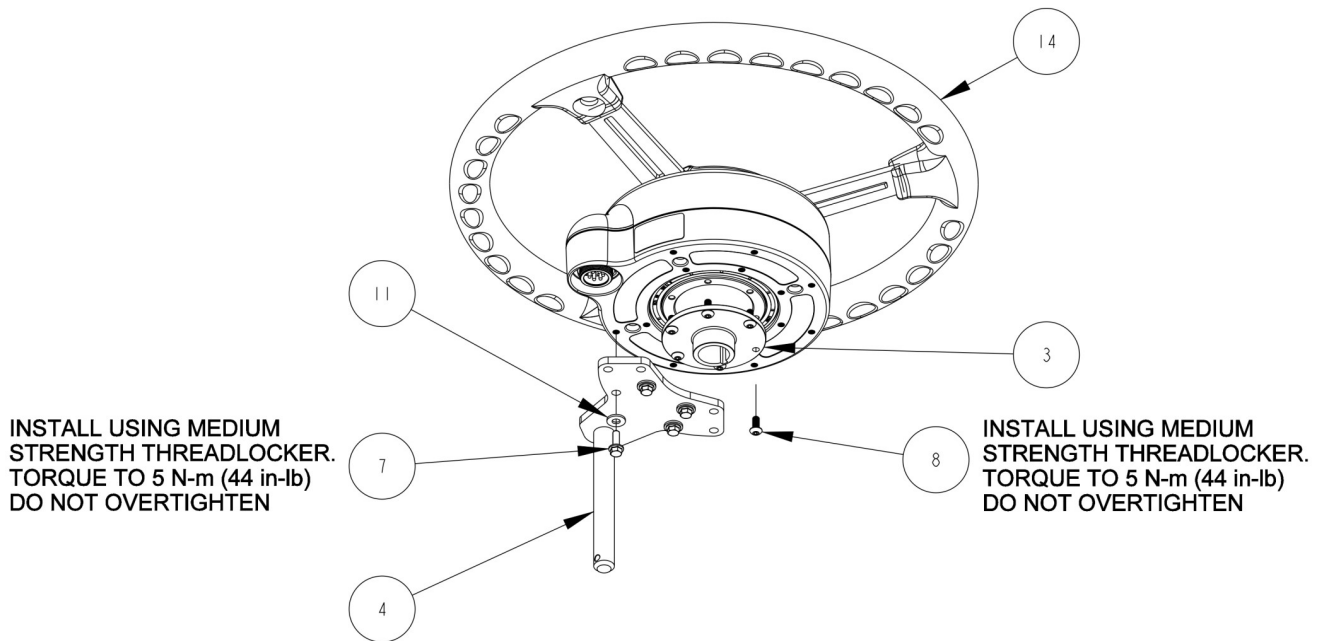


Machine Preparation

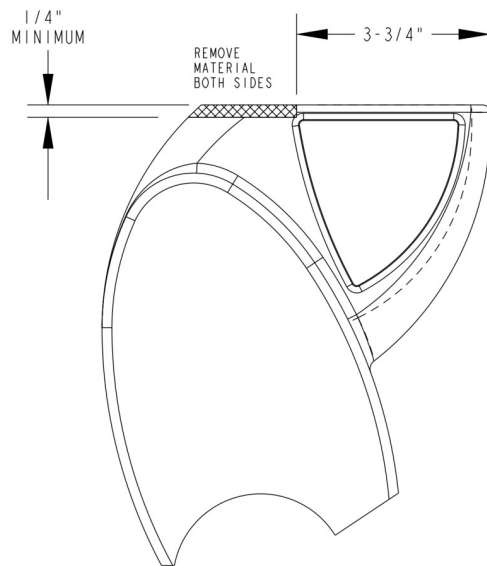
The left and right plastic column covers will need to be trimmed to allow for the anti-rotation bracket to be installed. See page 8 for measurements that are need to make the correct cuts in the plastic pieces.



ESi² Installation



T-BAR INSTALLATION ORIENTATION

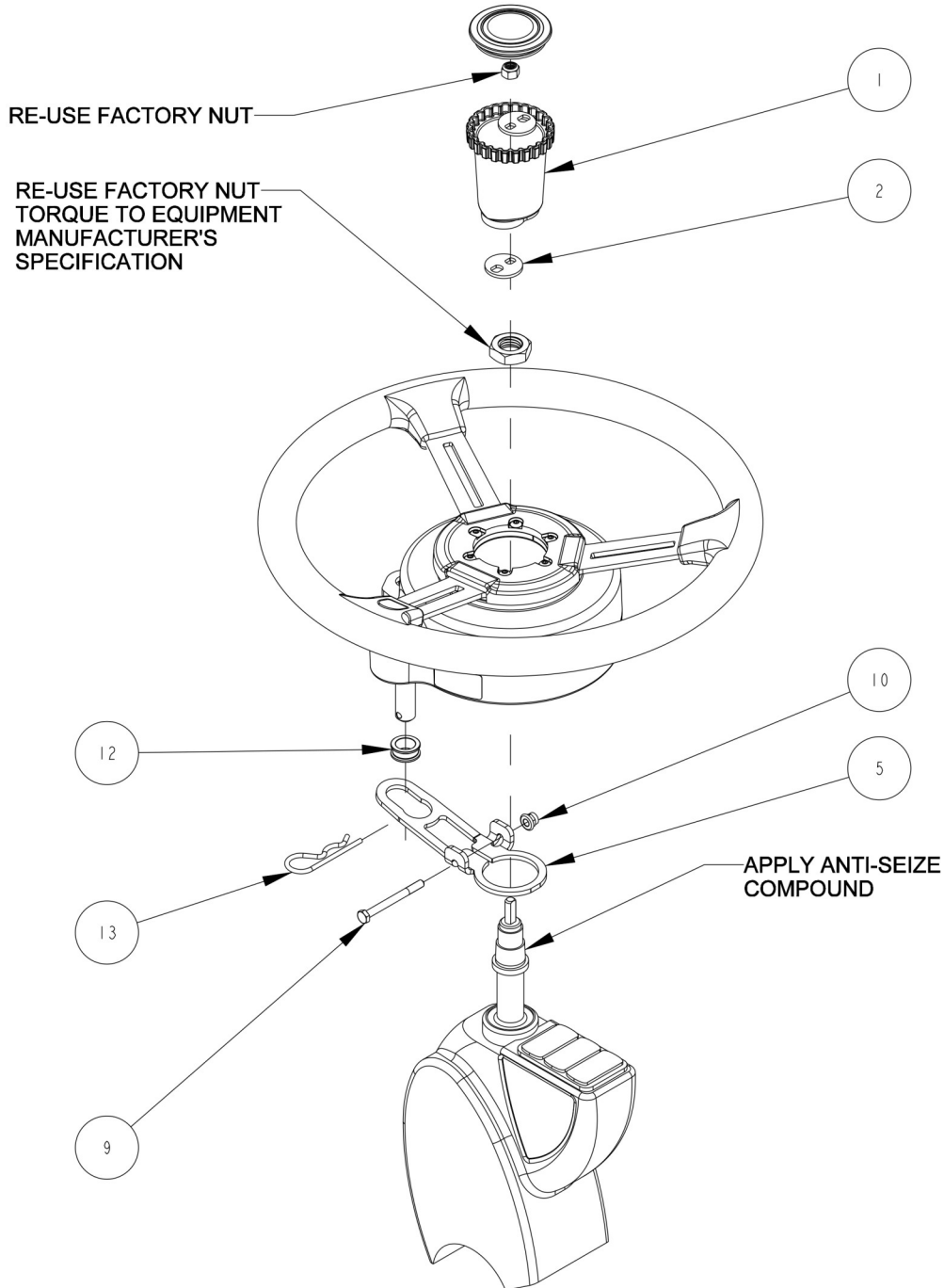


PLASTIC COVERS CUT DETAIL

ASSEMBLY INSTRUCTIONS:

1. PRE-ASSEMBLE SPLINE ADAPTER AND T-BAR TO WHEEL MOTOR AS SHOWN.
2. CLAMP THE BRACKET ONTO TOP OF METAL STEERING COLUMN. TIGHTEN THE BOLT ENOUGH THAT THE BRACKET DOES NOT ROTATE, BUT AVOID OVERTIGHTENING AND WARPING THE BRACKET.
3. INSERT BUSHING INTO SLOT IN BRACKET.
4. PLACE WHEEL ASSEMBLY ON STEERING SHAFT AND RE-INSTALL STEERING SHAFT NUT.
5. INSTALL TELESCOPING KNOB COMPONENTS AND CENTER CAP.
6. INSTALL RETAINING PIN IN T-BAR.
7. ROTATE THE WHEEL A FULL TURN TO ENSURE THERE IS NO INTERFERENCE BETWEEN THE BRACKETS AND SPLINE ADAPTER, OR ANY MOVING PARTS AND MACHINE CONTROLS.

ESi² Installation



ITEM	QTY	PART NUMBER	DESCRIPTION	NOTES
1	1	600-1486-01	TELESCOPING ACTUATOR KNOB	
2	2	601-1290-01	TELESCOPING ACTUATOR PLATE	
3	1	604-0079-10	SPLINE ADAPTER- ESI2, KEYED x .910 MINOR DIA TAPER x .740 OFFSET	
4	1	640-0187-10	T-BAR	
5	1	640-0193-10	BRKT, AR, ESI2, AGCO WR, AGCO COMBINE	
6	1	675-0126-000	LOCTITE 242 MEDIUM STRENGTH THREADLOCKER	NOT SHOWN
7	4	675-1348-10	SCREW, M5-0.8 X 16mm, HEX FLANGE	
8	6	675-1351-10	SCREW, M5-0.8 X 12mm, BUTTON HEAD	
9	1	675-1357-10	BOLT, M6-1.0 X 65, HEX HEAD	
10	1	676-1089-000	NUT, M6-1.0, NYLOCK, FLANGED, ZP	
11	4	678-1148-10	WASHER, #12 SAE .250 ID X .562 OD	
12	1	699-0027-01	BUSHING, SPHERICAL, T-BAR	
13	1	699-0035-10	RETAINING PIN	
14	1	910-4024-10	ESI2 ELECTRIC STEERING WHEEL	

ESi² Installation Completed

ESi² wheel successfully installed



Install Completion Checklist

- Ensure steering wheel turns freely and anti-rotation brackets do not contact the spline adapter.
- Check, and if needed, tighten anti-rotation brackets to eliminate excess movement. Loose anti-rotation brackets can cause poor steering performance.
- For steering ECU installation instructions please refer to the ECU installation guide that came with your installation kit.