

eDriveXC/XD Steering ECU Installation Guide

For the installation of eDriveXC or XD with eDrive ESI²

Verify contents of the 710-0163-10 ECU hardware install kit before proceeding.

Part Number	Description	QTY
515-0143-01	M6 x 1.0 x 12mm ECU mounting screws	4
640-0091-000	eDriveXC/XD ECU bracket	1
675-1197-000	#10 x 2.5" self-drilling screws	4
675-1192-000	#10 x 3" self-drilling screws	4
675-1286-000	#10 x 4" self-drilling screws	4
680-1144-10	plastic spacer	3
876-0263-10	ECU installation guide	1

WARNING!

Before you perform any drilling, cutting or fastening, ensure that no other machine components, such as hydraulic hoses or electrical wiring, will be damaged. Failure to follow this warning may cause physical injury and/or damage to the machine.

The key points of an ECU installation are:

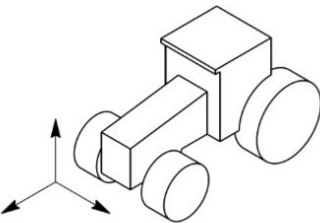
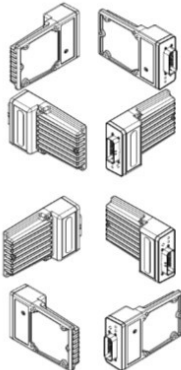
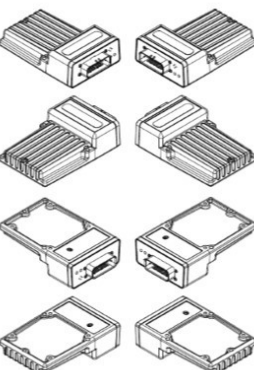
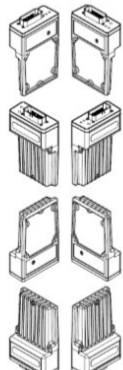
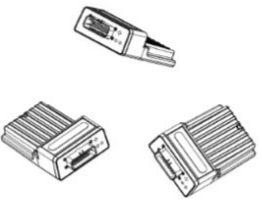
- Ensuring the correct orientation/alignment of the ECU bracket/ECU. see diagram on page 2.
Note: The ribbed, labeled face of the ECU is regarded and referred to as the 'Top'.
- Selecting a suitable location for the ECU bracket/ECU (one where it's safe to drill/self-drill for the bracket)—see page 3 for details.
- Mounting of the ECU so that the main cable— however routed into the cab—will most easily connect at the ECU's single connector socket.
- Cabling diagram located on page 6 shows how the cabling connects to the steering ECU and the rest of the autosteering system.

ECU mounting orientation

To ensure proper steering performance the ECU must be mounted correctly. It is important that you note which steering ECU you are installing because there are mounting limitations depending on which steering ECU you have. The steering ECU can be mounted with or without a bracket. The steering ECU must be mounted square to the machine's floor and center plane.

NOTE!

eDrive XD may only be installed with the top facing: left, right, fore, or aft.

Acceptable ECU mounting orientations				
				 <p>NOT SQUARE TO MACHINE</p>
eDrive XD	✓	✗	✗	✗
eDrive XC	✓	✓	✓	✗

ECU installation with bracket

You may use any cab feature (for example, seat mounting box, floor mat rib) that you consider to be square to the machine's floor and center plane to similarly align your ECU before installation.

NOTE!

Before drilling (or using self-drilling screws) in the cab, make sure that there is nothing that can be damaged by the drilling or by any self-drilling screws used to secure the ECU mounting bracket. Secure anything that could be damaged away from where the screws come through.



The 640-0091-000 ECU mounting bracket is the most commonly used method of mounting the steering ECU. In the example pictured to the right, the bracket is mounted to the left of the driver's seat on the cab floor. The bracket is set with its long side parallel to the machine's fore/aft centerline.

Secure the bracket to the floor with self tapping screws. Extra screws of different lengths are provided. Use screws that are long enough to reach through the floor mat and into the metal cab floor. Be careful to not overtighten the screws as they may fail.



ECU installation with bracket



To the right are two examples of the ecu bracket mounted in the front right corner of the machine cab.

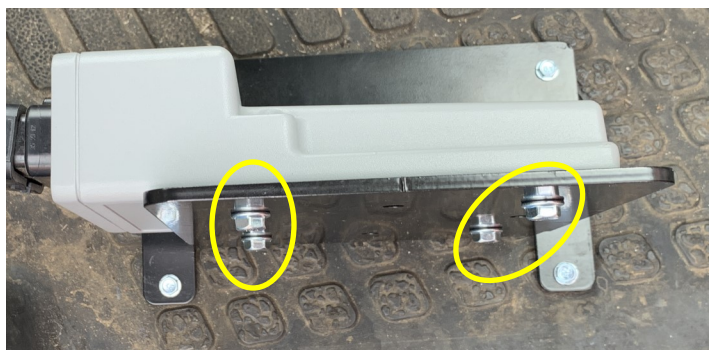


NOTE!

Before installing the ECU bracket ensure that you will have enough clearance to route the ecu harness when it is connected to the ECU.



Use the four M6 screws (515-0143-01) to secure the ECU to the bracket.



ECU installation without bracket

If no suitable place exists for the ECU next to the seat or in the right front corner of the cab. The ECU may be secured to the inside of the machine's fender as long as the surface is perpendicular to the floor.



Three plastic spacers are supplied with your ECU installation kit but they may or may not be used in your application. The plastic spacers are used if there is a thick foam padding covering the fender. If the spacers aren't used in this situation then the ECU harness may not be able to plug into the steering ECU connector.

Secure the bracket to the fender with self tapping screws. Extra screws of different lengths are provided. Use screws that are long enough to reach through the spacers and padding and into the metal fender wall. Be careful to not overtighten the screws as they may fail.



ECU harness installation

- Route and secure harness so that it does not interfere with any of the machines' controls.
- Leave enough cable slack at the steering wheel connection to allow for full adjustment of the steering wheel without causing excess stress on the connector.
- Ensure connectors are fully seated together and tightened.

