



Sprayer Run/Hold Switch Kit

P/N: OBK-360-SRH

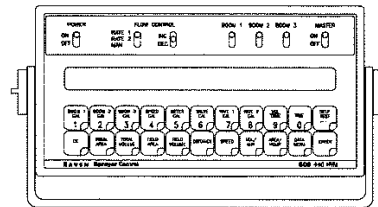
Overview

Install this kit on any device that supplies 12 volts when turned on, including Raven spray controllers. 12 volts applied to this kit will start the acre counting in the Outback 360, whereas, absence of 12 volts stops acre counting.

Kit Contents

The sprayer run/hold switch kit includes a relay and wire harness with run/hold switch input connector and hook up wire for 12-volt status line along with instructions for common applications.

RAVEN SCS 440 / 450
SPRAYER CONTROL CONSOLE



Installation - General Application

Insert the two wire plug into mating connector of the Outback 360 remote run/hold switch input.

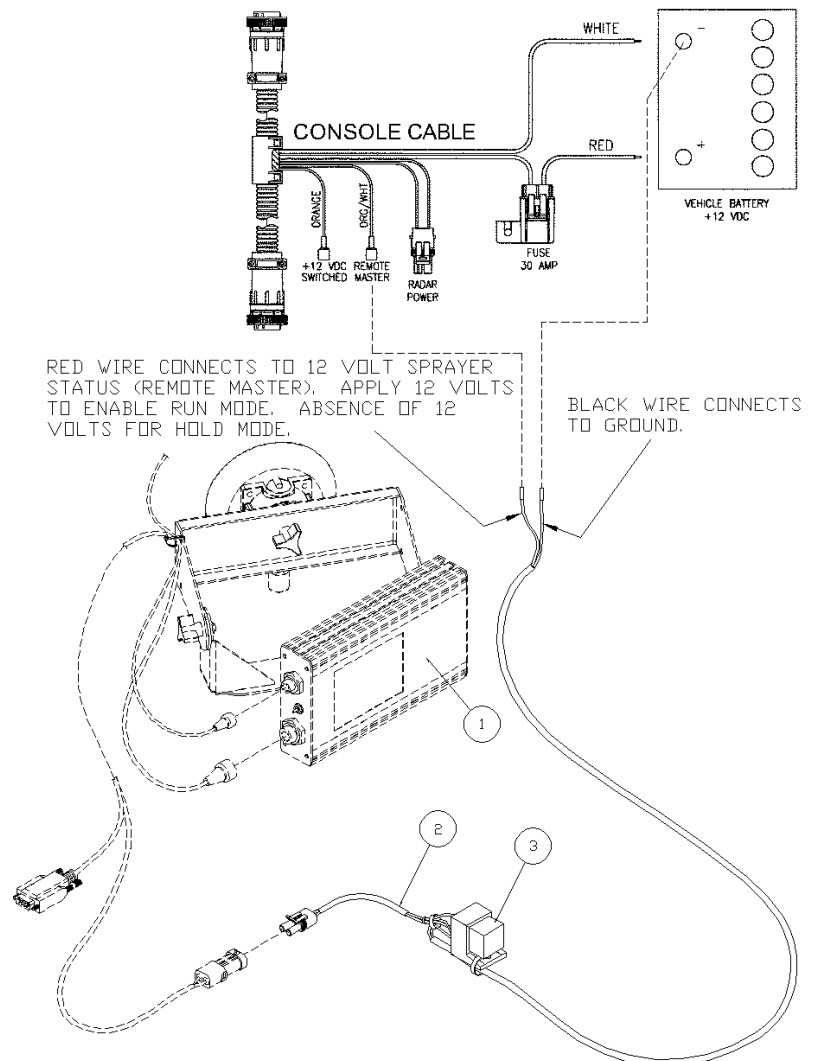
Connect the red wire to a 12-volt sprayer status line and the black wire to ground. Application of 12 volts to the red wire enables the 360 run mode, while absence of 12 volts set the 360 into hold mode.

Installation - Raven SCS 440 / 450

Insert the two wire plug into mating connector of the Outback 360 remote run/hold switch input.

Connect the orange wire with a white strip at the power breakout of the console cable to the red wire. Connect the black wire to ground.

Use the Master On/Off switch on the Raven sprayer control console to control the Outback 360 run/hold input.



REF.	P/N	DESCRIPTION	QTY.
1	OBK-360	Outback 360 Mapping System	
2	AB447	Wire Harness, Run/Hold with Relay OBK-360	1
3	69253-OBK	Relay, 40A-SPST-NO	1