

# Installation Guide

Installation Kit: 911-6121-10



## Case IH Combines

5130\* 7230<sup>+</sup>

5140 7240

5150 7250

6130\* 8230<sup>+</sup>

6140 8240

6150 8250

7130\* 9230<sup>+</sup>

7140 9240

7150 9250

\*2014 & newer only  
After S/N YDG009296

<sup>+</sup>2014 & newer only  
After S/N YDG218540

## New Holland Combines

CR6.80 CR9.90

CR6.90 CR10.90

CR7.80 CX7.80

CR7.90 CX8.80

CR8.80 CX8.85

CR8.90 CX8.90

CR9.80

# Introduction

---

The procedures outlined in this guide provide the basic installation procedure for the ESi<sup>2</sup> on the machines specified on the front cover of this guide. If you do not see your machine listed, contact customer support for further instruction. The kit components and corresponding install instructions are designated for each applicable machine make and model and may not be used on undesignated machine models.

## **Review Installation Kit Contents**

Kit contents are outlined in the ESi<sup>2</sup> installation section on pages 8 and 9. Read all applicable installation instructions for your machine's model and ensure that all required kit components are present before beginning the installation.

**NOTE:** Due to manufacturing processes outside of Outback Guidance's control, the installer may have to adapt this kit to your distinct situation.

## **Read and Follow All Safety Messages**

- Refer to the safety manual for the machine that the ESi<sup>2</sup> is being installed on for operating age and precautions.
- Prior to installing and operating the ESi<sup>2</sup>, read and understand all safety precautions as outlined in this guide
- Store this guide and all related safety information with related machine manuals for future reference.

## **Safety Information and Warnings\***

- ESi<sup>2</sup> is NOT designed to replace the machine's operator and is designed as a driving aid for use in precision agriculture applications.
- ESi<sup>2</sup> is NOT intended for use on roadways and should remain disengaged at all times when traveling on roadways.
- ESi<sup>2</sup> does NOT control the speed of the machine and a human operator is required to manually maintain a safe operating speed.
- ESi<sup>2</sup> does NOT avoid obstacles. To prevent human, machine and property injury a human operator is required to operate the machine at all times.
- Do NOT allow anyone to operate without instructions.
- At all times the driver is fully responsible for the safe operation of the vehicle.

\* The safety warnings contained in this installation guide are not meant to be an exhaustive list of potential hazards.

# Introduction

---

- To ensure peak performance, ESi<sup>2</sup> should only be installed after a thorough machine inspection has been conducted. The contents of this kit and ESi<sup>2</sup> are not intended to replace preventative and or needed maintenance. To avoid bodily and machine injury, follow the machine preparation checklist below:
  - ⇒ Inspect steering linkage: Machine should drive in a straight line without manual correction
  - ⇒ Turn off machine and power-off all electronic gauges, monitors and external devices when installing or performing maintenance on the ESi<sup>2</sup>
  - ⇒ Park machine on a clean and level surface
  - ⇒ Lower all implements and headers to the ground
  - ⇒ Apply the parking break and chock wheels
  - ⇒ Inspect any drilling and/or cutting sites to ensure no electrical wiring damage will be incurred

# Machine Preparation

---

**NOTE:** After the ESi2 wheel is installed it may contact the front cab glass so use caution when tilting the steering column all the way forward

Remove the steering wheel center cap and the nut holding the telescoping actuator knob on the shaft

**SAVE** the nut as it will be used later in this installation.

Remove the telescoping actuator knob to gain access to the nut that holds the steering wheel onto the shaft.

Remove and **SAVE** this nut as it will be used later in this installation.

Following the manufacturer's recommended procedure remove the steering wheel.

**NOTE:** Consult your equipment dealer if you are unsure of the correct procedure for removing the steering wheel.

Remove the four screws that hold the right side cover onto the column

Remove the 2 screws that hold the left side cover onto the column. The left side cover will hang off to the side of the steering column.





# Machine Preparation

---

Remove the snap ring that secures the rubber bellows cover. Cut the zip tie at the bottom of the rubber bellows cover

Remove bellows cover from steering column.



Steering column ready for ESi2 installation.



# ESi<sup>2</sup> Installation

---

Secure the anti rotation bracket to the steering column using the M6 hardware. Make sure the bracket shoulder lines up with the top of the steering column tube.

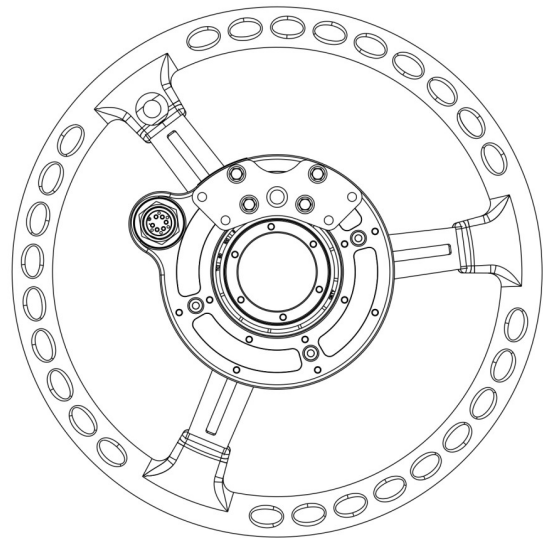
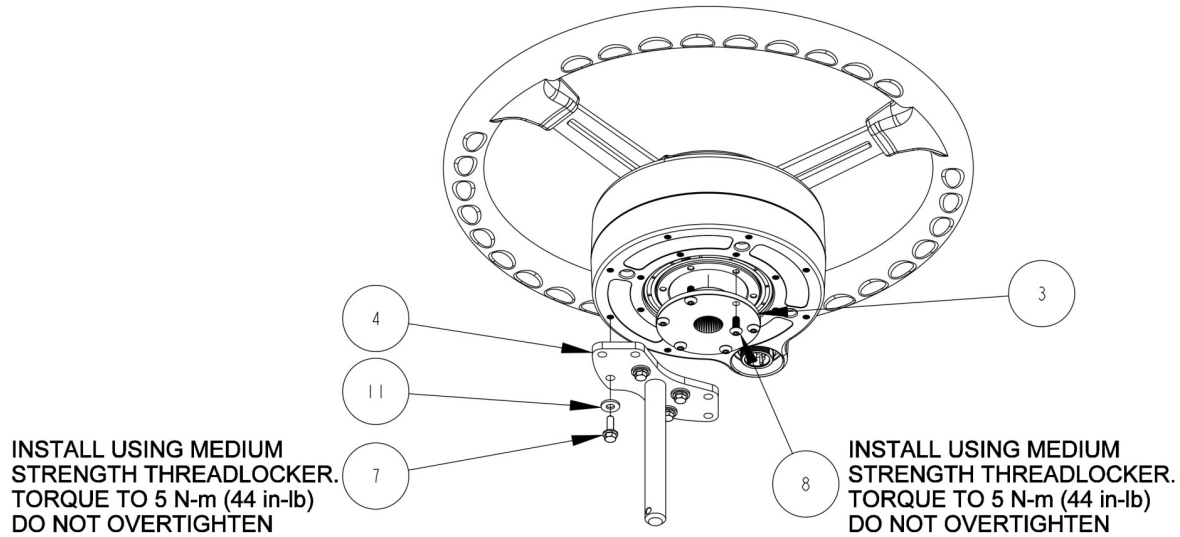
For more detailed instructions reference pages 8 and 9 of your installation.





# ESi<sup>2</sup> Installation

---



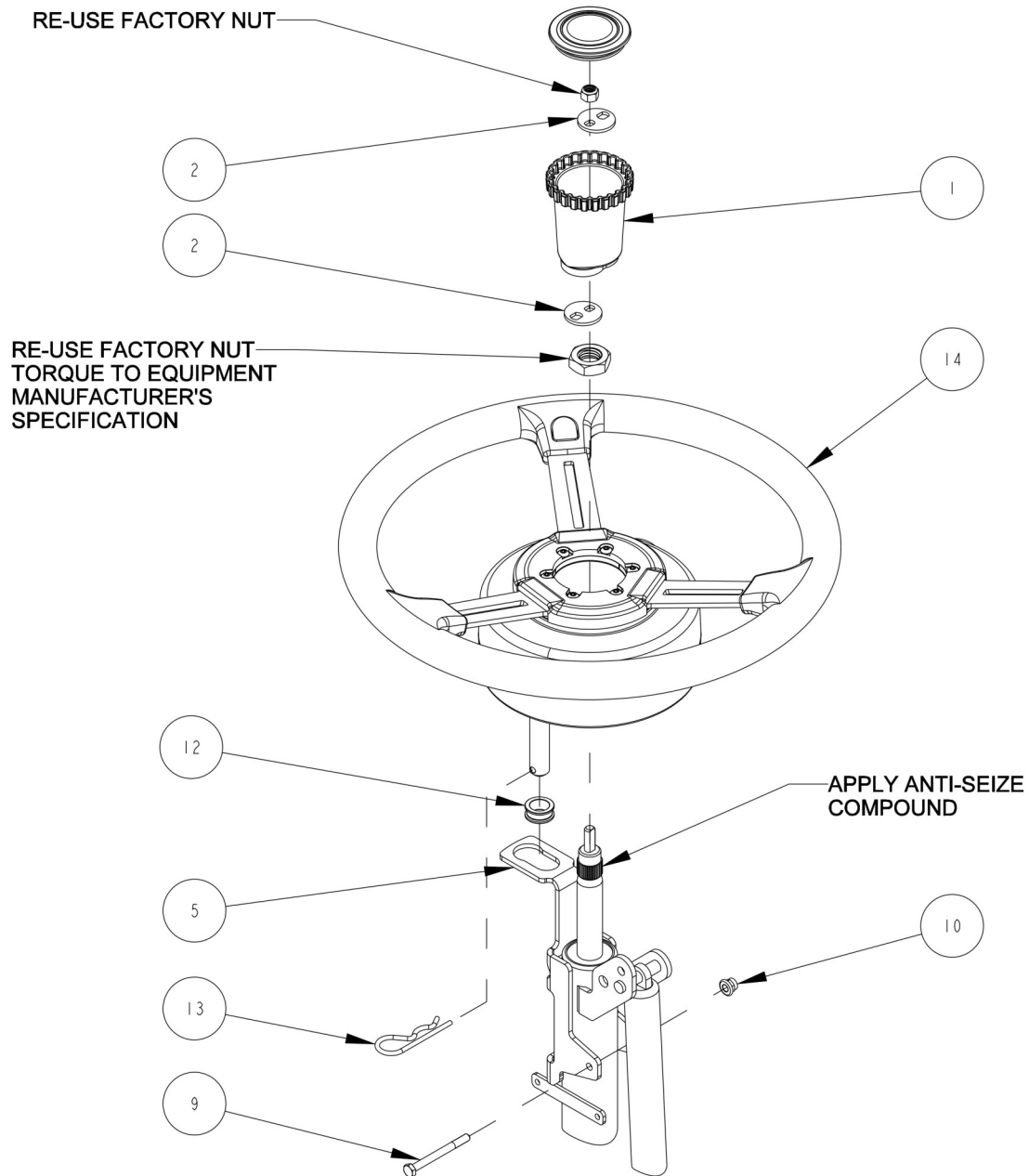
T-BAR INSTALLATION ORIENTATION

## ASSEMBLY INSTRUCTIONS:

1. PRE-ASSEMBLE SPLINE ADAPTER AND T-BAR TO WHEEL MOTOR AS SHOWN.
2. CLAMP THE BRACKET ONTO THE METAL TUBE OF THE STEERING COLUMN. TIGHTEN THE BOLT ENOUGH THAT THE BRACKET DOES NOT ROTATE.
3. RE-INSTALL PLASTIC COVERS OVER THE BRACKET.
4. INSERT BUSHING INTO SLOT IN BRACKET.
5. PLACE WHEEL ASSEMBLY ON STEERING SHAFT AND RE-INSTALL STEERING SHAFT NUT.
6. INSTALL RETAINING PIN IN T-BAR.
7. ROTATE THE WHEEL A FULL TURN TO ENSURE THERE IS NO INTERFERENCE BETWEEN THE BRACKETS AND SPLINE ADAPTER, OR ANY MOVING PARTS AND MACHINE CONTROLS.



# ESi<sup>2</sup> Installation



ITEM	QTY	PART NUMBER	DESCRIPTION	NOTES
1	1	600-1486-01	TELESCOPING ACTUATOR KNOB	
2	2	601-1290-01	TELESCOPING ACTUATOR PLATE	
3	1	604-0074-10	SPLINE ADAPTER- ESI2, 36T x .875 MAJOR x .180/.870 OFFSET	
4	1	640-0183-01	T-BAR	
5	1	640-0196-10	BRKT, AR, ESI2, CNH COMMON CAB COMBINE	
6	1	675-0126-000	LOCTITE 242 MEDIUM STRENGTH THREADLOCKER	NOT SHOWN
7	4	675-1348-10	SCREW, M5-0.8 X 16mm, HEX FLANGE	
8	6	675-1351-10	SCREW, M5-0.8 X 12mm, BUTTON HEAD	
9	1	675-1357-10	BOLT, M6-1.0 X 65, HEX HEAD	
10	1	676-1089-000	NUT, M6-1.0, NYLOCK, FLANGED, ZP	
11	4	678-1148-10	WASHER, #12 SAE .250 ID X .562 OD	
12	1	699-0027-01	BUSHING, SPHERICAL, T-BAR	
13	1	699-0035-10	RETAINING PIN	
14	1	910-4024-10	ESI2 ELECTRIC STEERING WHEEL	

# ESi<sup>2</sup> Installation Completed

---

ESi<sup>2</sup> wheel successfully installed



## Install Completion Checklist

---

- Ensure steering wheel turns freely and anti-rotation brackets do not contact the spline adapter.
- Check, and if needed, tighten anti-rotation brackets to eliminate excess movement. Loose anti-rotation brackets can cause poor steering performance.
- For steering ECU installation instructions please refer to the ECU installation guide that came with your installation kit.