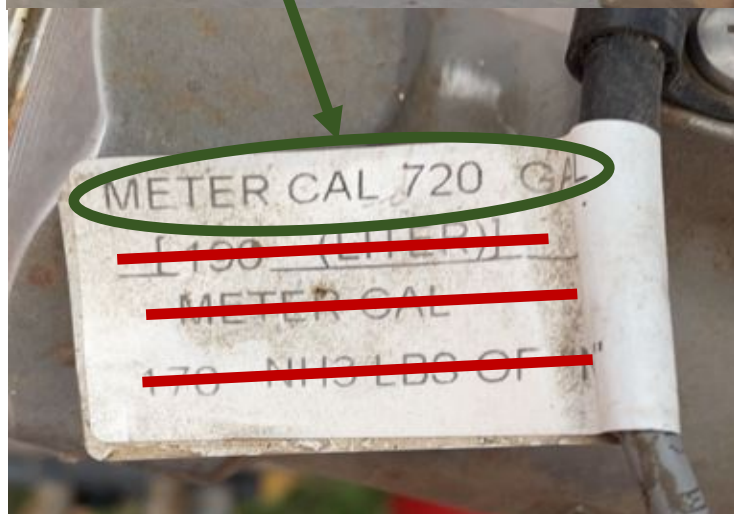


## Raven Meter Calibration Input for AC110

When inputting the Meter Calibration number for Raven products, use the Meter Cal number listed on the tag attached to the Flow Meter and divide that number by 10. Use the photos below for reference.



Ex: 720 divided by 10 equals 72.0. Enter 72.0 into the Meter Calibration of the AC110.

These pictures are example of an NH3 applicator. All Raven tags will be the same or very similar and will state "Meter Cal" on them.