

Scope –

The Outback S with up-to-date programming, (4.06 app. & 6.8J GPS), should be an AUTO differential satellite find. But if the unit was previously programmed to a specific Diff PRN it will not be able to pick a new or different satellites. If this is the case, follow the below steps.

Required Items-

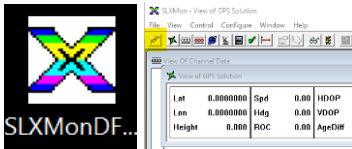
- USB to Serial Cable. - <https://outbackguidance.zendesk.com/hc/en-us/articles/1500008400821-GoldX-USB-to-Serial-Cables>
- SLXMON

Procedure -

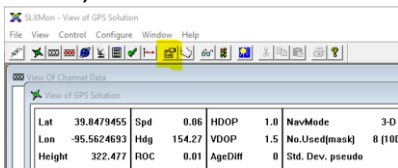
- Turn on the S with antenna hooked up, go to NEMA settings, set baud rate to 19200, set GGA & VTG to 5 Hz.
- Attach a 9 pin straight through, (Not null Modem), serial cable between computer and S console.



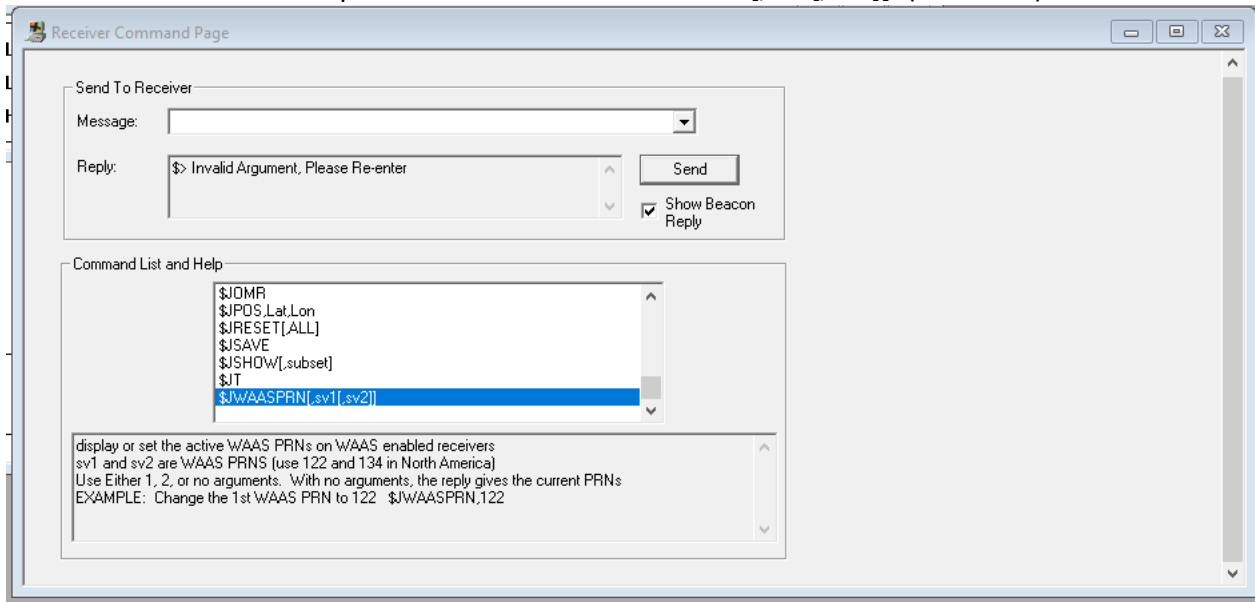
- Open SLX Mon program, choosing the icons across the top, click on open connection and choose the com port and baud that applies from the drop down.



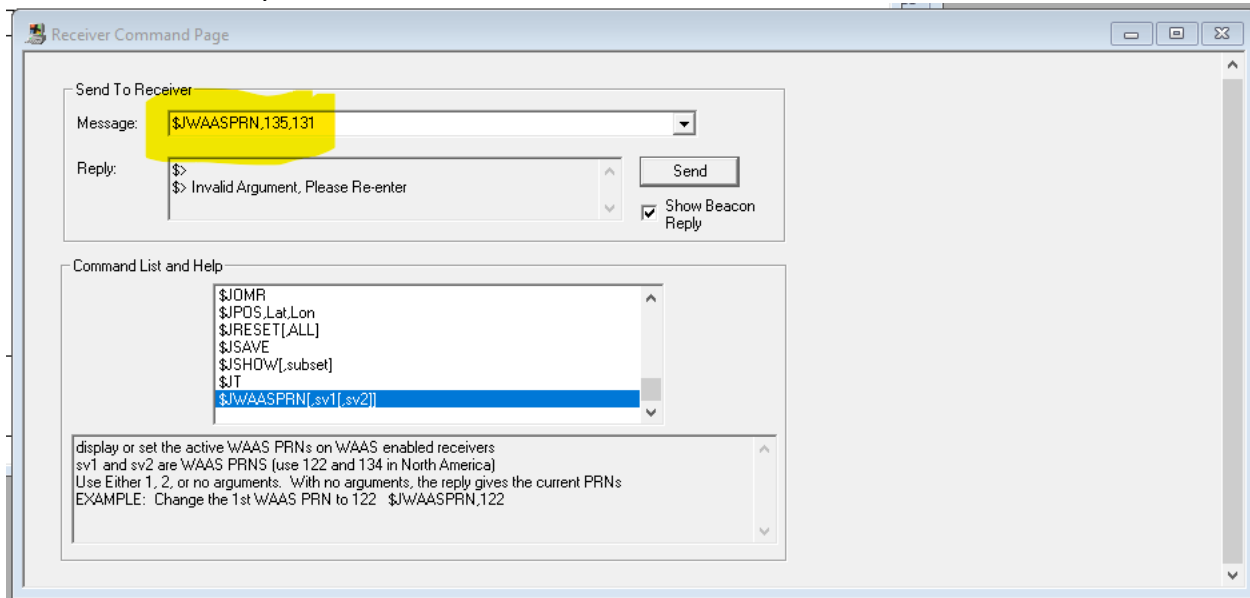
- Next, click on Command Window icon.



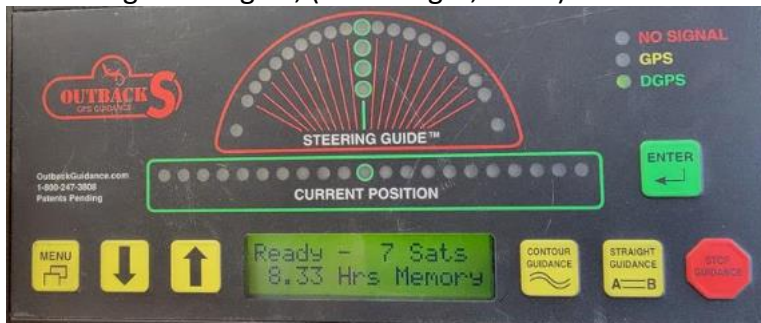
- From the command drop down list choose \$JWAASPRN[,sv1[,sv2]] (Last item)



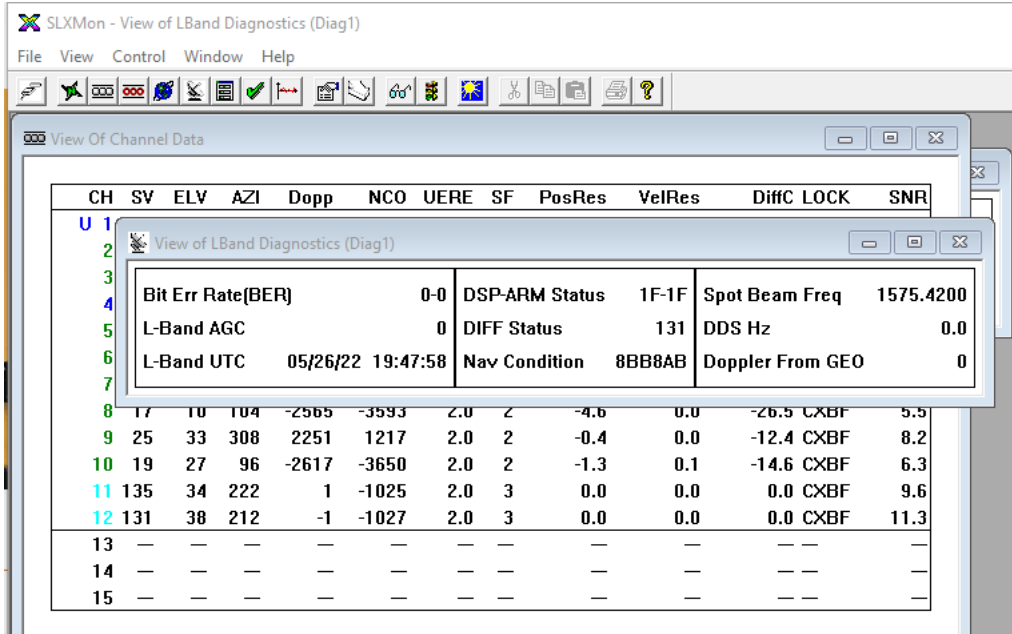
- Double click on this to move to the command box, rewrite the message to: \$JWAASPRN,135,131 or whatever PRN Sats you wish for the area.



- After message is rewritten select show beacon reply, then click send, after a few seconds to a minute the S should get full signal, (Green Light, DGPS)



- Click on View L Band icon, your selected differential satellite should appear under Diff Status.



The screenshot shows the SLXMon software interface. The main window is titled "View Of Channel Data" and contains a table with columns: CH, SV, ELV, AZI, Dopp, NCO, UERE, SF, PosRes, VelRes, DiffC, LOCK, and SNR. A secondary window titled "View of LBand Diagnostics (Diag1)" is overlaid on top, displaying various diagnostic parameters.

CH	SV	ELV	AZI	Dopp	NCO	UERE	SF	PosRes	VelRes	DiffC	LOCK	SNR
U 1												
2												
3												
4												
5												
6												
7												
8	17	10	104	-2565	-3593	2.0	2	-4.6	0.0	-26.5	CXBF	5.5
9	25	33	308	2251	1217	2.0	2	-0.4	0.0	-12.4	CXBF	8.2
10	19	27	96	-2617	-3650	2.0	2	-1.3	0.1	-14.6	CXBF	6.3
11	135	34	222	1	-1025	2.0	3	0.0	0.0	0.0	CXBF	9.6
12	131	38	212	-1	-1027	2.0	3	0.0	0.0	0.0	CXBF	11.3
13	-	-	-	-	-	-	-	-	-	-	-	-
14	-	-	-	-	-	-	-	-	-	-	-	-
15	-	-	-	-	-	-	-	-	-	-	-	-

Parameter	Value	Parameter	Value	Parameter	Value
Bit Err Rate(BER)	0-0	DSP-ARM Status	1F-1F	Spot Beam Freq	1575.4200
L-Band AGC	0	DIFF Status	131	DDS Hz	0.0
L-Band UTC	05/26/22 19:47:58	Nav Condition	8BB8AB	Doppler From GEO	0